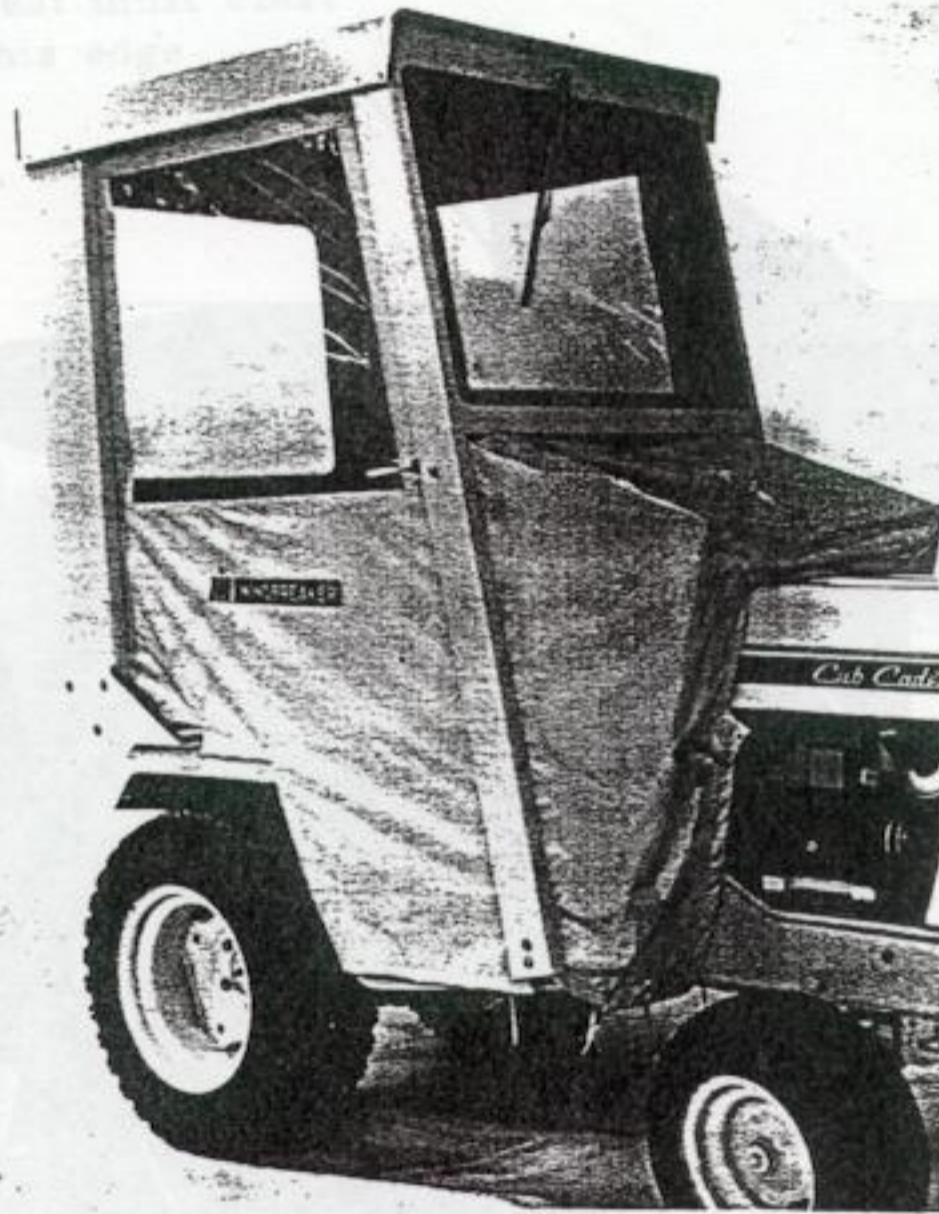


Faint, illegible text at the top of the page, possibly bleed-through from the reverse side.

NOTE: Lat washers must be placed over all tie bolts.

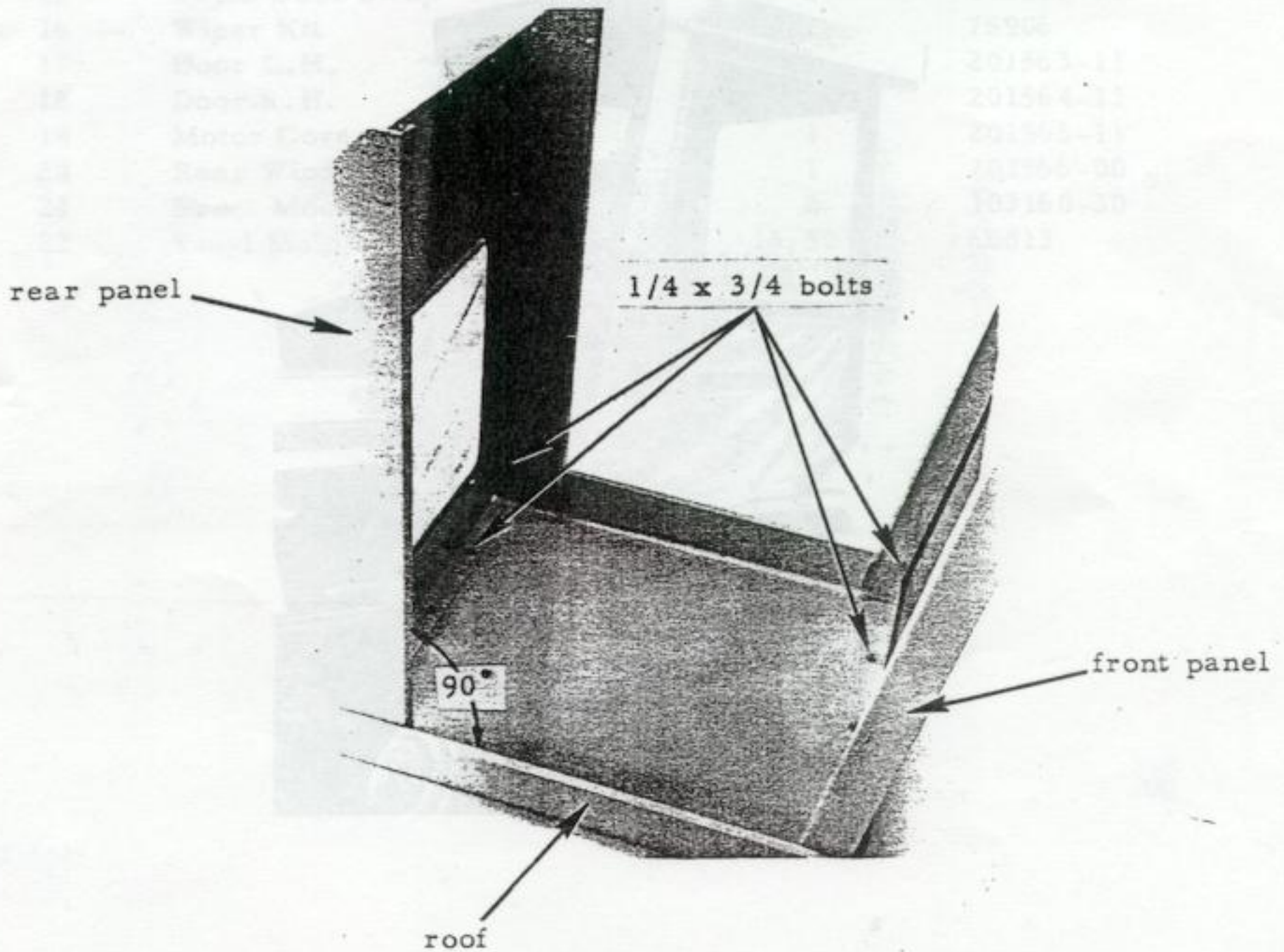
# DELUX CAB

No. 407 379 R1

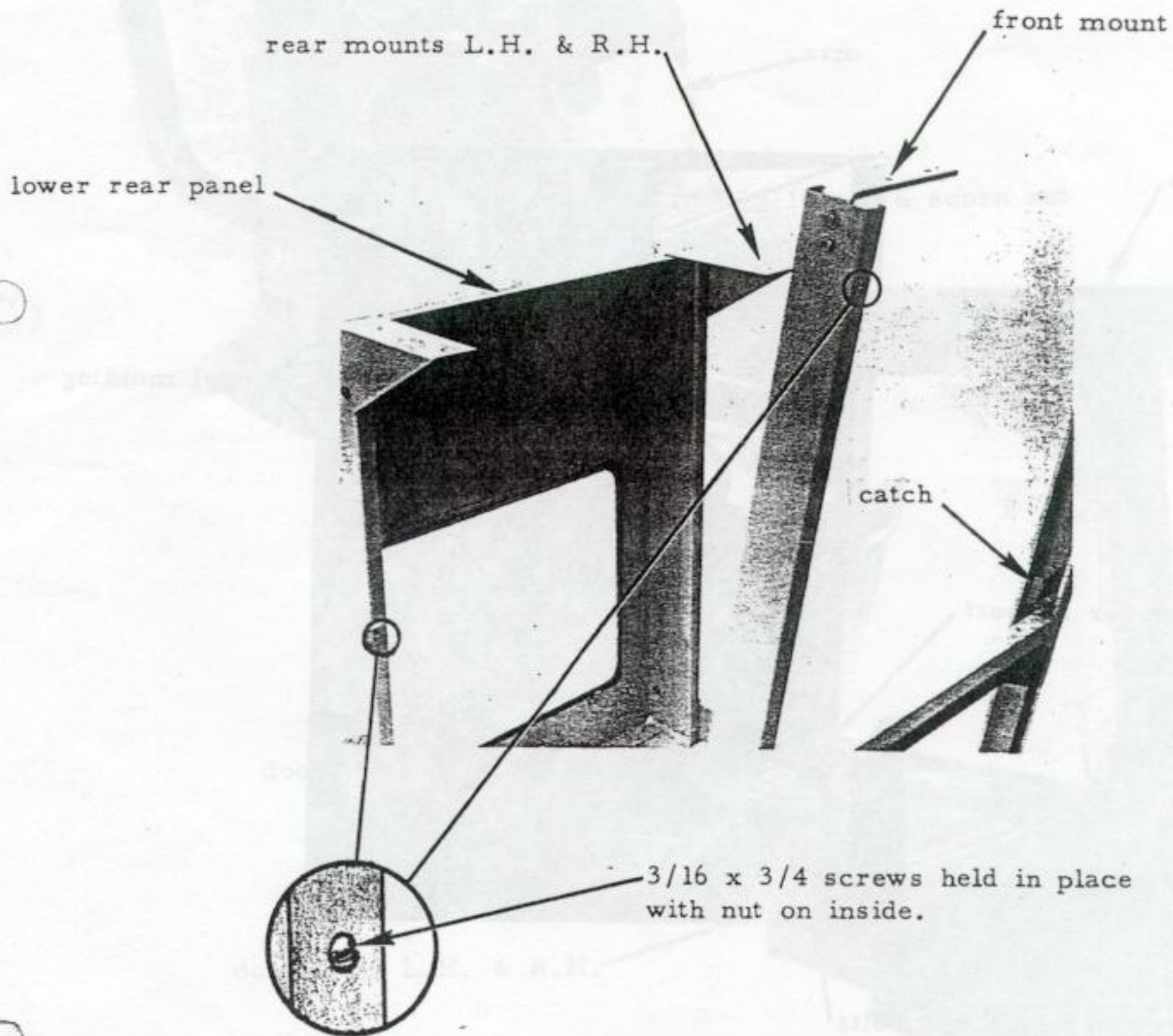


1. Fasten front and rear panels to roof using 1/4 x 3/4 hex head bolts, flat washers, lockwashers and nuts. Fully tighten rear panel after squaring it with roof, hand tighten front panel.

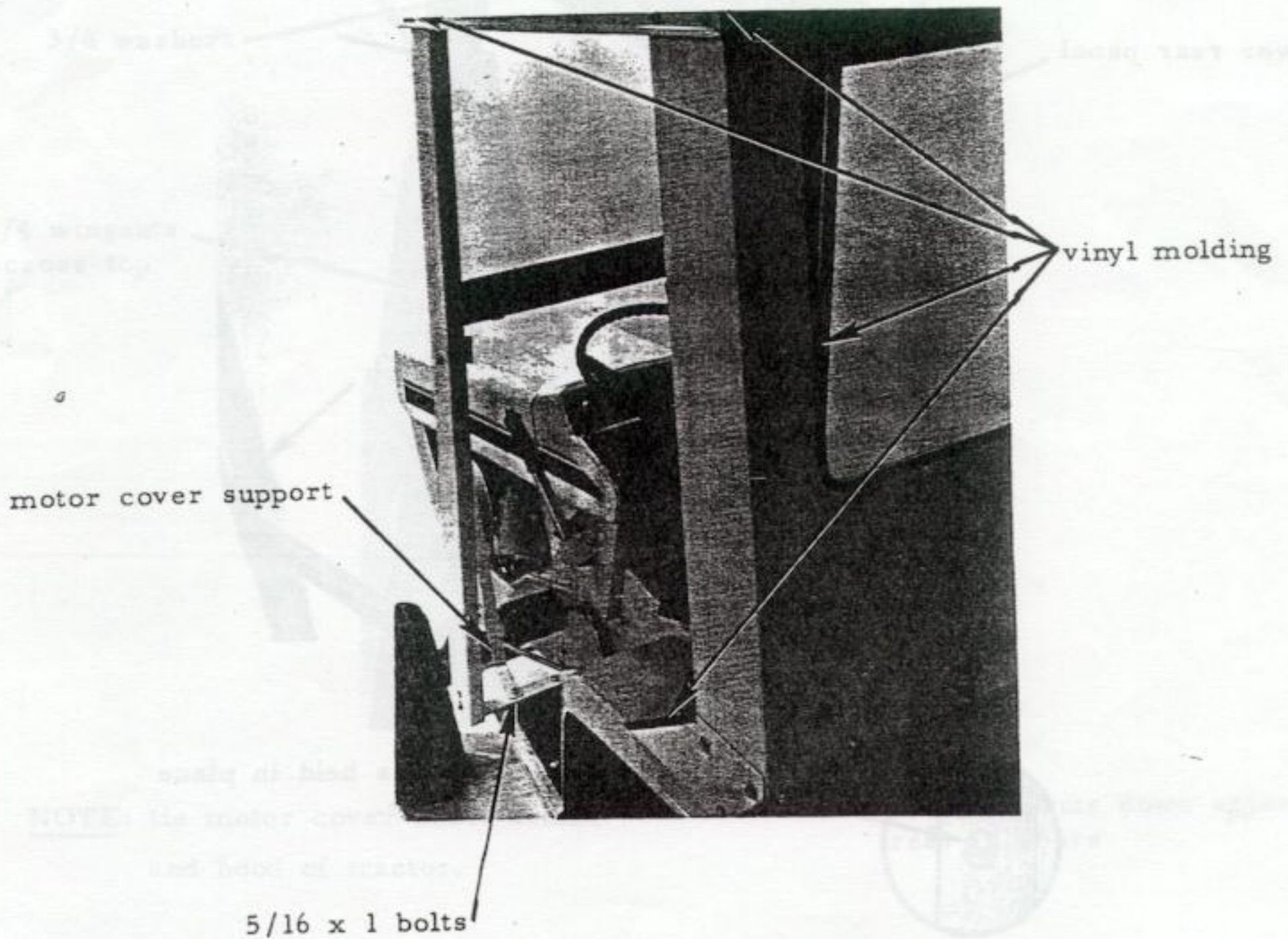
NOTE: flat washers must be placed over all slotted holes.



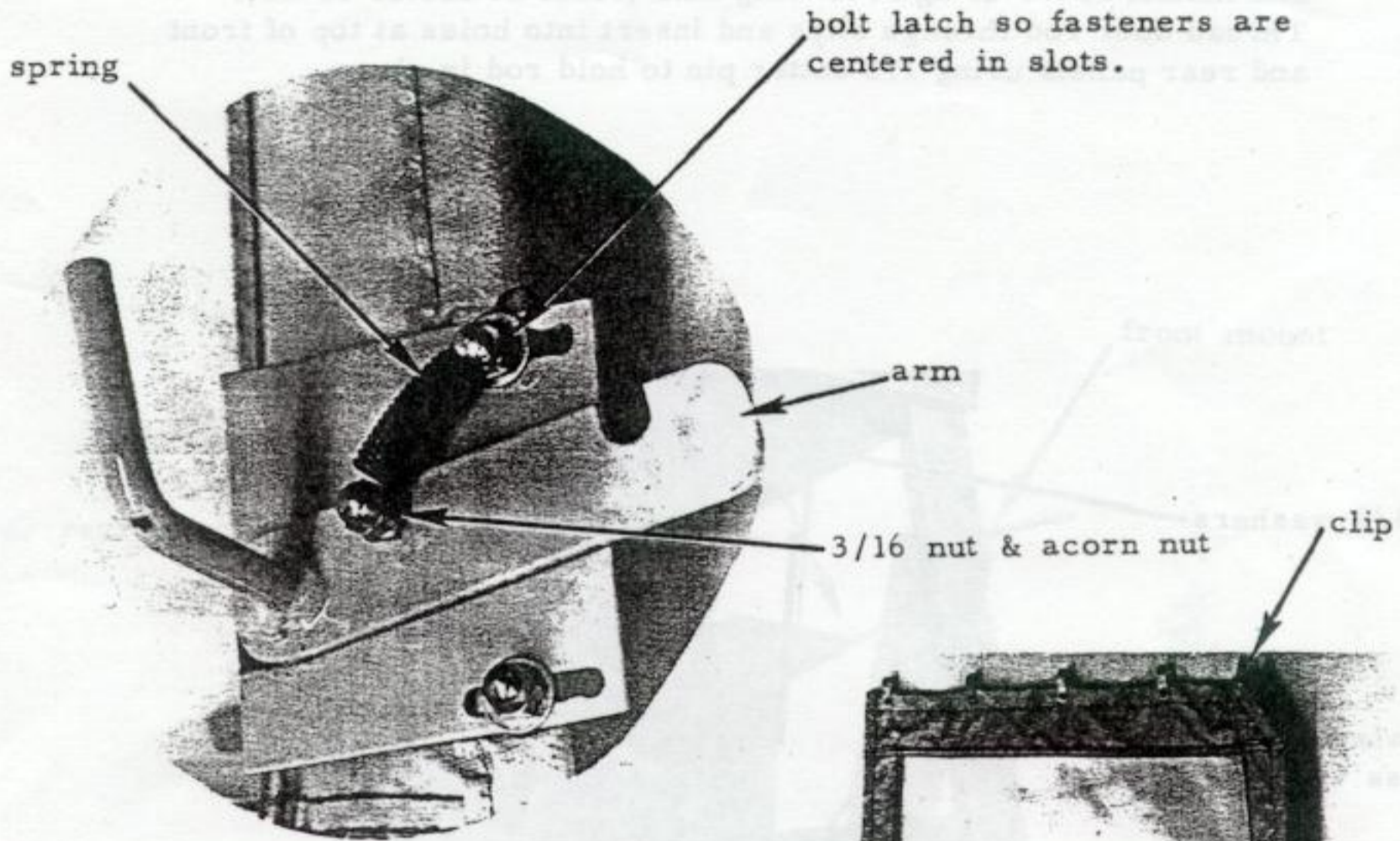
2. Attach catches, lower rear panel, front mounts and rear mounts L.H. & R.H. using  $1/4 \times 3/4$  hex head bolts, flat washers, lock-washers and nuts. Insert  $3/16 \times 3/4$  screws into hole in front edges of rear and front panels, fasten into position using  $3/16$  nuts.



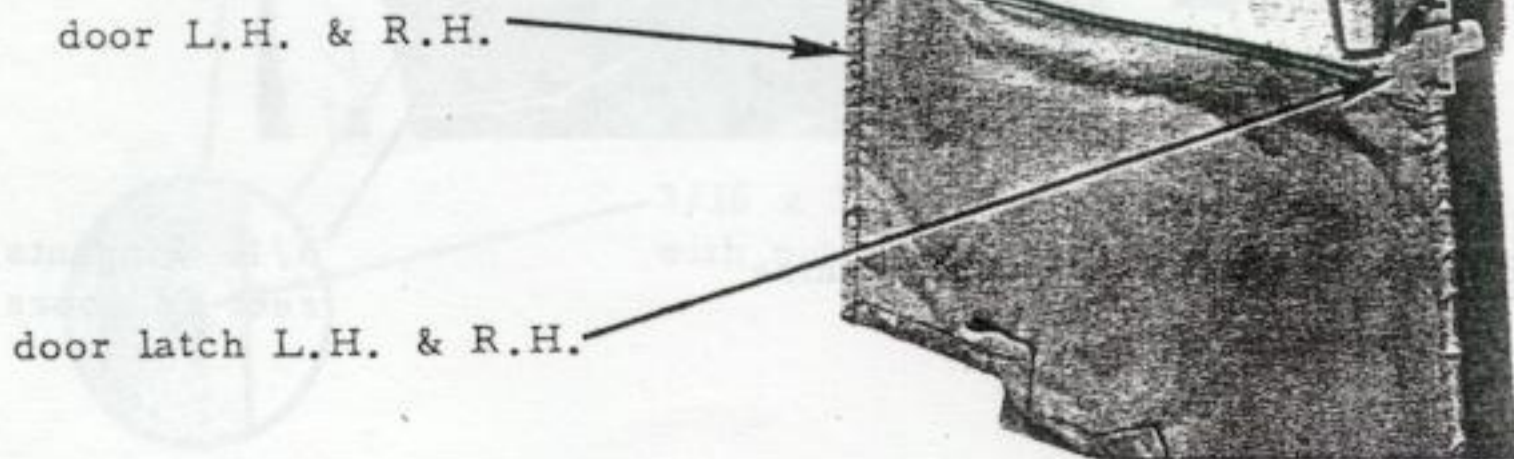
3. Remove slotted screws from front of foot rests. Position cab on tractor and fasten front mounts to foot rests with motor cover supports in position using 5/16 x 1 hex head bolts, flat washers and lockwashers. Cut vinyl molding to length and glue to front and back edges of roof, rear window opening and rear mounts.



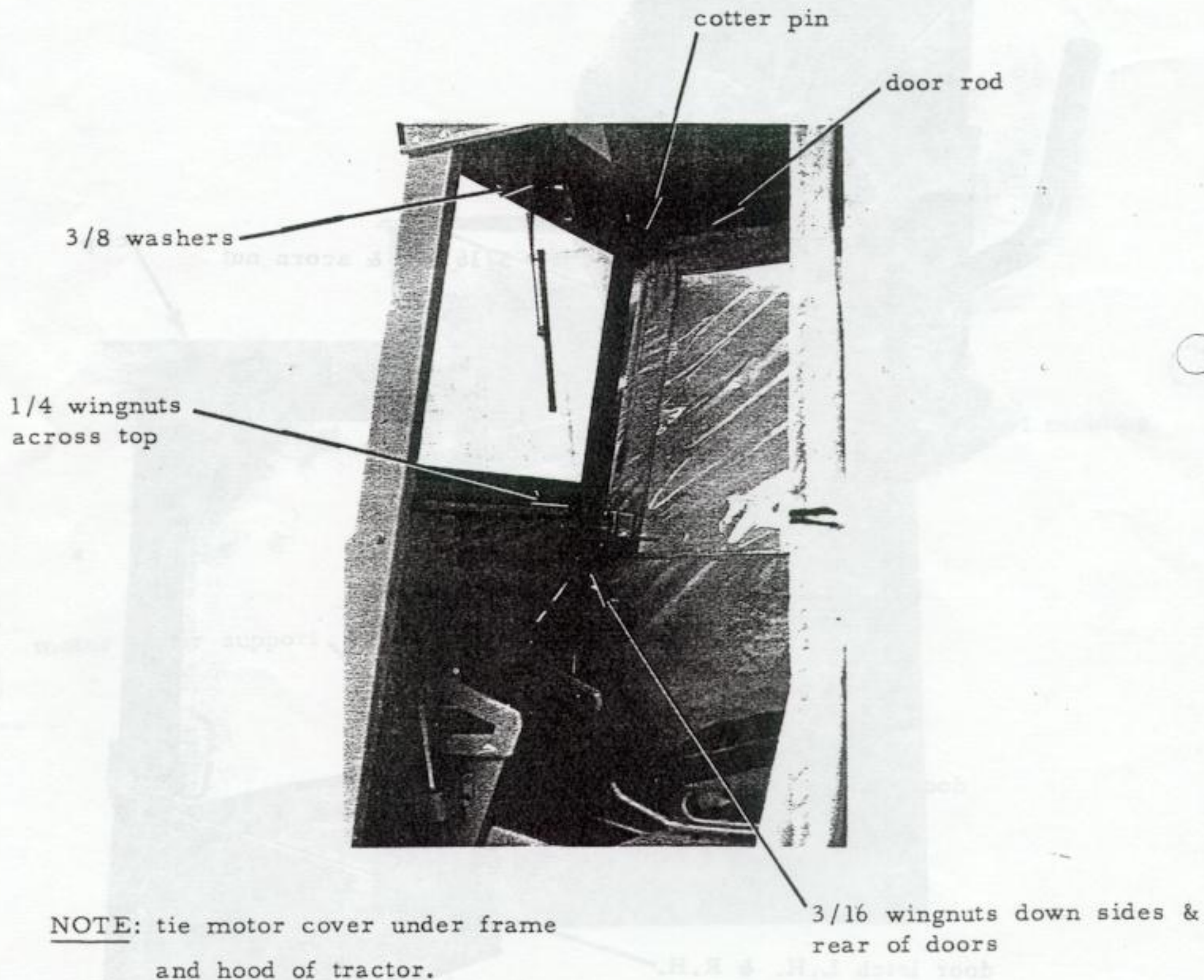
4. Insert 3/16 x 1/2 screw into hole in arm of door latches and fasten with 3/16 nut. Insert bent strap into front hem of doors. Bolt door latches to bent strap using 3/16 x 1/2 screws, 3/16 flat washers and acorn nuts with spring in position as shown. Bolt clips to doors using 3/16 x 1/2 screws and 3/16 nuts.



INSIDE VIEW OF  
LEFT HAND DOOR

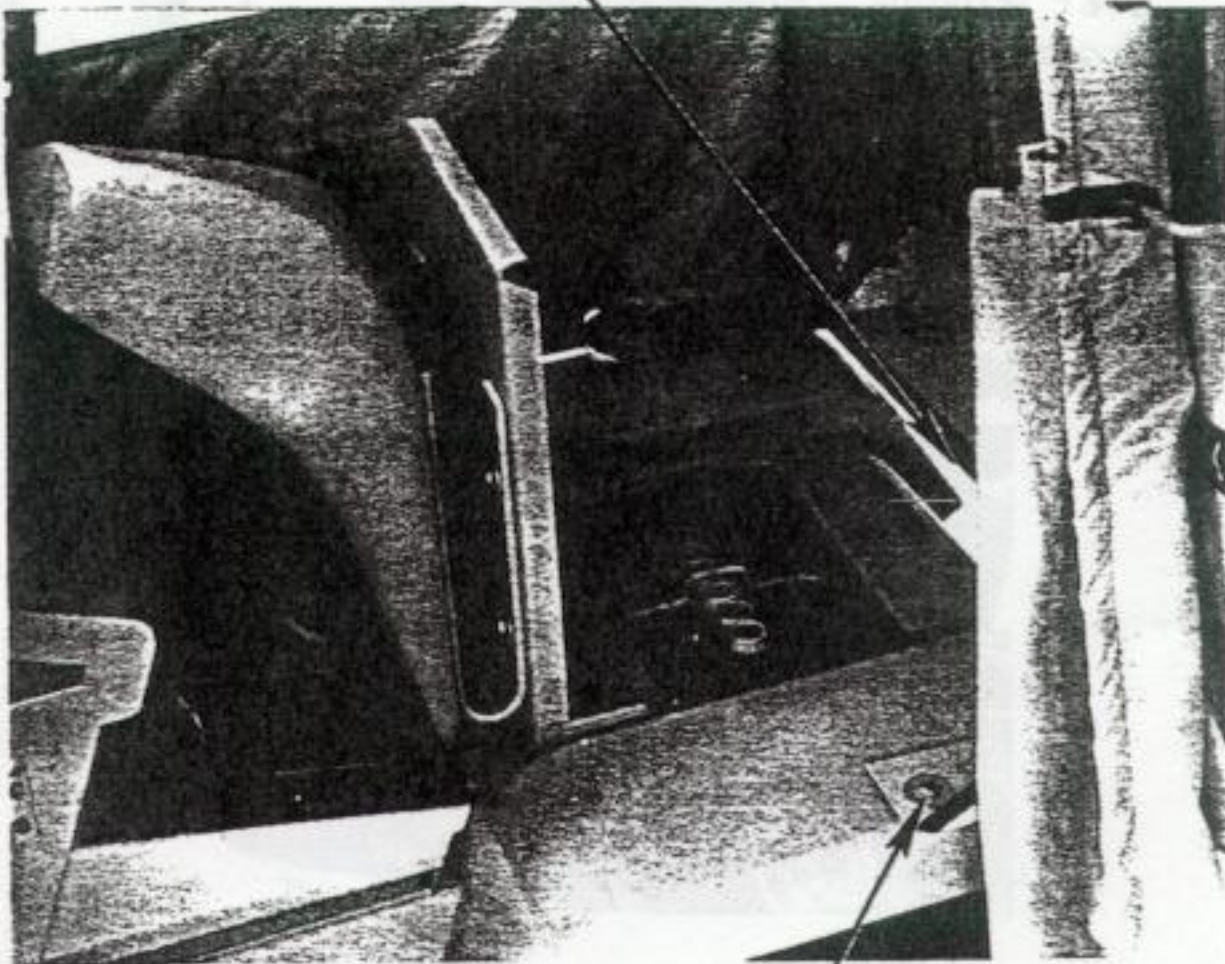


5. Install windshield wiper with (three) 3/8 washers on inside. Insert top and side straps into motor cover and install using 3/16 wingnuts along sides. Motor cover is fastened to front inside surface of posts. Fasten top of motor cover supports to front panel using 1/4 x 1 hex head bolts, lockwashers and nuts. Fasten top of motor cover to these bolts with 1/4 wing nuts. Insert rear strap into door and install doors using 3/16 wing nuts (same as motor cover). Thread door rod through clips and insert into holes at top of front and rear panels using 1/8 cotter pin to hold rod in place.



6. Close doors and pull rear panel back until slack is taken up in doors. (Check clearance between rear panel and seat by tilting seat.) Back drill 9/32 diameter (.281) holes in fenders through rear mounts. Use 1/4 x 1 hex head bolts, largewashers, flat washers, lockwashers and nuts.

seat must clear  
this edge



1/4 x 1 bolts

Item No.	Part Description	No. Used	Part No.
1	Motor Cover Support	2	103159-01
2	Front Panel	1	201711-30
3	Rear Panel	1	201686-30
4	Roof	1	103060-30
5	Lower Rear Panel	1	103063-30
6	Door Rod	2	103071-01
7	Rear Mount L.H.	1	103061-30
8	Rear Mount R.H.	1	103062-30
9	Door Catch	2	103081-01
10	Door Latch L.H.	1	201689-30
11	Door Latch R.H.	1	201690-30
12	Motor Cover Top Strap	1	103138-01
13	Motor Cover Side Strap	2	103139-01
14	Rear Door Strap	2	103072-01
15	Front Door Strap	2	103073-01
16	Wiper Kit	1	75906
17	Door L.H.	1	201563-11
18	Door R.H.	1	201564-11
19	Motor Cover	1	201565-11
20	Rear Window	1	201566-00
21	Front Mount	2	103160-30
22	Vinyl Molding	15.50 Ft.	60813