

IH CUB CADET DUAL SPACERS
 DIMENSIONS TAKEN FROM IH-MADE PART
 WYATT COMPTON 20010713

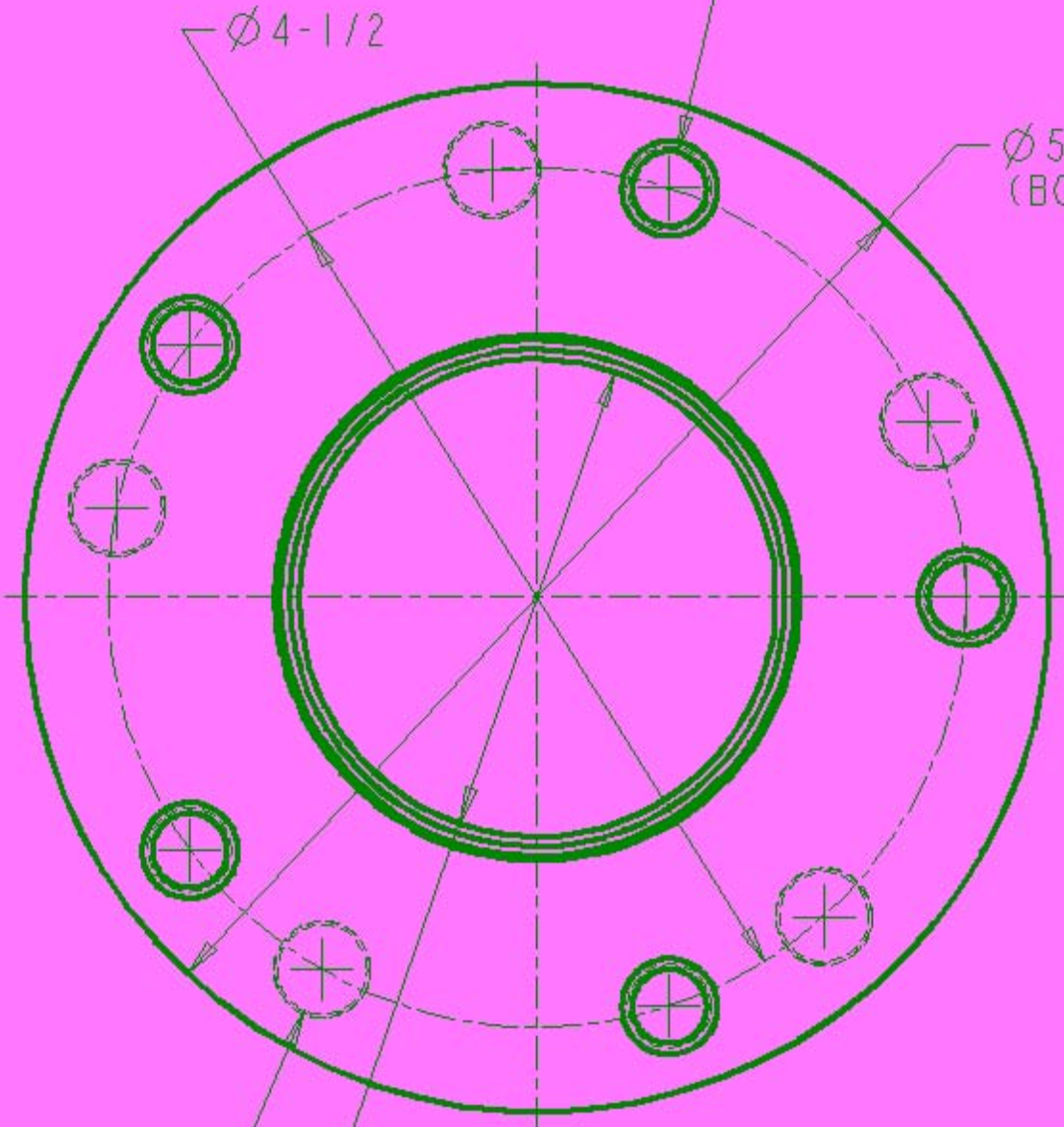
5 HOLES EQUALLY SPACED
✓ $\varnothing 0.50 \times 90^\circ$ BOTH SIDE
7/16UNF THRU THREAD
ORIENTATION NOT IMPORTANT

$\varnothing 4\text{-}1/2$

$\varnothing 5\text{-}3/8$
(BOTH FLANGES)

$\varnothing 2\text{-}1/2 \times 1/8$ WALL

5 X $\varnothing 15/32$ HOLES EQUALLY SPACED
✓ $\varnothing 0.50 \times 90^\circ$ BOTH SIDES
ORIENTATION NOT IMPORTANT



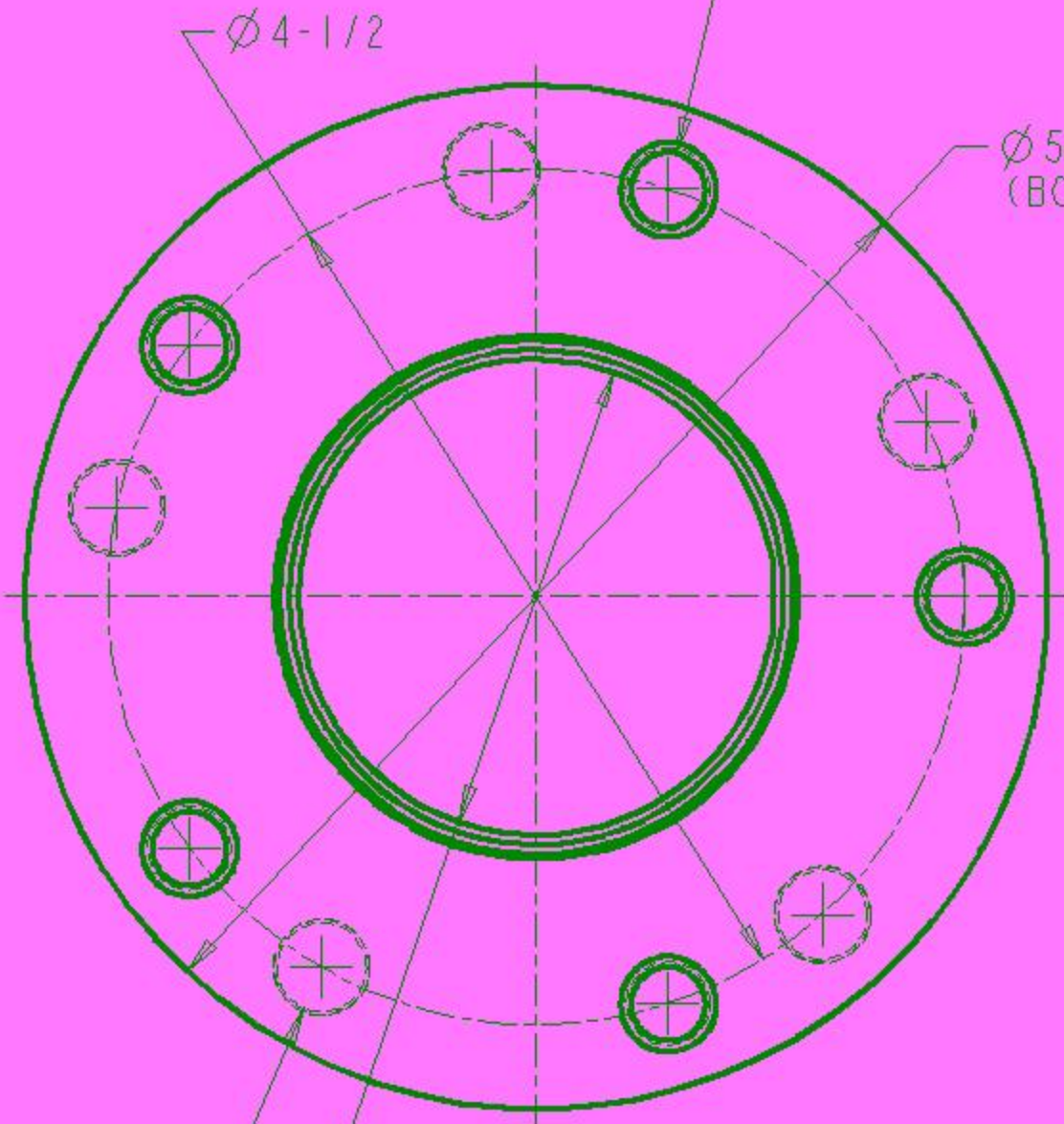
5 HOLES EQUALLY SPACED
✓ $\varnothing 0.50 \times 90^\circ$ BOTH SIDE
7/16UNF THRU THREAD
ORIENTATION NOT IMPORTANT

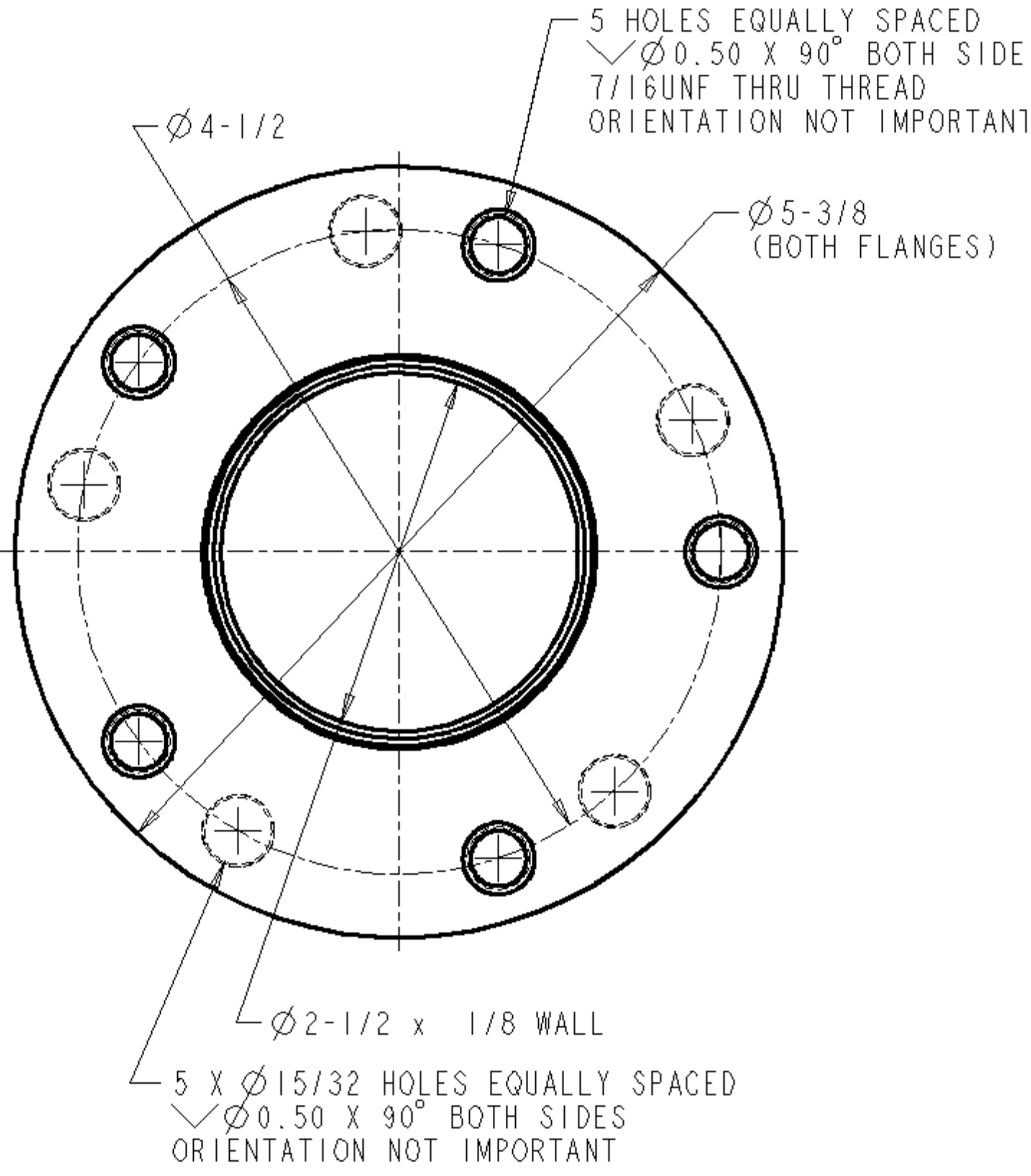
$\varnothing 4-1/2$

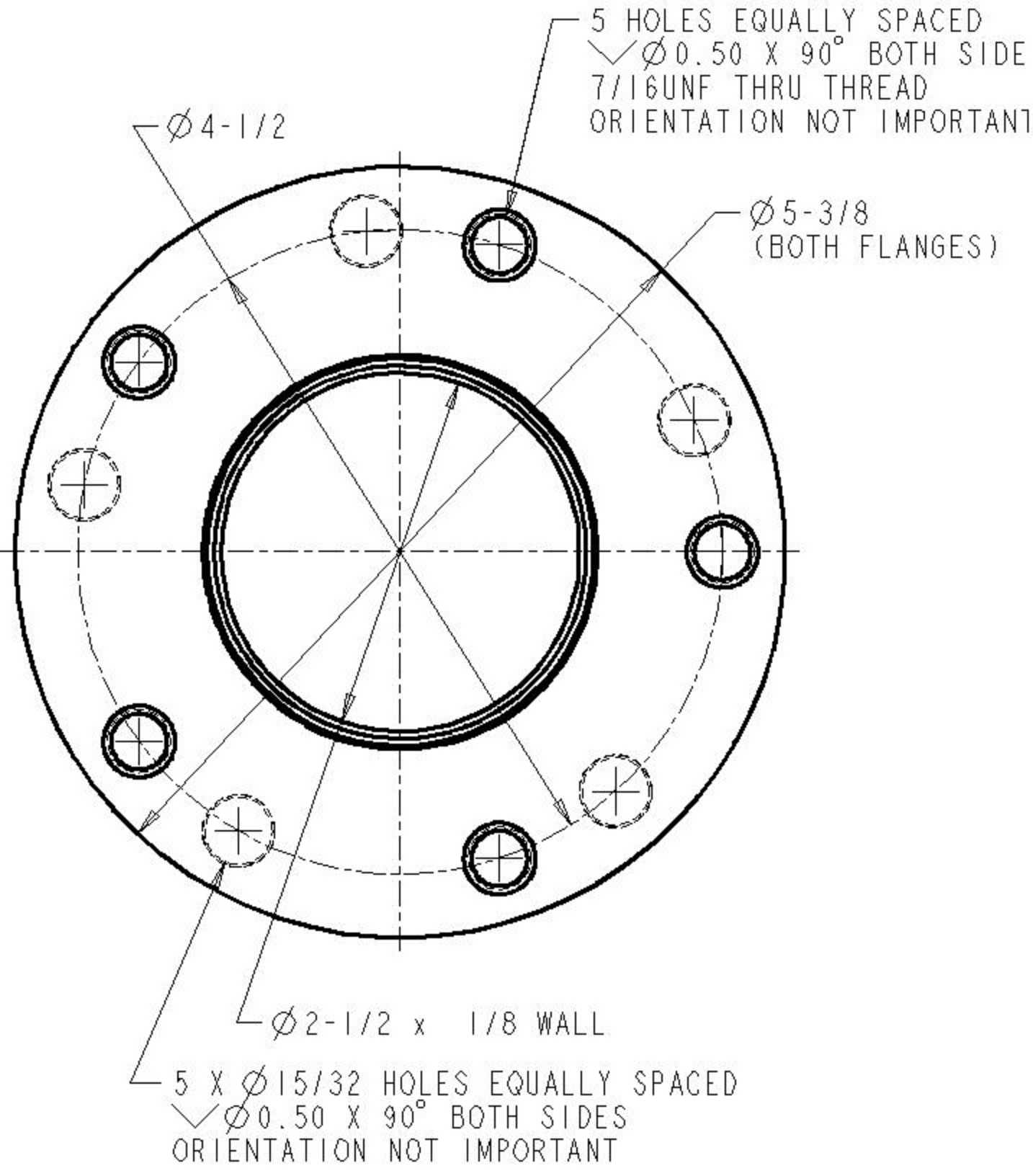
$\varnothing 5-3/8$
(BOTH FLANGES)

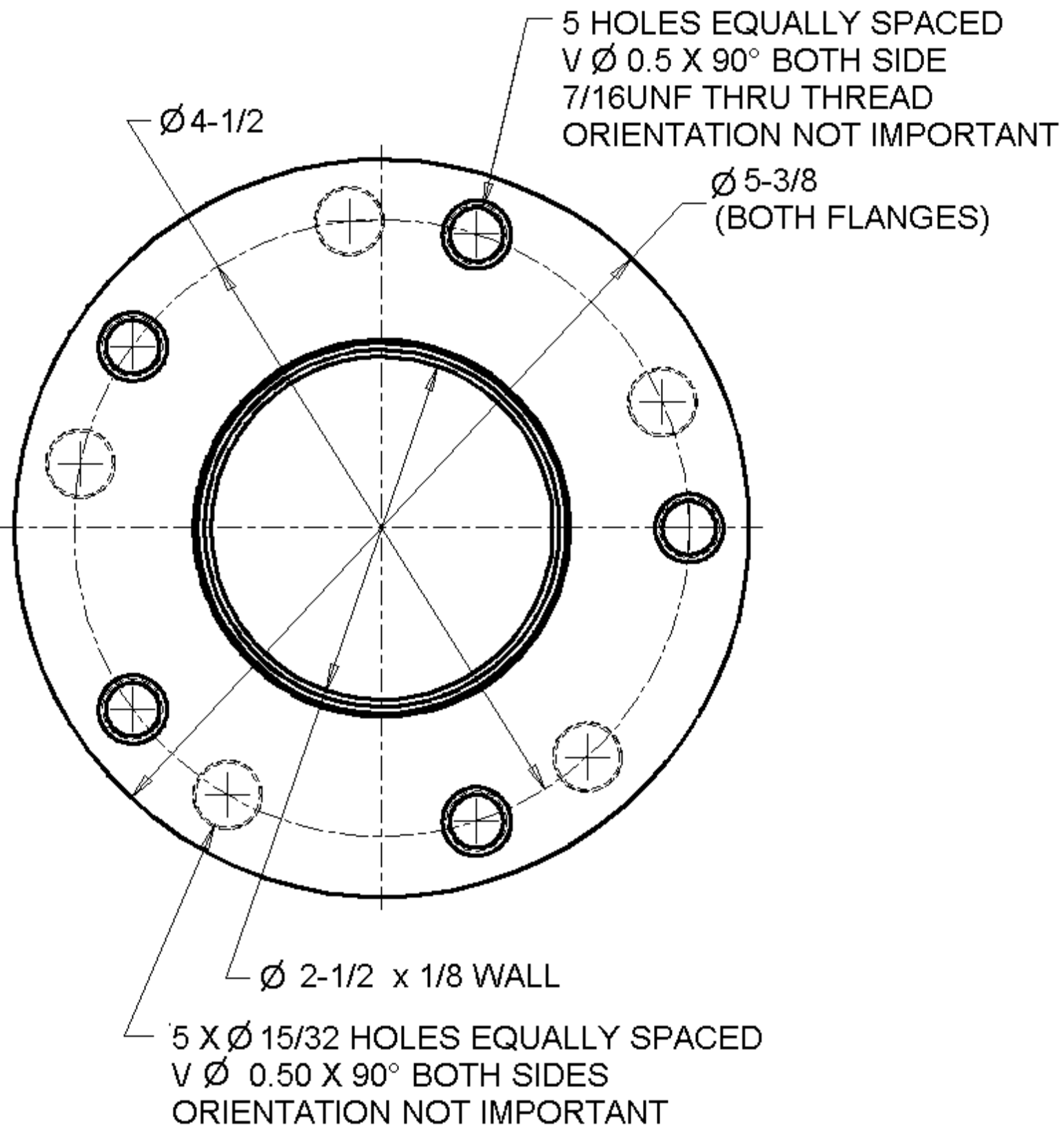
$\varnothing 2-1/2 \times 1/8$ WALL

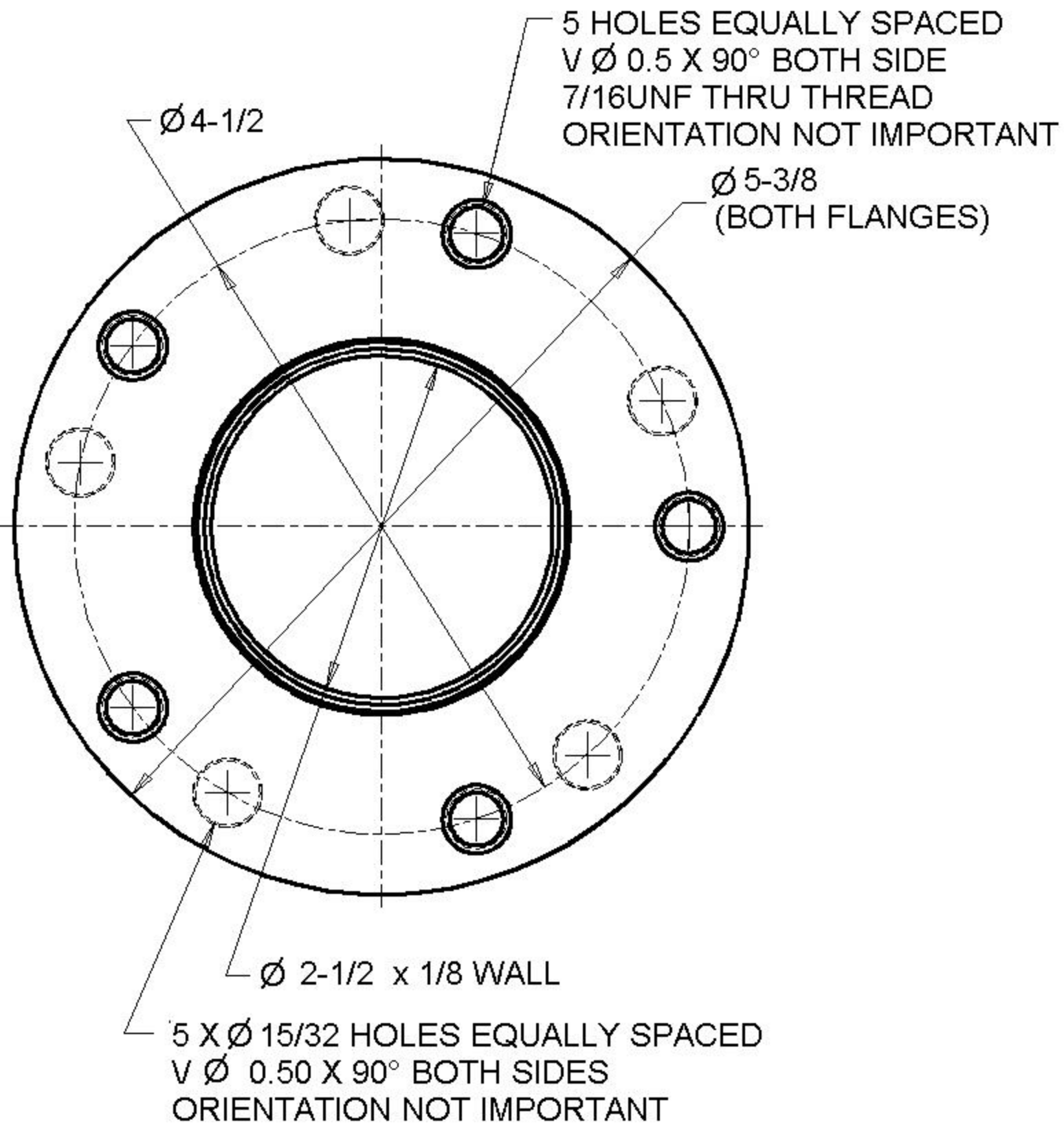
5 X $\varnothing 15/32$ HOLES EQUALLY SPACED
✓ $\varnothing 0.50 \times 90^\circ$ BOTH SIDES
ORIENTATION NOT IMPORTANT

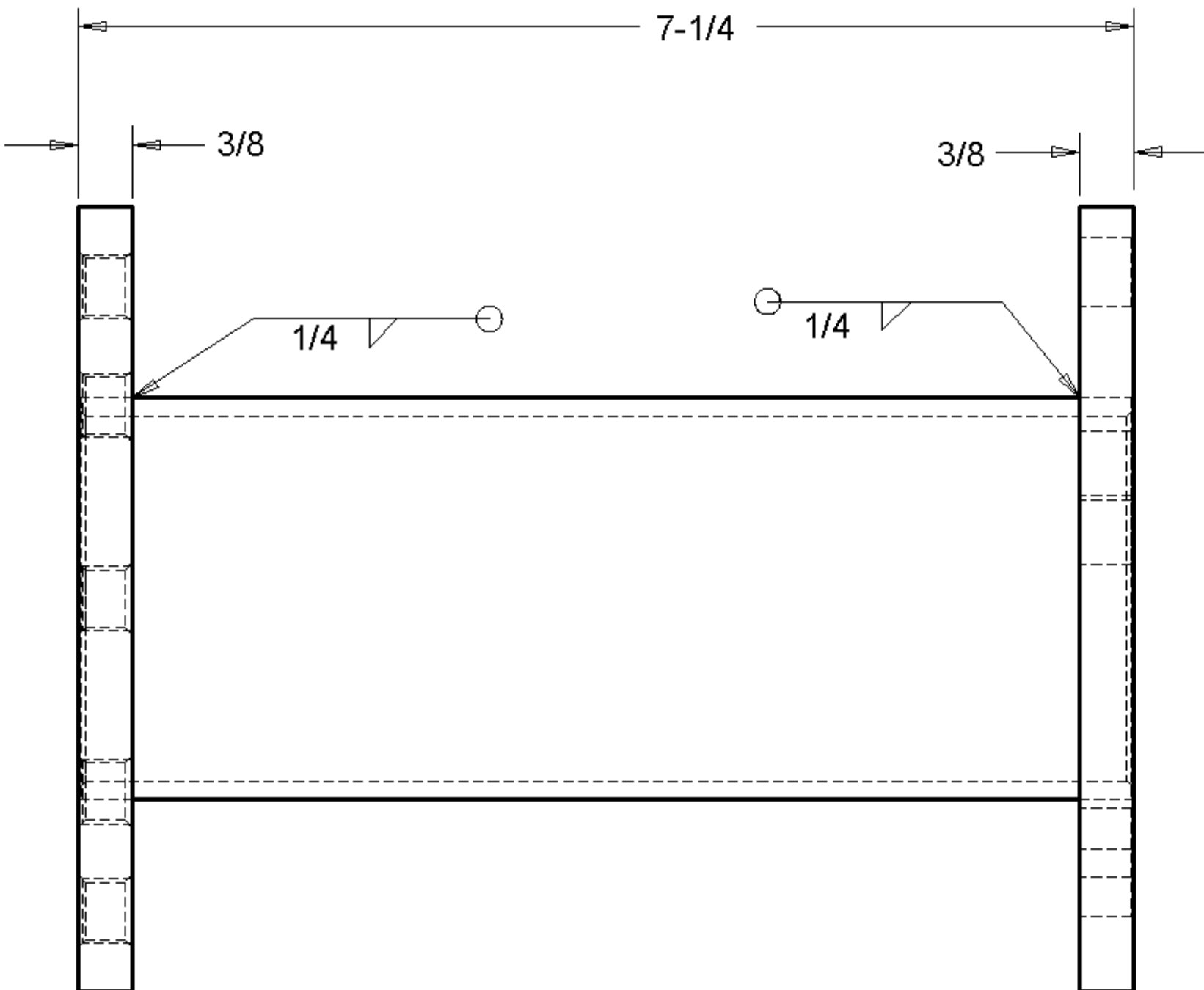








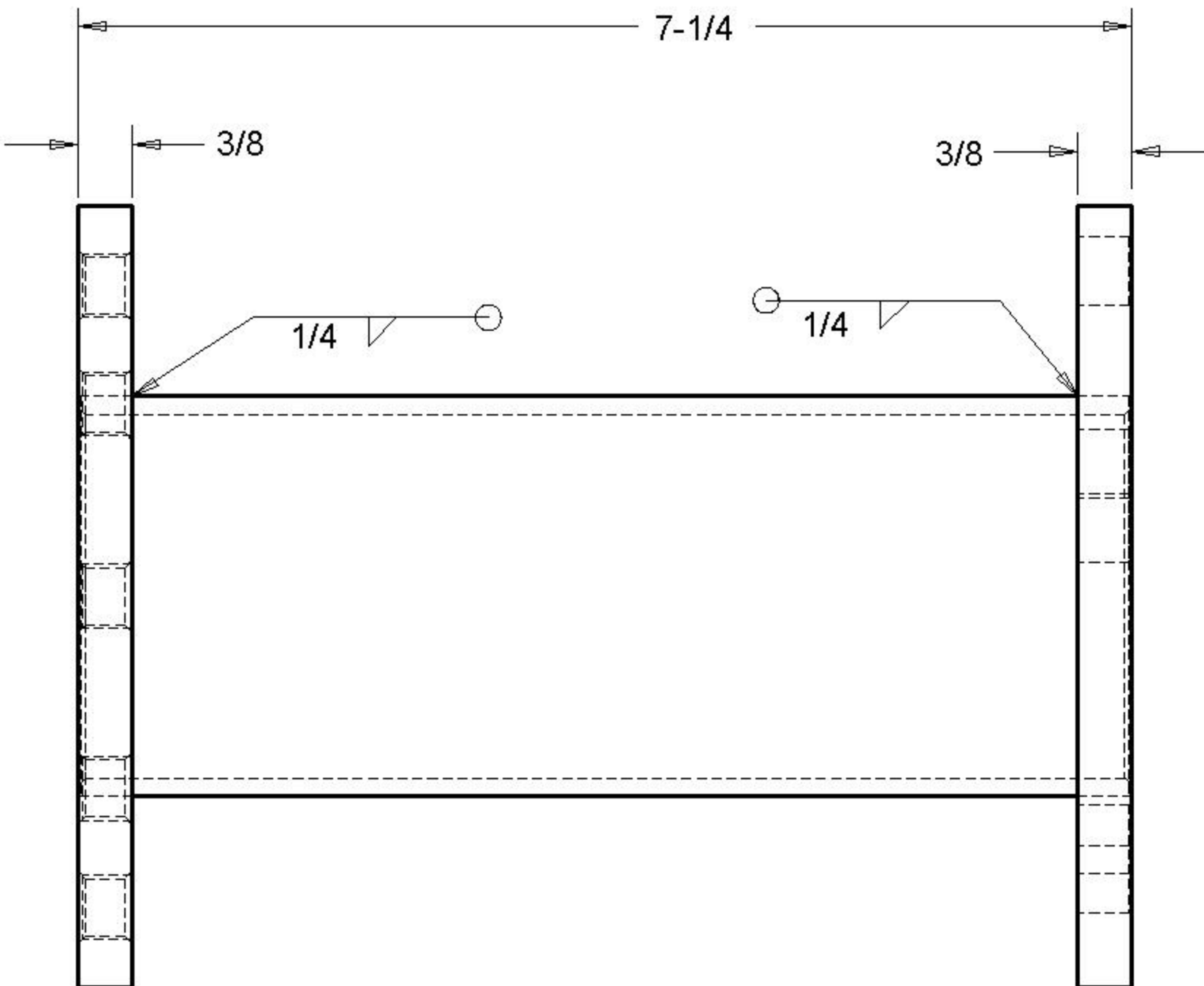




IH CUB CADET DUAL SPACERS

DIMENSIONS TAKEN FROM IH-MADE PART

WYATT COMPTON 20010713



IH CUB CADET DUAL SPACERS

DIMENSIONS TAKEN FROM IH-MADE PART

WYATT COMPTON 20010713