



OPERATOR'S MANUAL

SETTING UP INSTRUCTIONS

**OPERATION
MAINTENANCE
LUBRICATION**

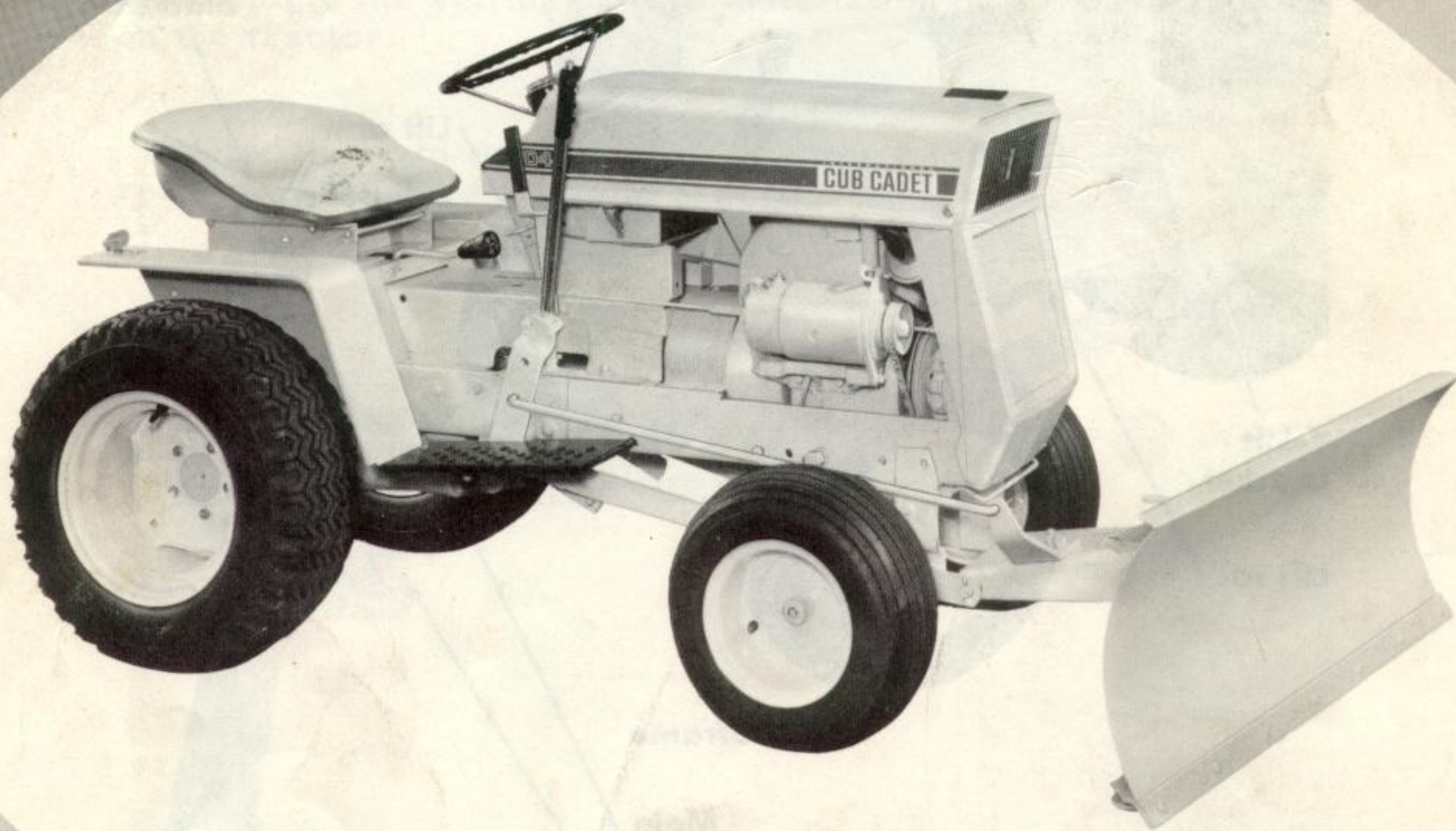
INTERNATIONAL[®]

BLADE

(42-inch)

with

Spring Trip



To The Owner

Your new International Harvester blade is designed to meet today's exacting operating requirements. The ease of operation, and ability to adjust to various conditions lighten your work and shorten your hours on the job.

You are urged to consult your International Harvester dealer concerning unusual conditions or special applications. Let the experience of your dealer and the organization associated with him serve you.

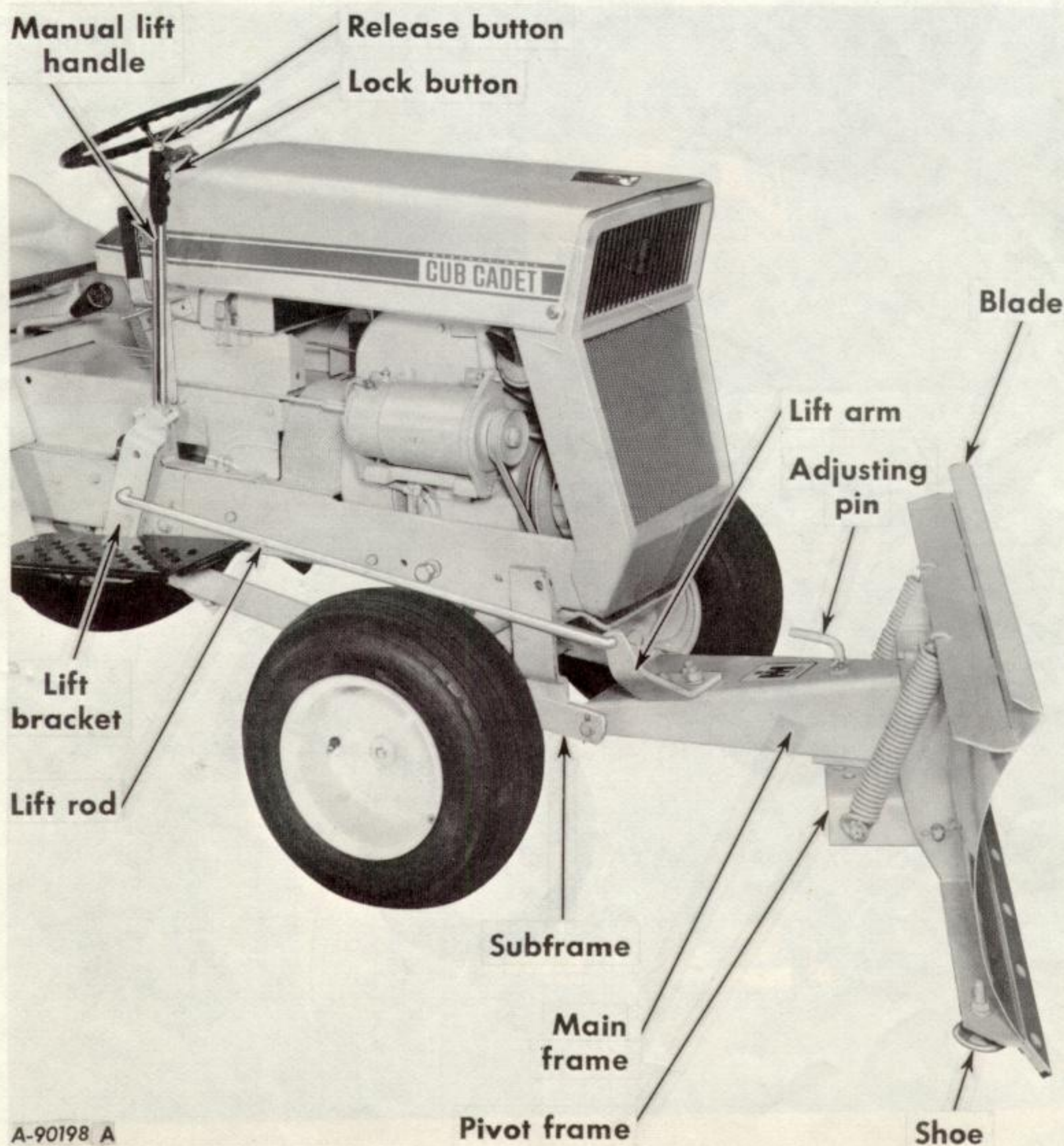
Be sure to read the instructions for Adjusting and Operating in this manual. Check each item referred to and acquaint yourself with the adjustments required to obtain efficient opera-

tion and maximum trouble-free service. Remember, a machine which is properly lubricated and adjusted saves time, labor and fuel.

After the operating season, thoroughly clean your blade and inspect it. Preventive maintenance pays dividends. Your dealer has original-equipment parts which assure proper fit and best performance. He is able to recondition your equipment to a like new condition.

Additional copies of this manual may be ordered from your International Harvester dealer at a nominal price.

INTRODUCTION



Illust. 2

SUPPLEMENT TO OPERATOR'S MANUAL

1 083 177 R2. Rev. 4

INTERNATIONAL® BLADE (42-Inch)

with

Spring Trip

GENERAL

The blade is designed for use on the International Cub Cadet® Tractors for clearing snow, leveling soft dirt or sand, and other lightweight dozer jobs. Operating the blade protects the tractor's front end and prevents damage to the blade's cutting edge.

The information in this supplement applies to the setting-up instructions for the following models of International Cub Cadet® Tractors only:

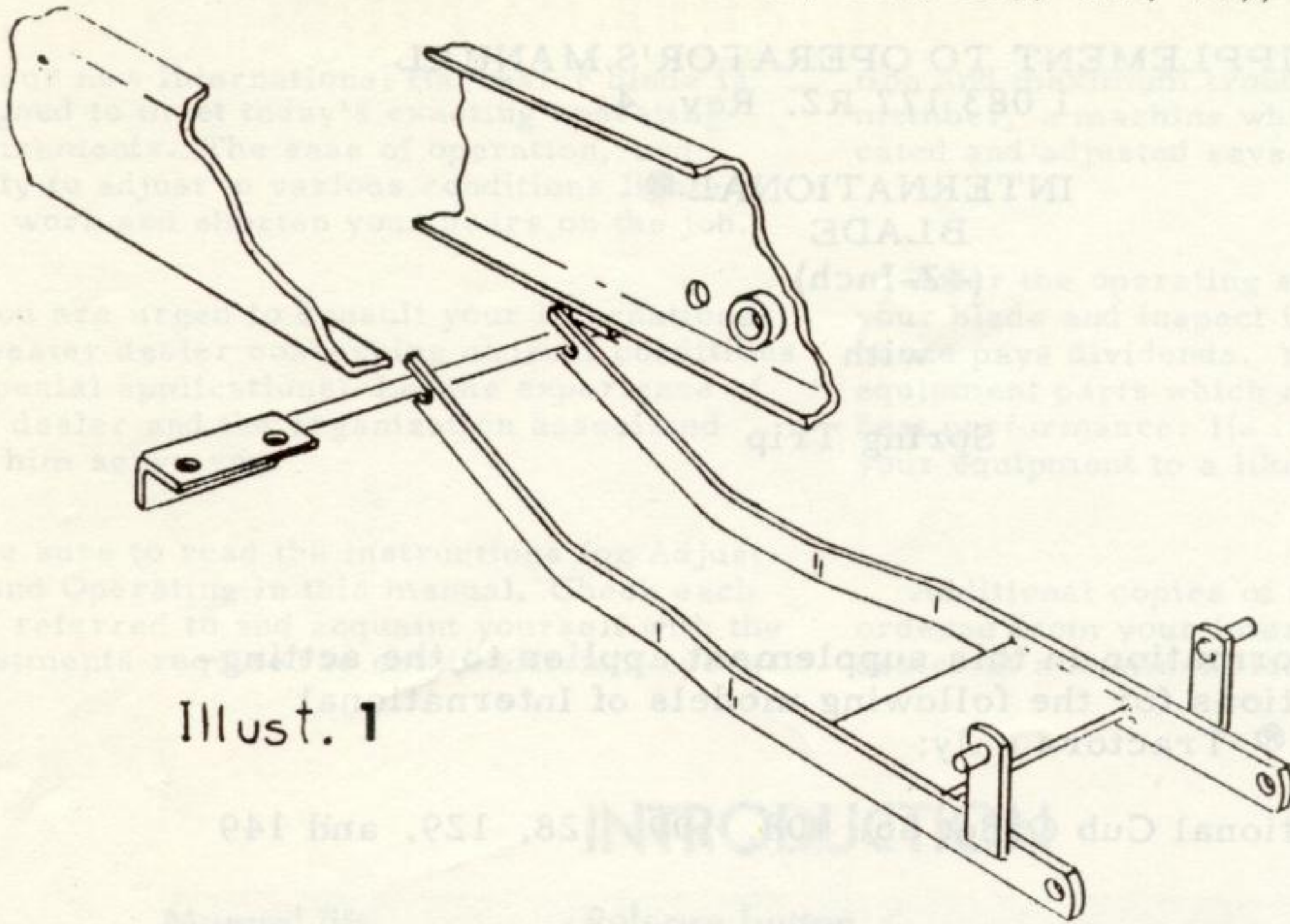
International Cub Cadet 86, 108, 109, 128, 129, and 149

1. Place the slotted ends of the subframe on the foot rest support rod.

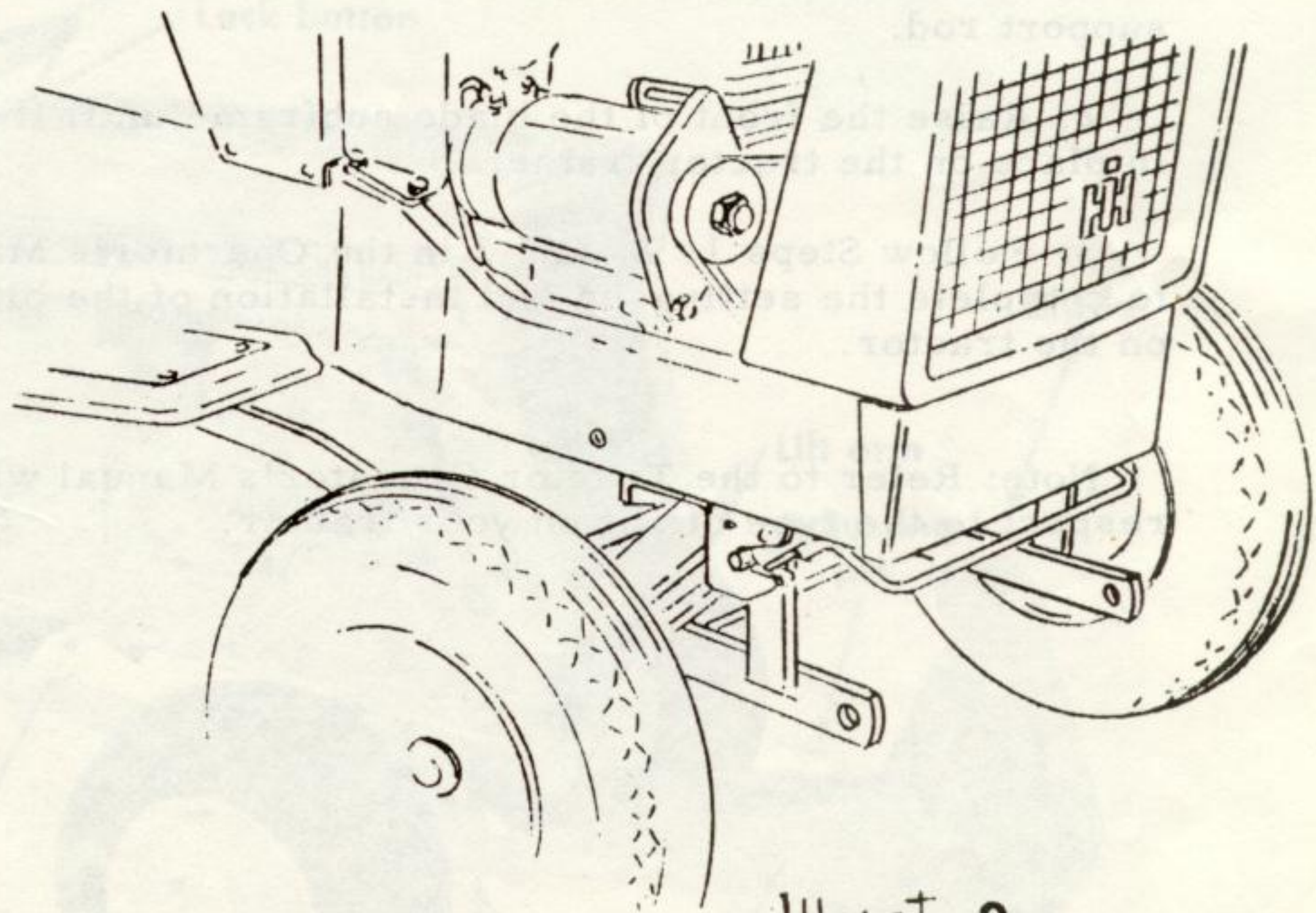
2. Raise the front of the blade subframe until it latches in place on the tractor frame.

3. Follow Steps 1, 2, and 3 in the Operator's Manual to complete the setting-up and installation of the blade on the tractor.

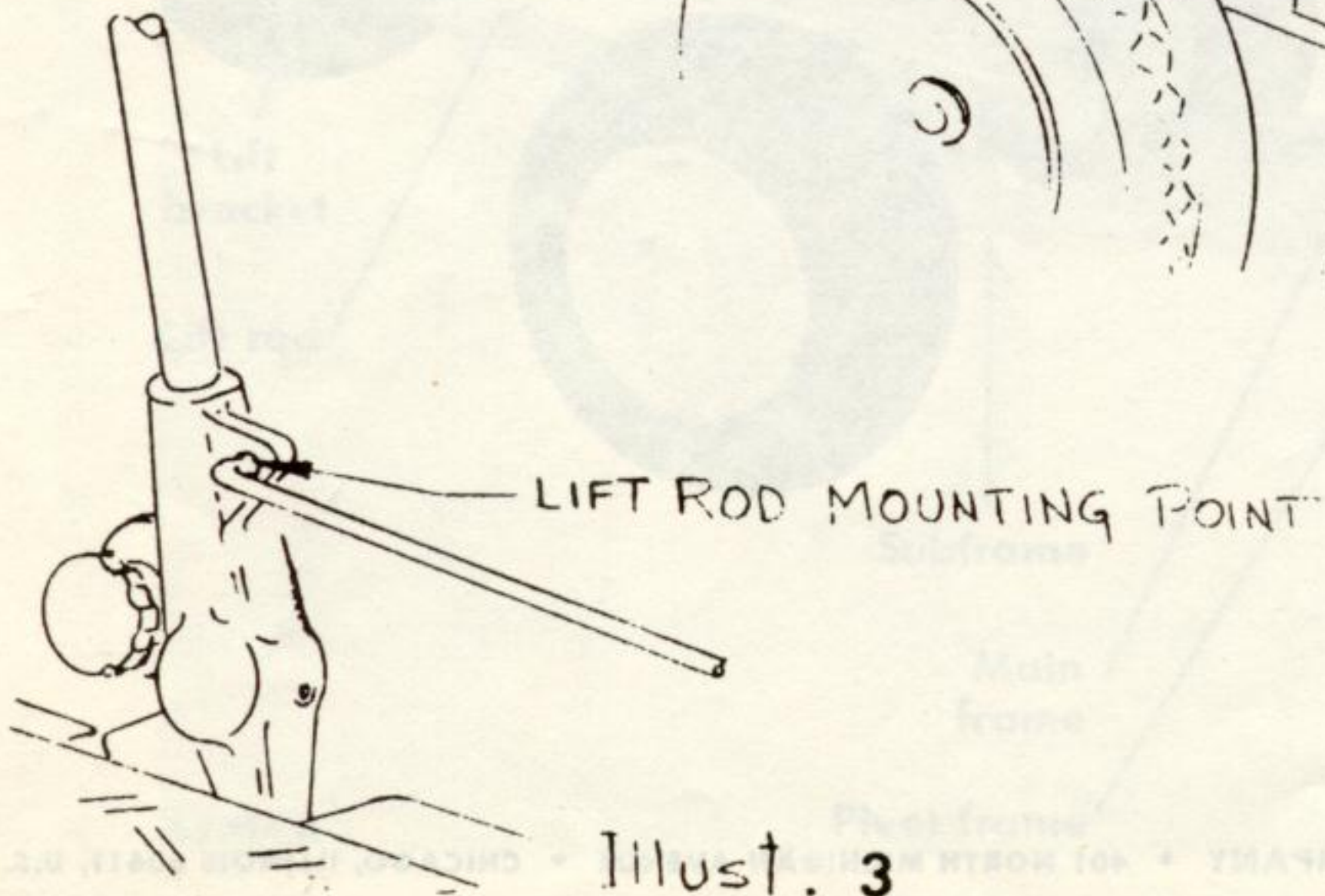
Note: Refer to the Tractor Operator's Manual with respect to the type of lift on your tractor.



Illust. 1



Illust. 2



Illust. 3

OPERATIONAL ADJUSTMENTS

GENERAL

The blade is designed for use on the International Cub Cadet® Tractors for clearing snow, leveling soft dirt or sand, and other lightweight dozer jobs. The spring trip release protects the blade, tractor and operator from severe shock loads when the blade comes in contact with curbs and other obstacles, regardless of speed. The blade has a reversible cutting edge.

Snow Removal Operations: Set the blade in the "free to float" position as follows:

On the 72, 73, 104, 105, 106, 107, 124, 125, 126 and 127 Tractors with manual lift handle, depress the release button on top of the handle, and press in the lock button at the front of the handle. See *Illust. 2*.

To disengage the lift handle from the "Float" position, pull lift handle back slightly and depress top button.

On the Cub Cadet, the 70, 71, 100, 102, 122, and 123 Tractors with manual lift handle, depress the release button and move the wire bail over the top of the button. See *Illust. 2*.

To disengage the lift handle from the "Float" position, pull lift handle back slightly and move wire bail from top of handle.

For tractors having the hydraulic lift unit, or the electric lift, raise the locking clip (*Illust. 8* or *Illust. 9*) up, into the unlocked position.



Illust. 3
Right side of frame shown.

The blade should always be unlocked so that the spring trip release is in operation. See *Illust. 3*.

Adjust the shoes (*Illust. 2*) so that the blade cutting edge clears the pavement.

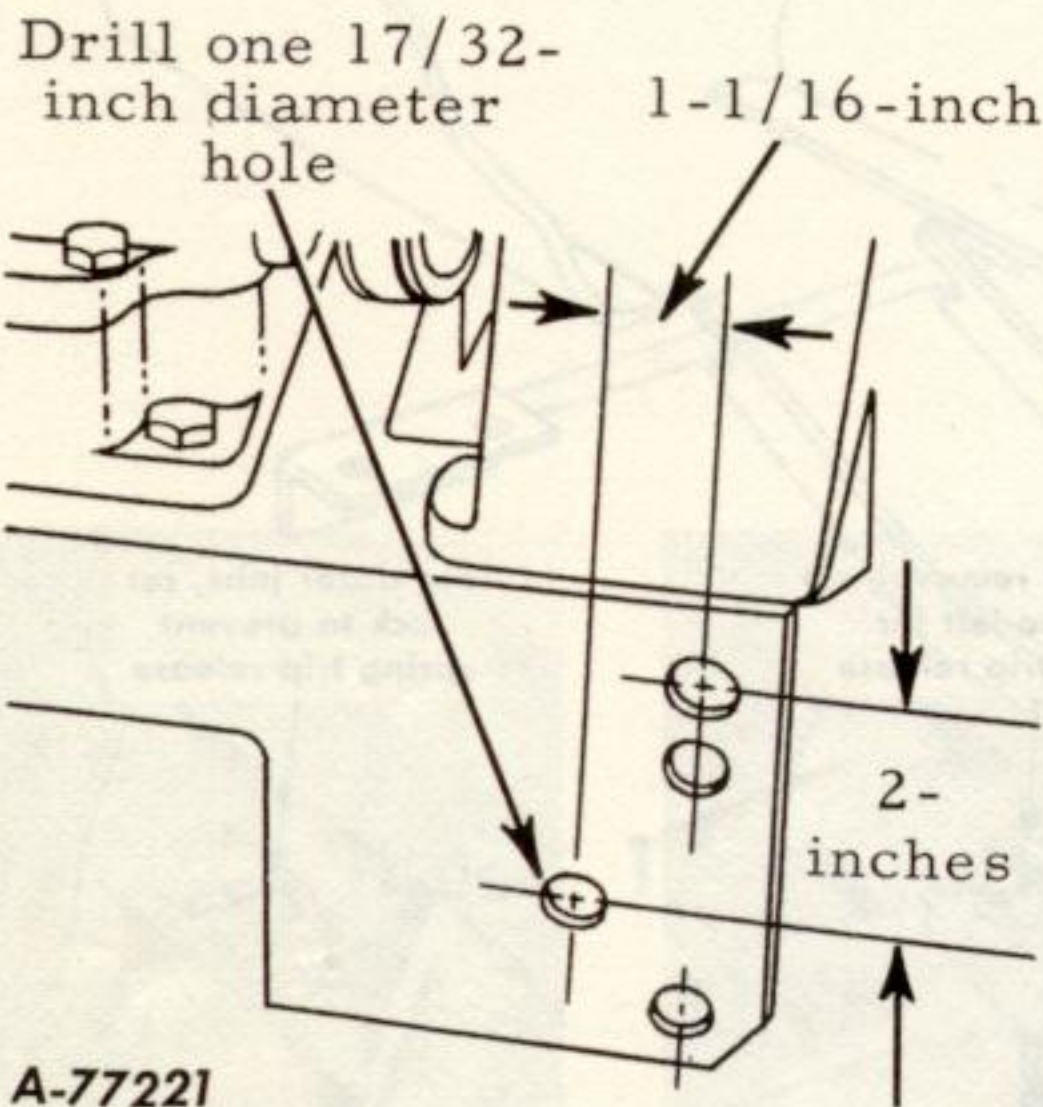
For Grading: The blade may be locked in the stationary position or unlocked for spring trip release.

Caution! Never operate the tractor at high speeds with the blade locked in the stationary position. A collision with a hidden obstacle may damage the blade cutting edge and unseat the driver.

Five Angular Positions: The blade is controlled by the adjusting pin (*Illust. 2*). Raise the pin and angle the blade as desired, then lock in place by lowering the pin.

SETTING UP

TRACTOR MODIFICATION



Illust. 4

To attach the blade subframe to International Cub Cadet Tractors with serial numbers up to and including 65457, drill holes in tractor frame on left and right sides as shown in Illust. 4.

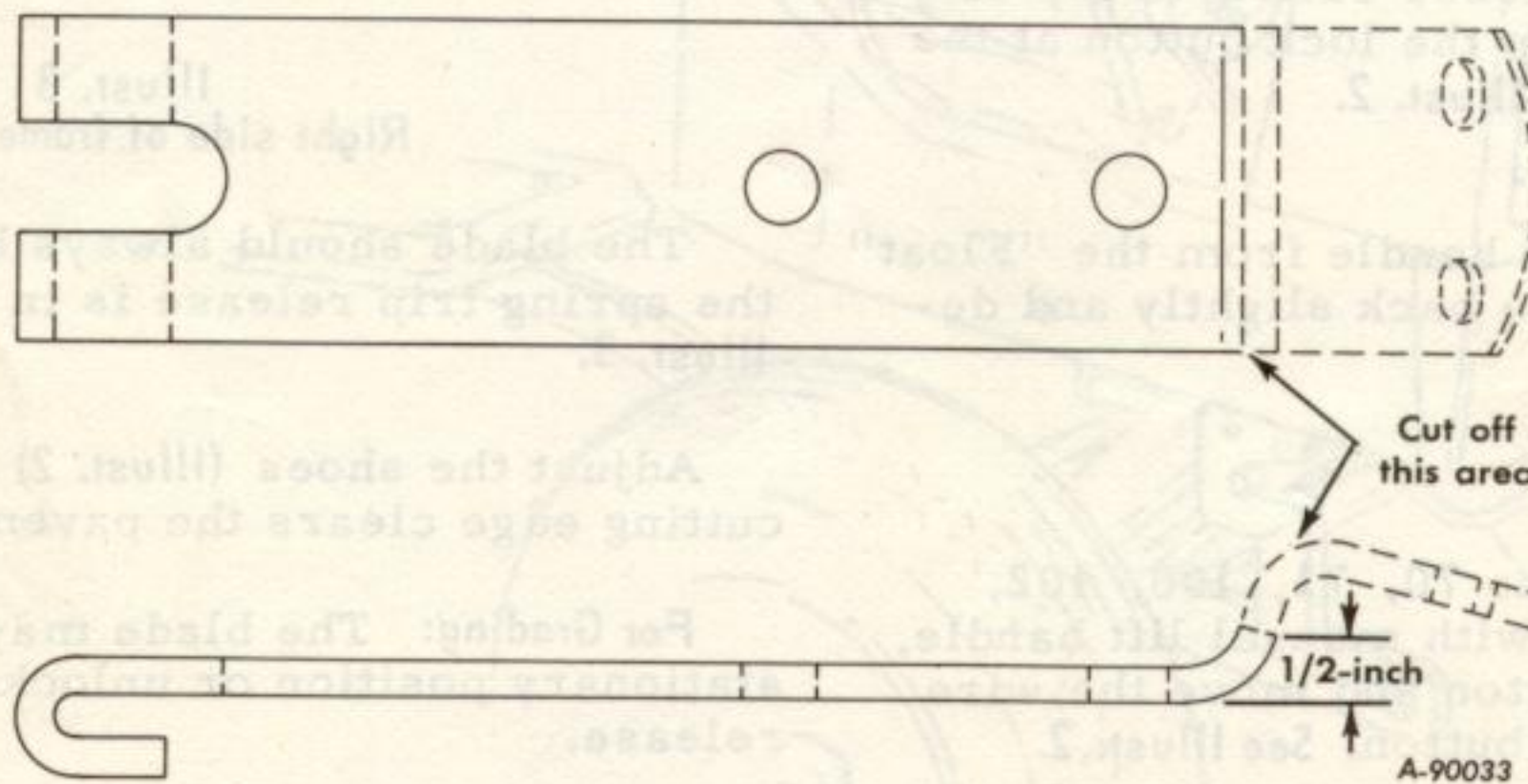
The above step is not required on the following tractors: Tractors with serial number 65458 and over, Models 70, 71, 72, 73, 100, 102, 104, 105, 106, 107, 122, 123, 124, 125, 126, and 127.

Cub Cadet 70, 71, 100, 102, 122 and 123 Tractors with mower mounting brackets: Remove the mounting brackets before attaching the blade subframe.

BLADE MODIFICATION

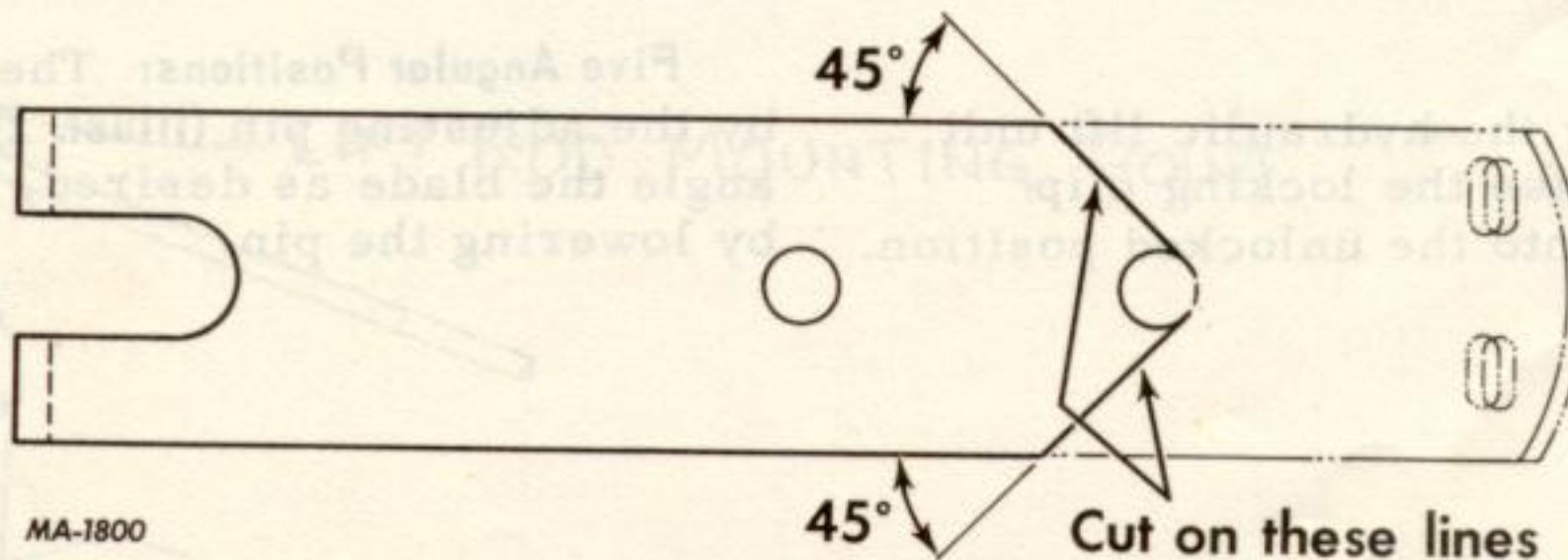
Tractors with Hydraulic Lift Unit: Order the following parts from parts stock; one 27 934A, spacer (1/2 x 1-1/32-inch pipe), one 1/2 x 1-7/8-inch hex. head bolt, and one 1/2-inch medium lock washer. Rework the lift bracket as shown in Illust. 4A.

Tractors with Electric Lift: Order one 1/2 x 1-inch hex. head cap screw. Rework lift bracket as shown in Illust. 4B.



Illust. 4A

Reworking diagram for lift bracket for tractors equipped with hydraulic lift.

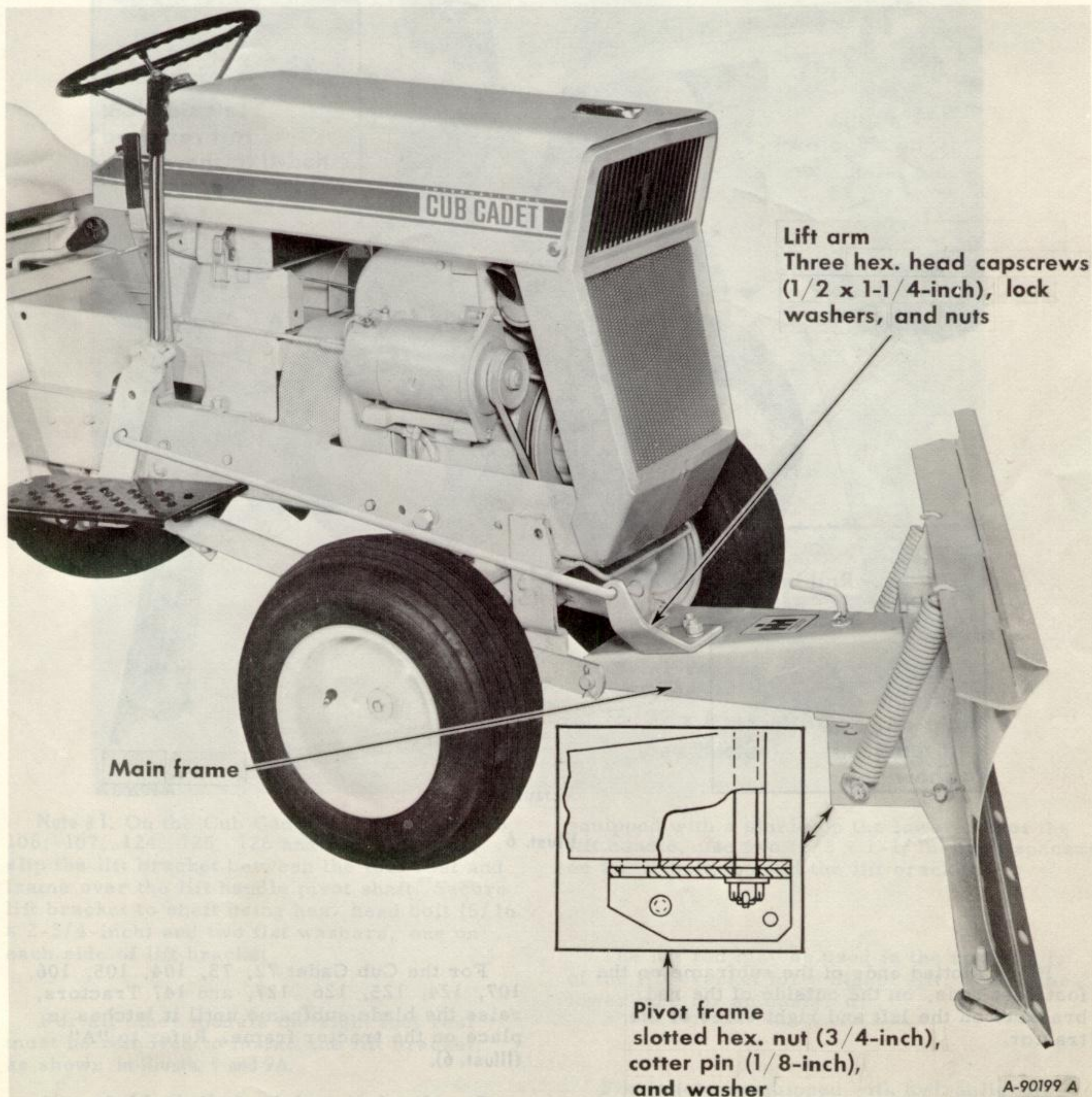


Illust. 4B

Reworking diagram for tractors equipped with electric lift.

A

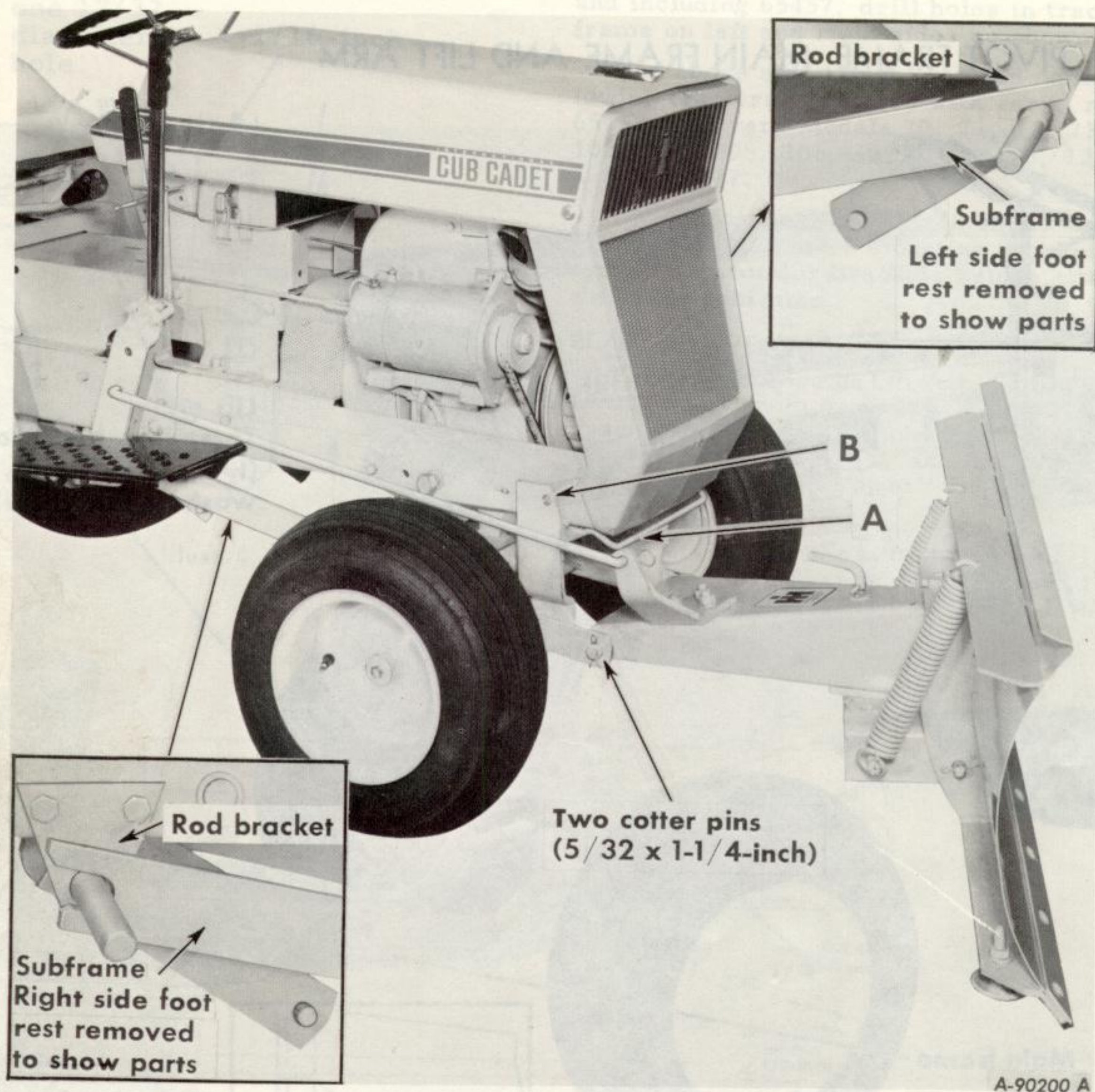
STEP 1. PIVOT FRAME, MAIN FRAME AND LIFT ARM



Illust. 5

SETTING UP

STEP 2. MAIN FRAME AND SUBFRAME



Illustr. 6

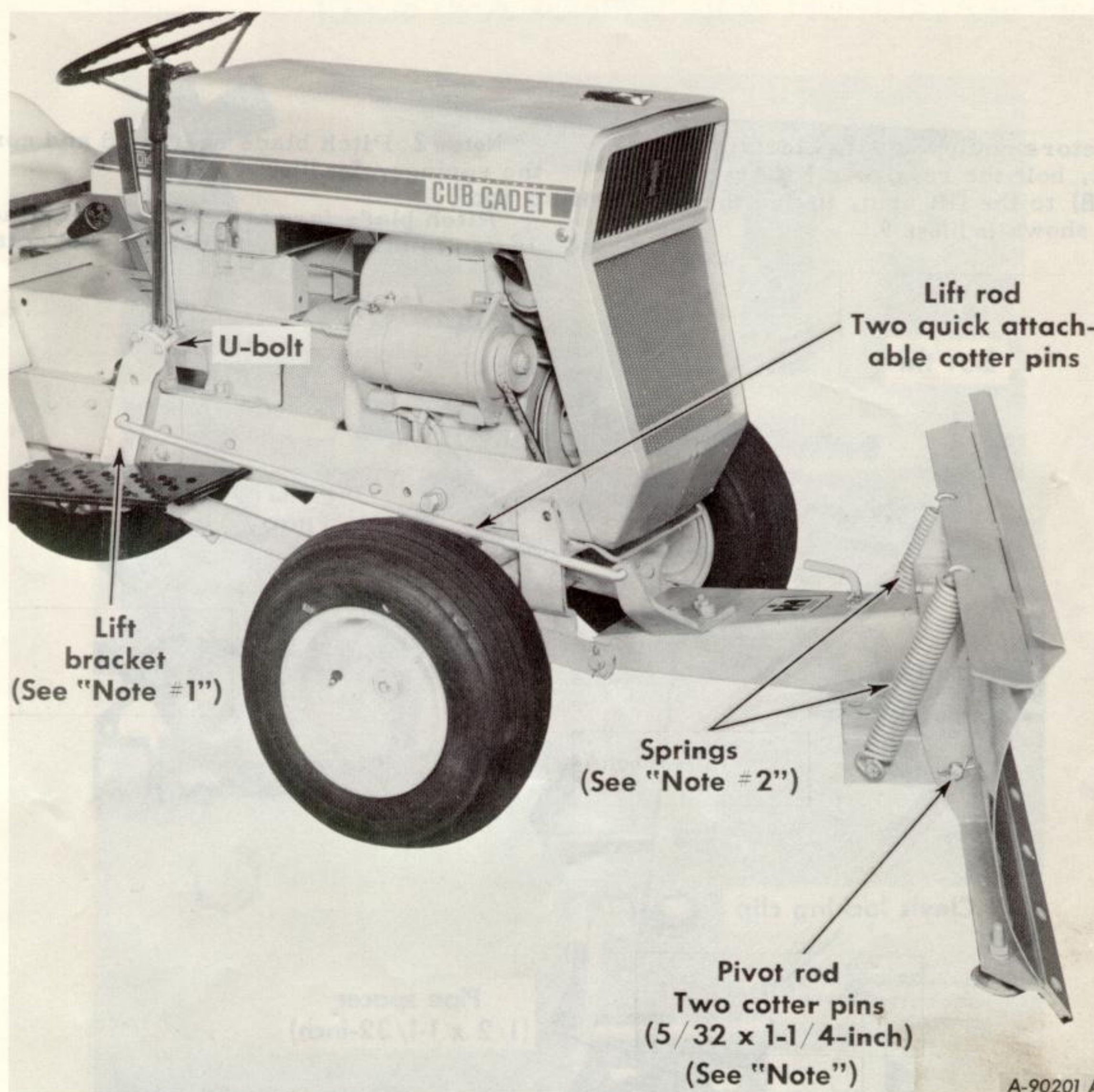
Place slotted ends of the subframe on the foot rest rods, on the outside of the rod brackets on the left and right sides of the tractor.

It may be necessary to spread the slotted ends of the subframe in order to place the subframe on the foot rest rods, on the outside of the rod brackets.

For the Cub Cadet 72, 73, 104, 105, 106, 107, 124, 125, 126, 127, and 147 Tractors, raise the blade subframe until it latches in place on the tractor frame. Refer to "A" (Illustr. 6).

For all other models, bolt the blade subframe to the tractor frame using two hex. head cap screws, (1/2 x 1-inch) and two (1/2-inch) medium lockwashers. Refer to "B" (Illustr. 6).

STEP 3. LIFT BRACKET, LIFT ROD, SPRINGS AND BLADE



Illust. 7

Note #1. On the Cub Cadet 72, 73, 104, 105, 106, 107, 124, 125, 126 and 127 Tractors, slip the lift bracket between the foot rest and frame over the lift handle pivot shaft. Secure lift bracket to shaft using hex. head bolt (5/16 x 2-3/4-inch) and two flat washers, one on each side of lift bracket.

For all other models the right foot rest must be removed to install the lift bracket, as shown in Illusts. 9 and 9A.

For tractors with manual lift handle secure the lift bracket to the handle using the U-bolt.

On all tractors except the Model 72, 73, 104, 105, 106, 107, 124, 125, 126, and 127 not

equipped with a shield on the lower end of the lift handle, use two (1/2 x 1-1/16-inch) spacers on the U-bolt, behind the lift bracket.

The lift rod may be used in the upper hole of the lift bracket for a higher lift, and in the lower hole for an easier lift.

For tractors equipped with hydraulic lift attachment, bolt the reworked lift bracket (see Illust. 4A) to the lift arm as shown in Illust. 8.

The lift bracket must be spaced away from the lift arm with the pipe spacer.

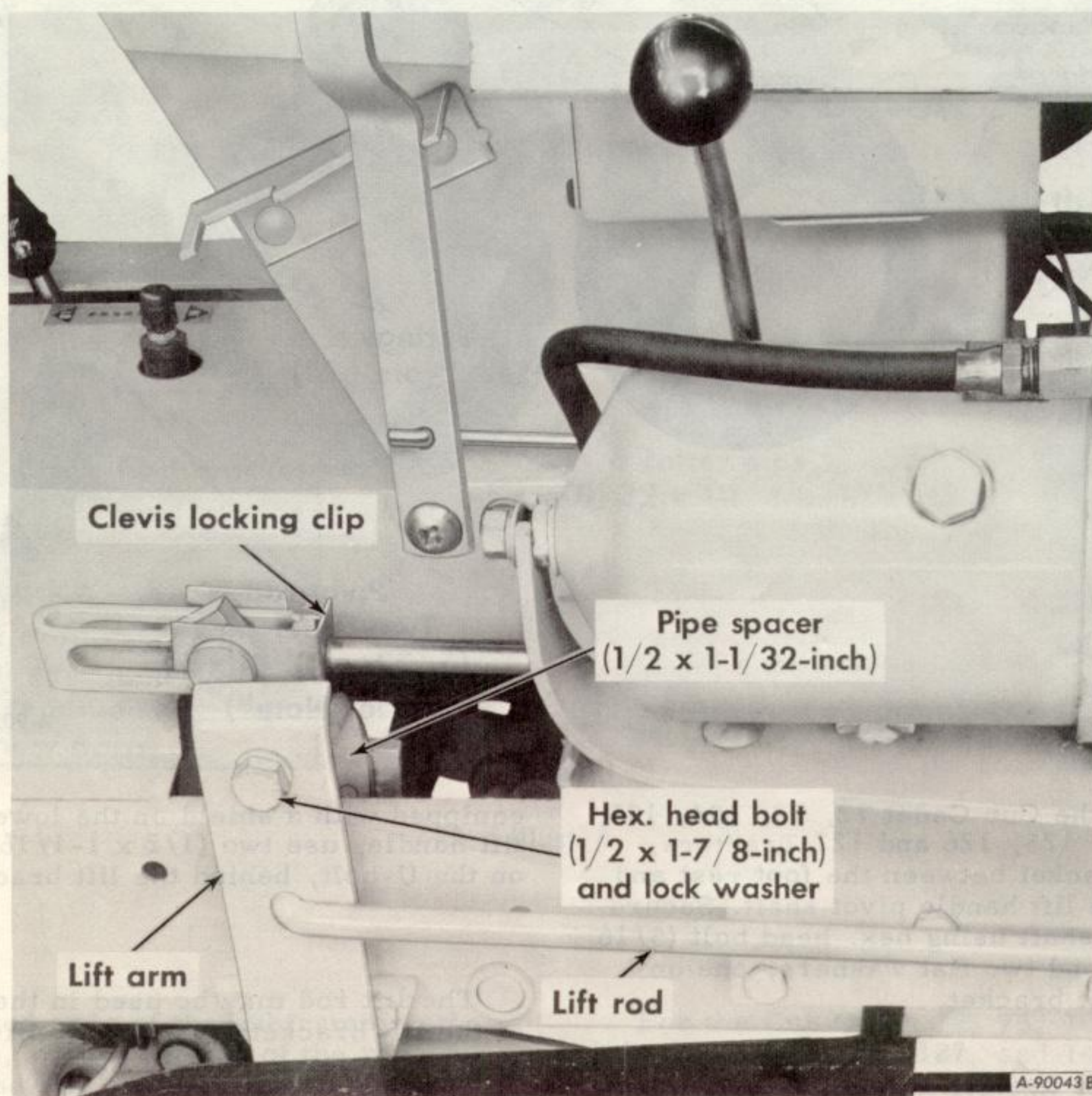
SETTING UP

STEP 3. LIFT BRACKET, LIFT ROD, SPRINGS AND BLADE—Continued

For tractors equipped with electric lift attachment, bolt the reworked lift bracket (See Illust. 4B) to the lift arm, inside the tractor frame, as shown in Illust. 9.

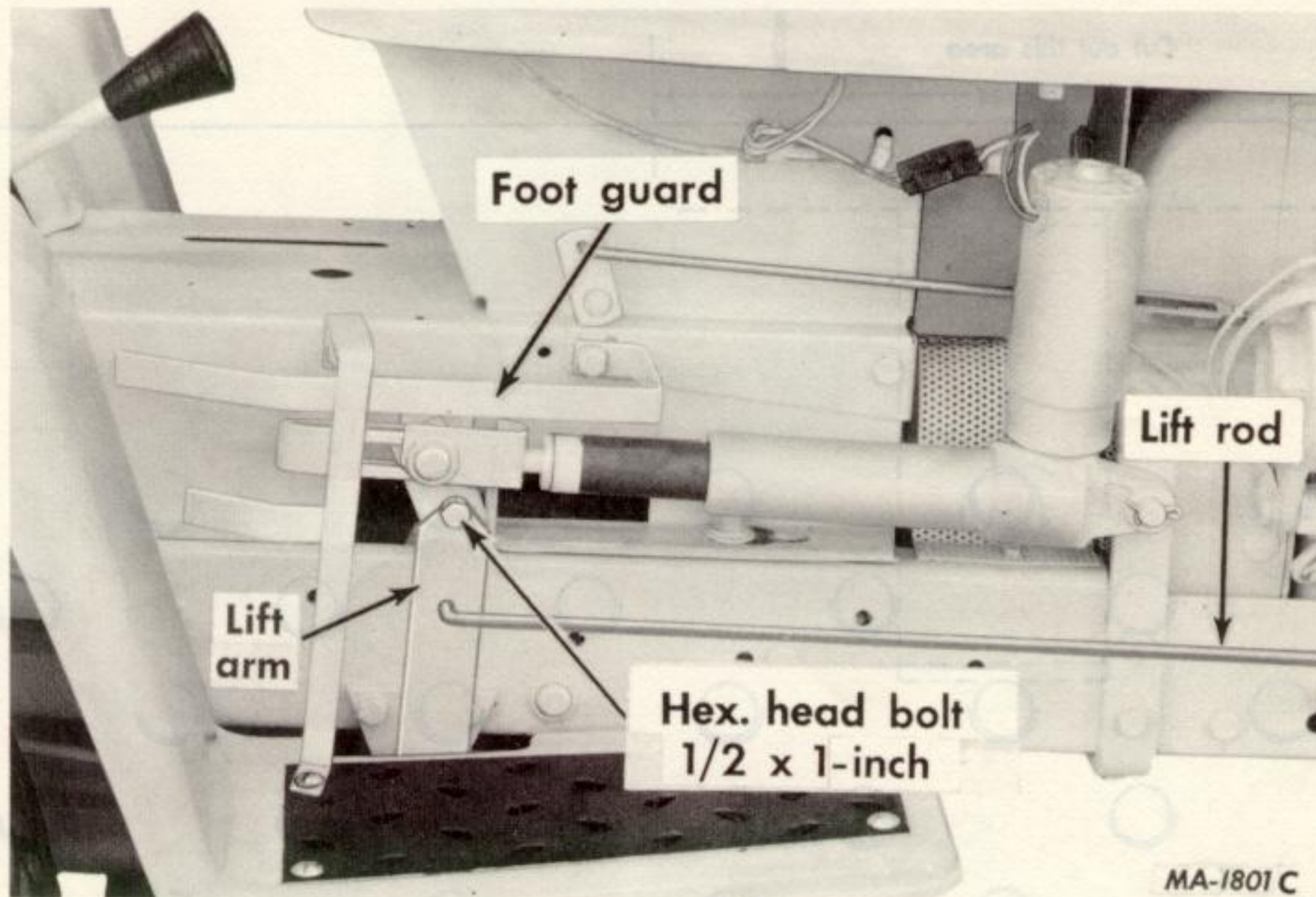
Note #2 Pitch blade rearward and connect the springs. See Illust. 7.

Pitch blade forward and down to attach pivot frame to blade, using pivot rod and cotter pins.



Illust. 8
Hydraulic Lift Arm Attachment.

STEP 3. LIFT BRACKET, LIFT ROD, SPRINGS AND BLADE—Continued



Illust. 9
Electric Lift Attachment.

DETACHING AND ATTACHING

Drive the tractor with the blade to storage location.

Lock the tractor brakes and lower the blade to the ground.

Remove the lift rod from the lift bracket and lift arm. See Illust. 7.

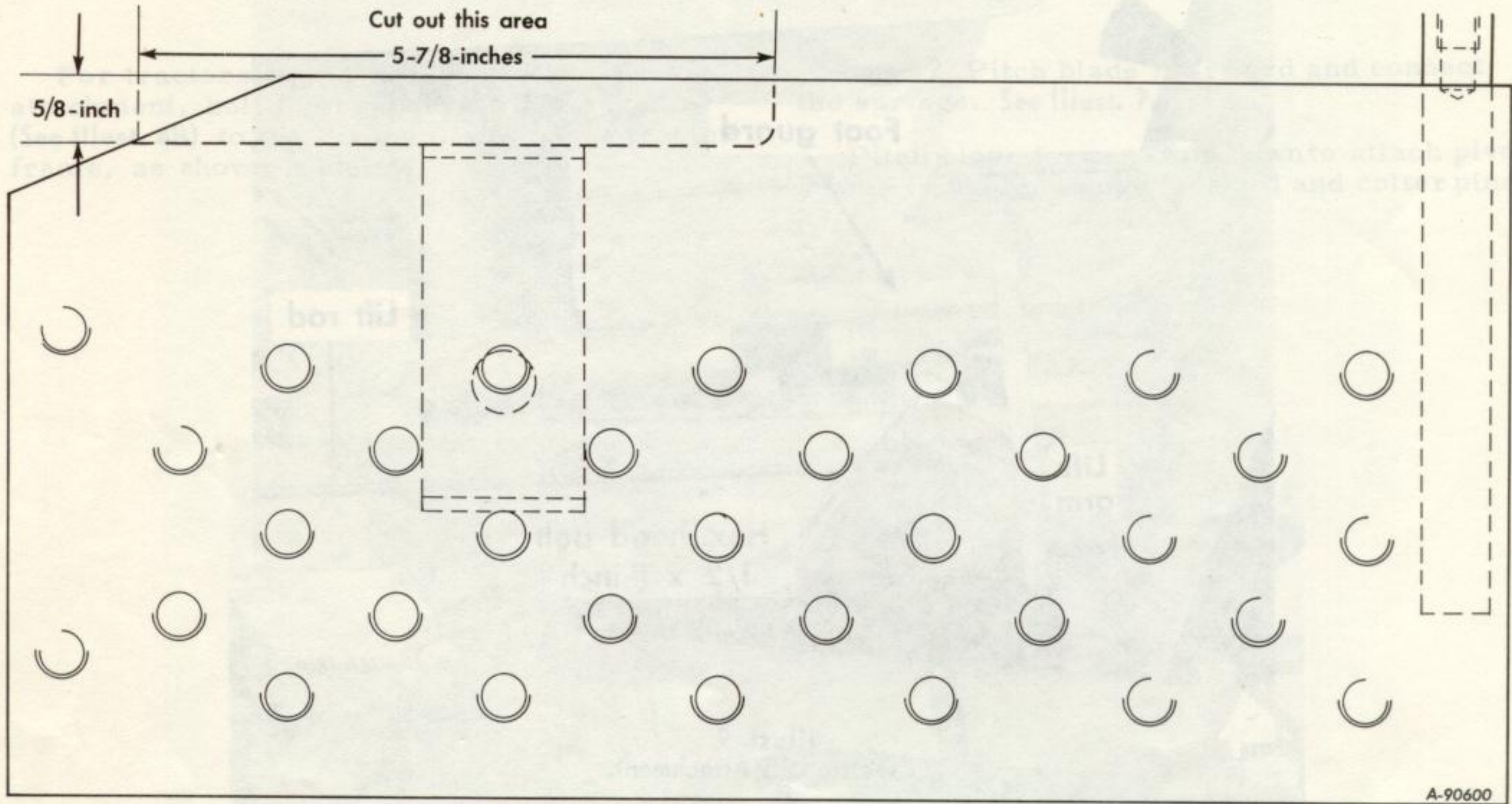
For Cub Cadet 72, 73, 104, 105, 106, 107, 124, 125, 126, 127, and 147 Tractors, press down on latch "A" (Illust. 6), and pull blade from tractor.

For all other models, remove the two hex. head capscrews and lockwashers. "B" (Illust. 6), and pull blade from tractor.

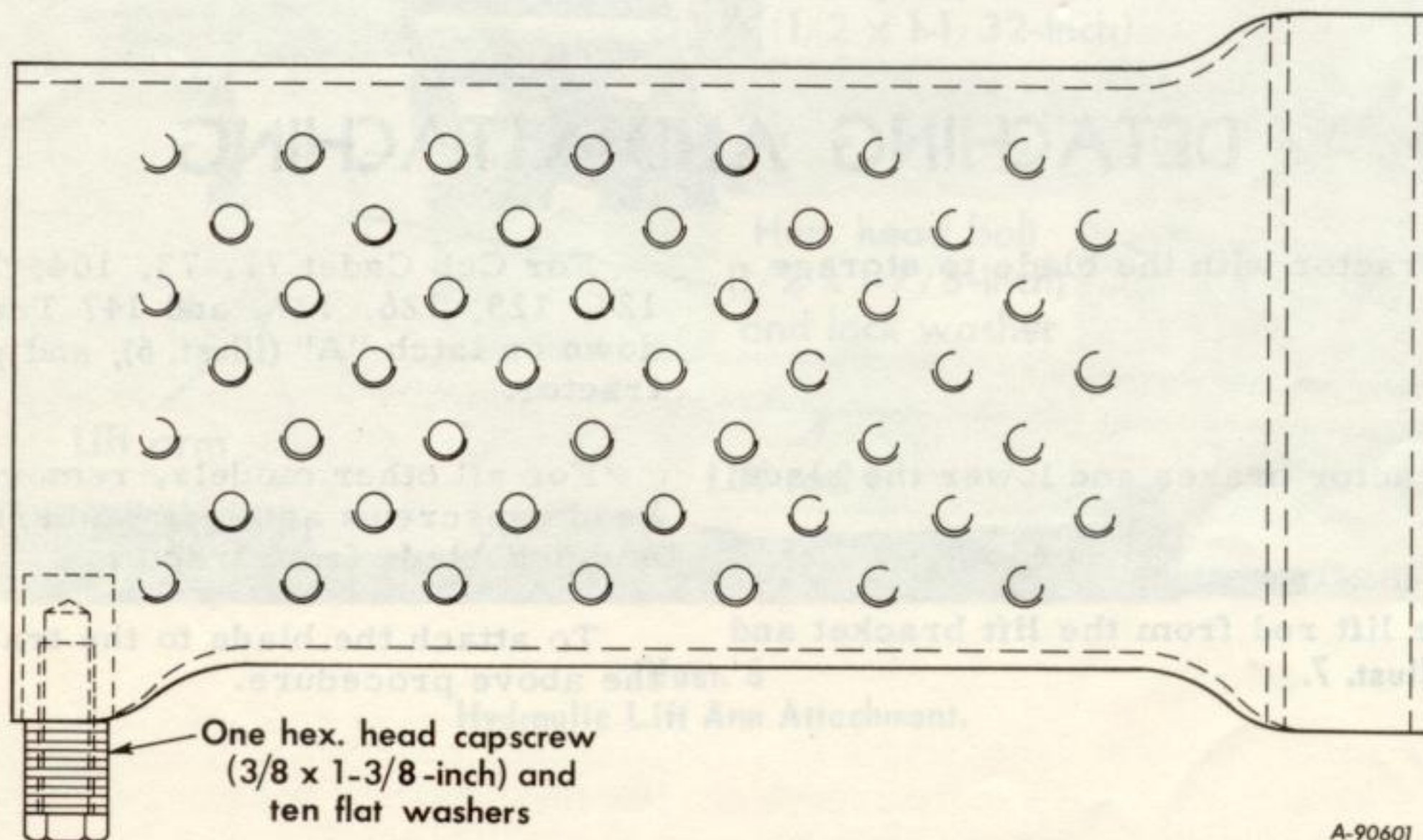
To attach the blade to the tractor, reverse the above procedure.

SETTING UP

STEP 3. LIFT BRACKET, LIFT ROD, SPRINGS AND BLADE—Continued



Illust. 10
Right Foot Rest for Models 100, 102, 122 and 123 Tractors.



Illust. 10A
Right Foot Rest for International Cub Cadet and
Models 70 and 71 Tractors.

MEMORANDUM



MEMBER, NATIONAL SAFETY COUNCIL

Accidents can be prevented with your help

No accident-prevention program can be successful without the wholehearted cooperation of the person who is directly responsible for the operation of equipment.

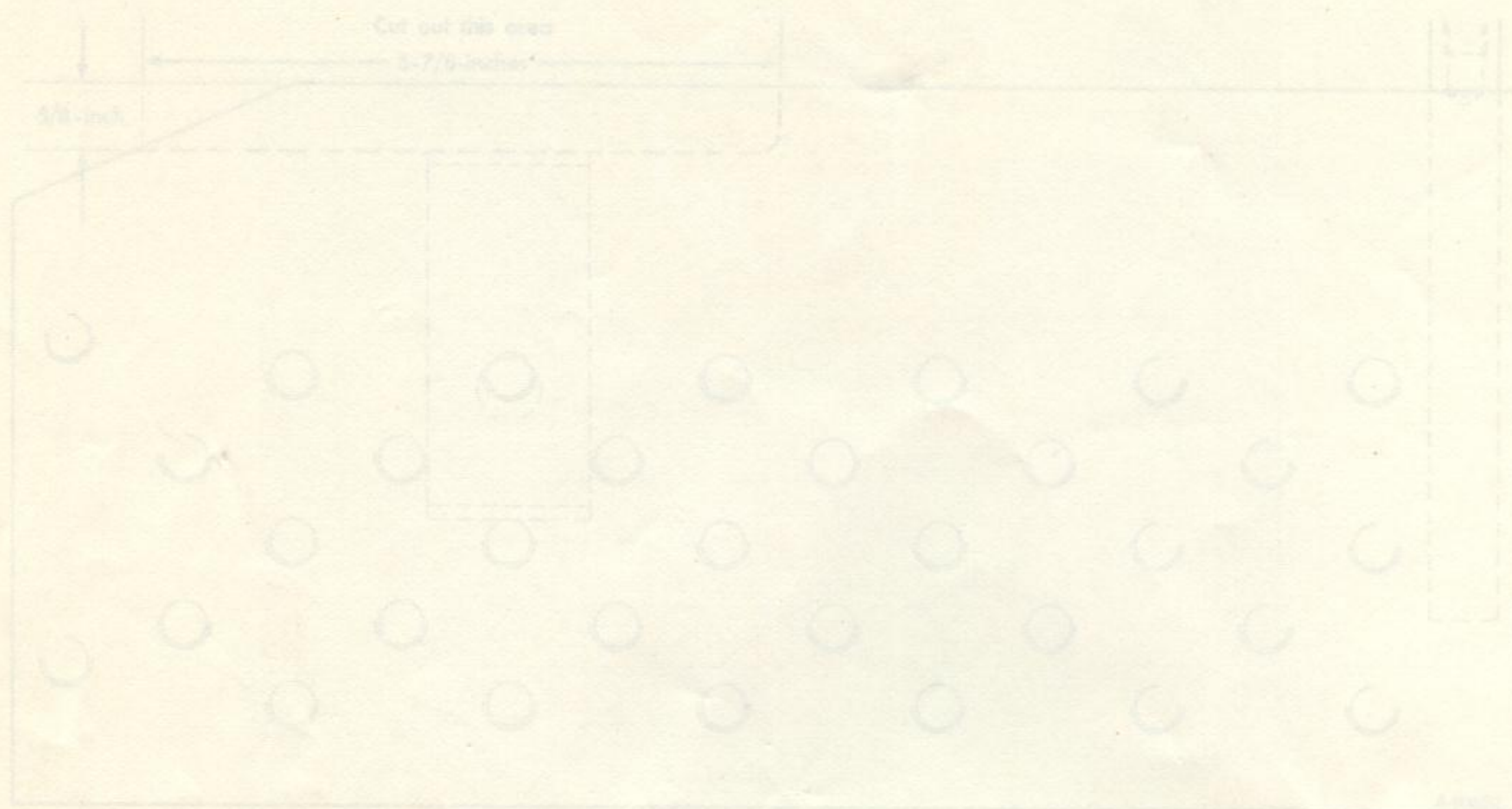
To read accident reports from all over the country is to be convinced that a large number of accidents can be prevented only by the operator anticipating the result before the accident is caused and doing something about it. No power-driven equipment, whether it be on the highway, in the harvest field or in the

industrial plant, can be safer than the man who is at the controls. If accidents are to be prevented—and they can be prevented—it will be done by the operators who accept a full measure of their responsibility.

It is true that the designer, the manufacturer, the safety engineer can help and they will help, but their combined efforts can be wiped out by a single careless act of the operator.

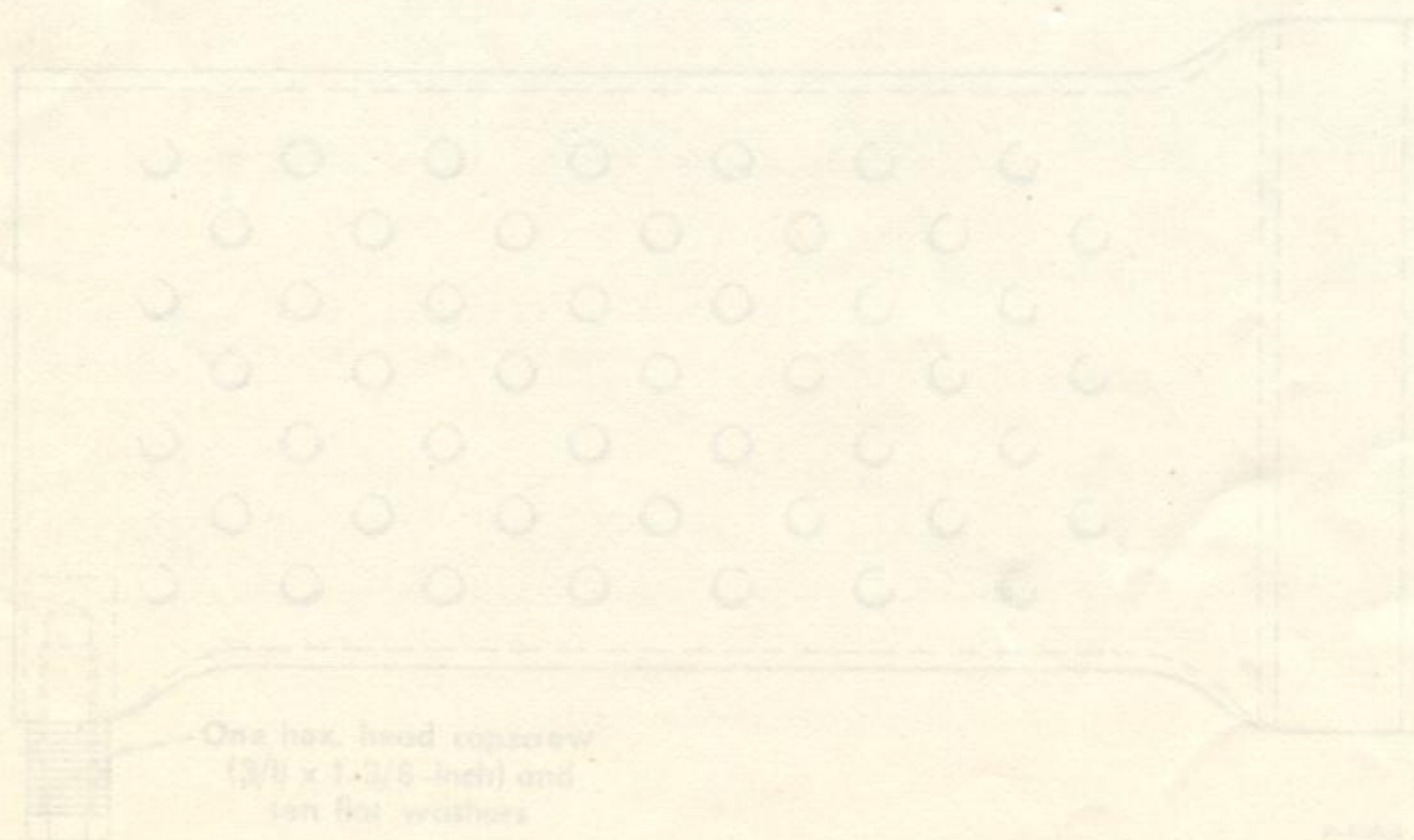
It is said that "the best kind of a safety device is a careful operator." We ask you to be that kind of an operator.

STEP 3. LIFT BRACKET, LIFT ROD, SPRINGS AND BLADE—Continued



Illustr. 10

Right Foot Rest for Models 100, 102, 122 and 123 Tractors.



Illustr. 10A

Right Foot Rest for International Cub Cadet and Models 70 and 71 Tractors.



MEMBER, NATIONAL SAFETY COUNCIL

Accidents can be prevented with your help

No accident-prevention program can be successful without the wholehearted co-operation of the person who is directly responsible for the operation of equipment.

To read accident reports from all over the country is to be convinced that a large number of accidents can be prevented only by the operator anticipating the result before the accident is caused and doing something about it. No power-driven equipment, whether it be transportation or processing, whether it be on the highway, in the harvest field or in the

industrial plant, can be safer than the man who is at the controls. If accidents are to be prevented—and they can be prevented—it will be done by the operators who accept a full measure of their responsibility.

It is true that the designer, the manufacturer, the safety engineer can help; and they will help, but their combined efforts can be wiped out by a single careless act of the operator.

It is said that "*the best kind of a safety device is a careful operator.*" We ask you to be that kind of an operator.



For Your Protection

Use IH Parts

TO THE OWNER—

You have just purchased one of the finest pieces of equipment available today. You can look forward to years of good service because International Harvester machines are designed better and built better to last longer.

When you need to purchase replacement parts or have your equipment serviced, we will be here, ready to serve you.

We stock genuine IH parts—the parts that are designed for your equipment, not just made for it.

We also offer you IH Blue Ribbon Service—the service that puts your equipment back to work in minimum time at an economical cost. We are here to serve you—call on us in the future.

Sincerely,

Your IH dealer

INTERNATIONAL HARVESTER COMPANY • 401 NORTH MICHIGAN AVENUE • CHICAGO, ILLINOIS 60611, U.S.A.

1 083 177 R2. Rev. 4. 9-70.

PRINTED IN UNITED STATES OF AMERICA