

# *Installing Instructions*

## **Three-Point Hitch**

(529 198 R91)

for

**INTERNATIONAL<sup>®</sup>**

**CUB CADET<sup>®</sup>**

**106, 107, 126, 127 and 147**

**TRACTORS**

**INTERNATIONAL HARVESTER COMPANY**

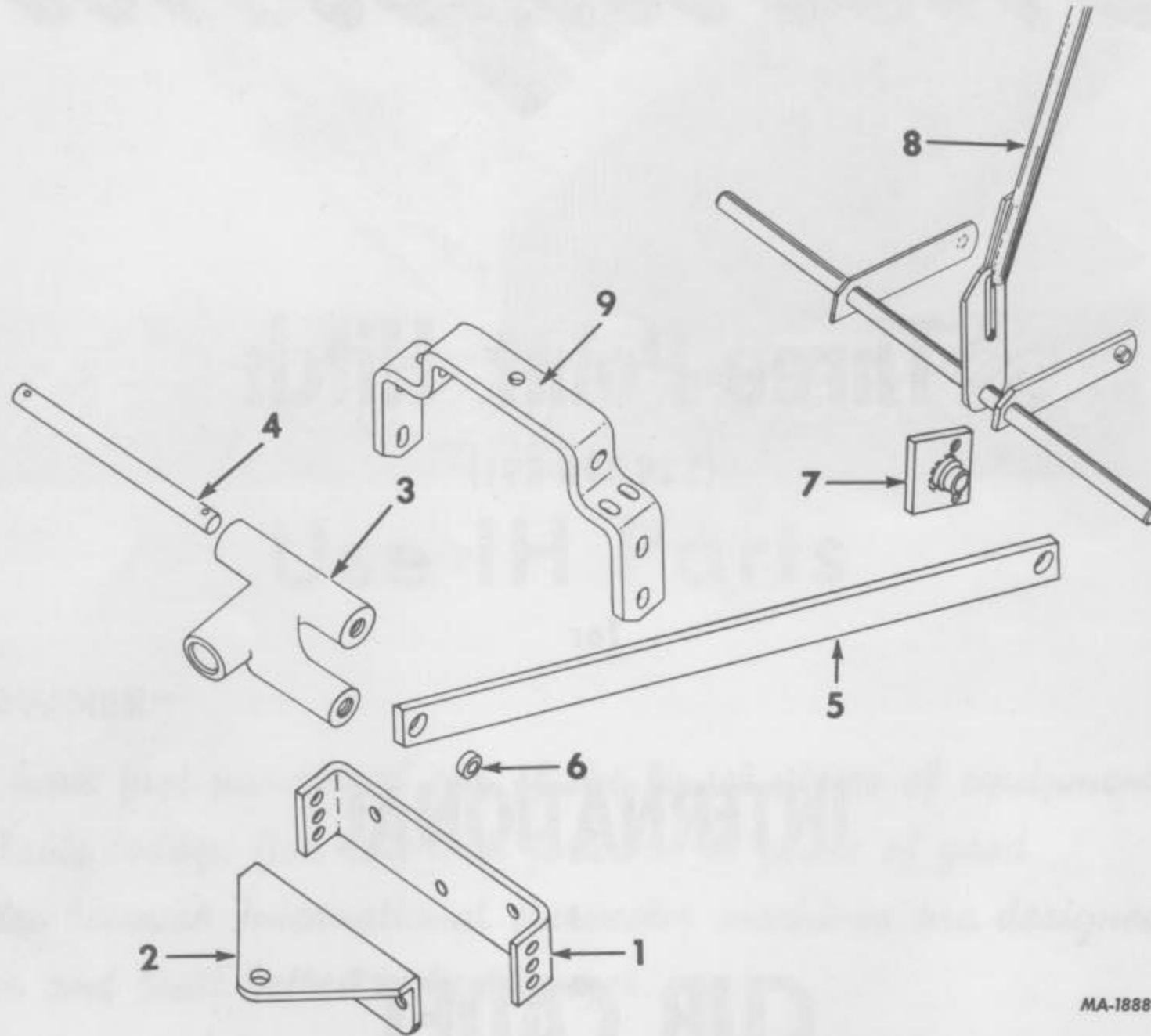
401 NORTH MICHIGAN AVE.

CHICAGO, ILLINOIS 60611, U.S.A.

## ORDERING NUMBER

529 198 R91 Three-Point Hitch for International Cub Cadet 106, 107, 126, 127 and 147 Tractors.

# INSTALLING INSTRUCTIONS



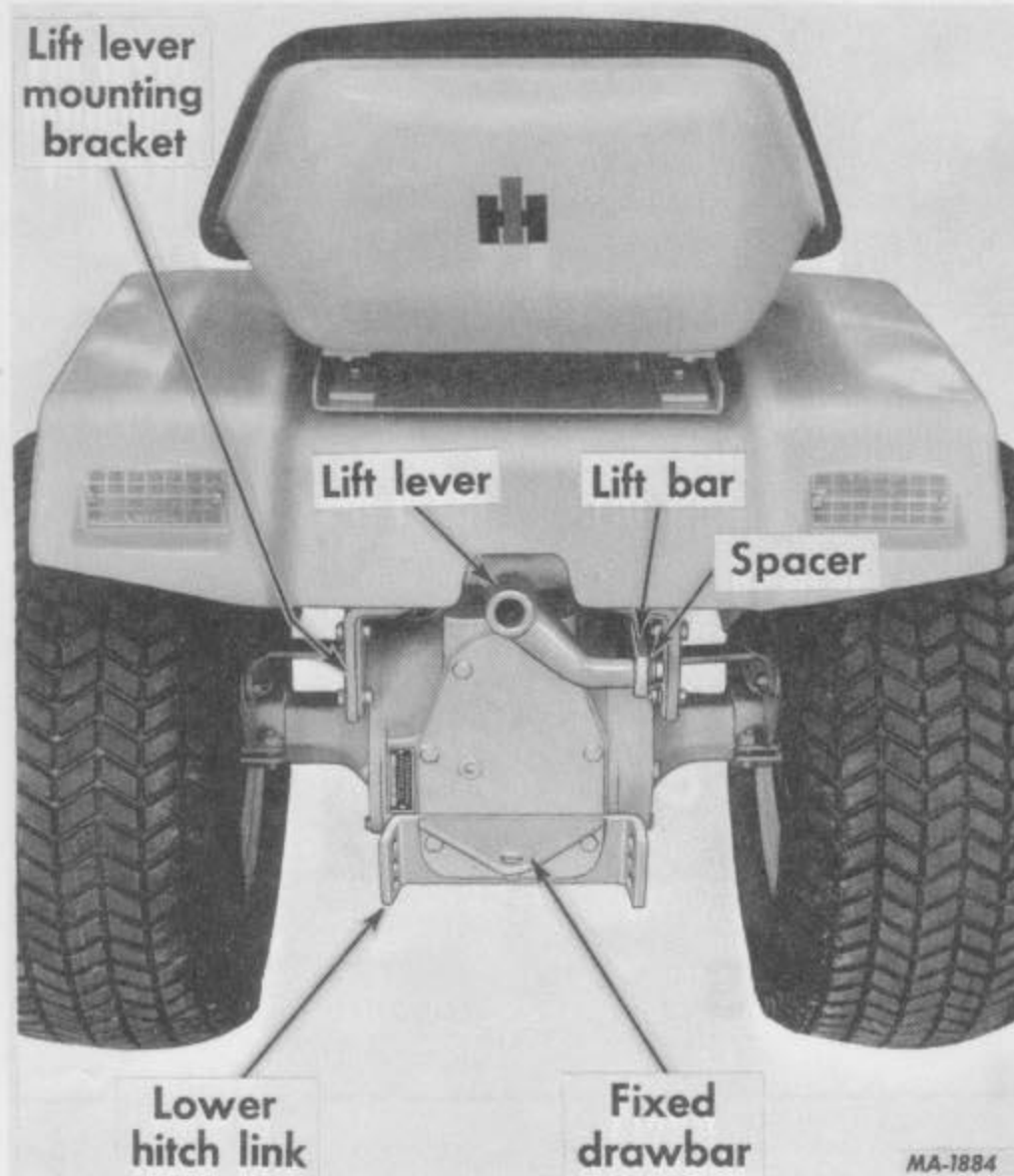
MA-1888

Illust. 2  
Three-point hitch and fixed drawbar.

Ref. No.	Description
1.	Lower hitch link
2.	Fixed drawbar *
3.	Lift lever
4.	Lift lever shaft
5.	Lift bar
6.	Lift bar spacer
7.	Lift bar attaching plate assembly
8.	Lift handle assembly *
9.	Lift lever mounting bracket

\* On basic tractor - not included in the Three-Point Hitch attachment.

## INSTALLING INSTRUCTIONS



Illust. 3

Remove the transmission case oil drain plug (Illust. 3) and allow all oil to drain out, then replace the plug.

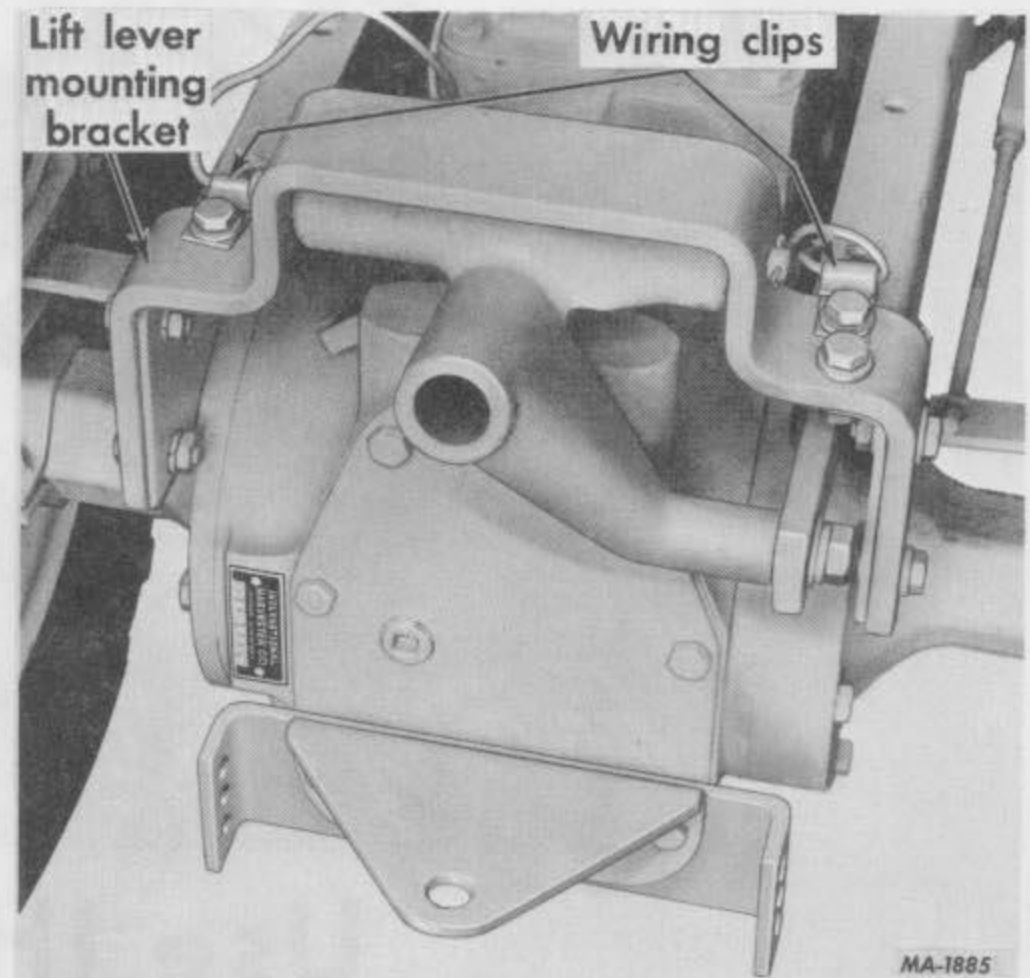
Remove and discard the transmission case rear cover shield. Then replace the cap screws at the top of the transmission case rear cover plate.

Remove and discard the three lower cap screws from the transmission case rear cover plate.

**Note:** Reference numbers in parenthesis following the description of a part in the following installation instructions are for identification purposes. See Illust. 2.

Install the lower hitch link (1) and fixed drawbar (2) at the bottom of the transmission case rear cover plate using the three  $\frac{3}{8}$  x  $1\frac{1}{4}$ -inch cap screws. See Illusts. 3 and 5.

Install the lift lever mounting bracket (9) to the rear of the frame using three  $\frac{3}{8}$  x 1-inch cap screws and flat washers in the upper three



Illust. 3A  
Fender and seat assembly removed to show lift lever mounting bracket.

slots. In the four side slots use four  $\frac{3}{8}$  x 1-inch cap screws, flat washers, lock washers, and jam nuts.

**Note:** All cap screws on the lift mounting bracket must be torqued to 28-32 foot pounds. See Illust. 3A.

If the tractor is equipped with electric lighting, be sure to reattach wiring clips when installing the lift lever mounting bracket. See Illust. 3A.

Install the lift lever (3) into the mounting bracket using the shaft (4) and two  $\frac{3}{32}$  x  $\frac{7}{8}$ -inch cotter pins. See Illust. 5.

**Note:** Insert the shaft into the hole in the right or left fender side sheet and pull it through the holes in the lift lever mounting bracket.

If the tractor is equipped with wide flotation-type tires it is necessary to remove one of the rear wheels in order to insert the shaft.



## INSTALLING INSTRUCTIONS

Remove the two cap screws, lock washers, and nuts holding the lift ratchet (Illust. 5) and spacer assembly at the right side of the frame. Then remove the lift ratchet and spacer assembly.

Insert the lift bar (5) in, from the rear of the tractor, with the smaller hole to the front.

Assemble the lift bar attaching plate (7) to the lift bar (5) by inserting the pin on the attaching plate into the front hole in the lift bar and secure with a  $3/32 \times 1$ -inch cotter pin. It may be necessary to tilt the lift bar and revolve the attaching plate enough so the cotter pin can be inserted in the hole in the attaching plate pin.

If the tractor is equipped with the electric lift attachment (7) is not required, and lift bar is attached directly to the pin on the rockshaft assembly.

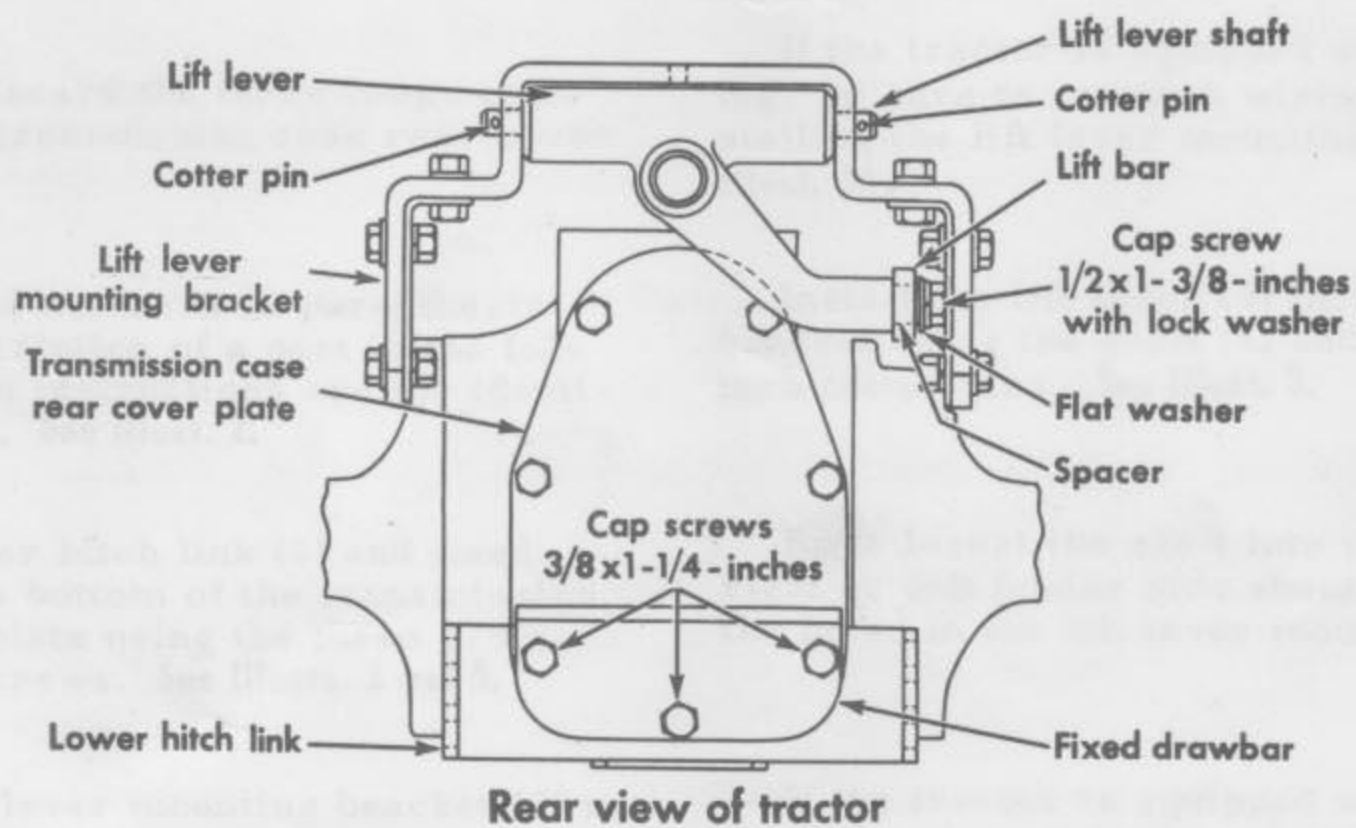
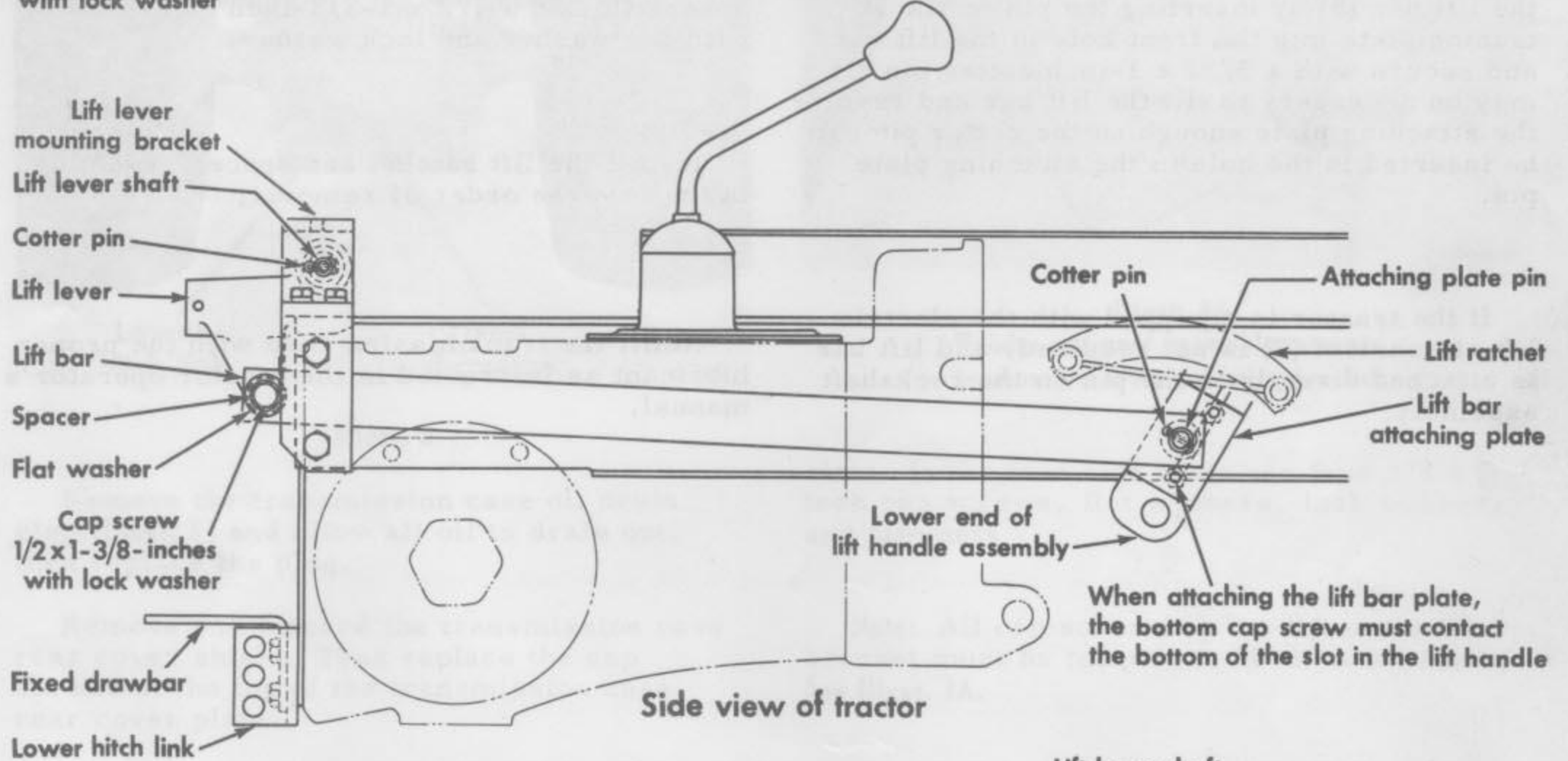
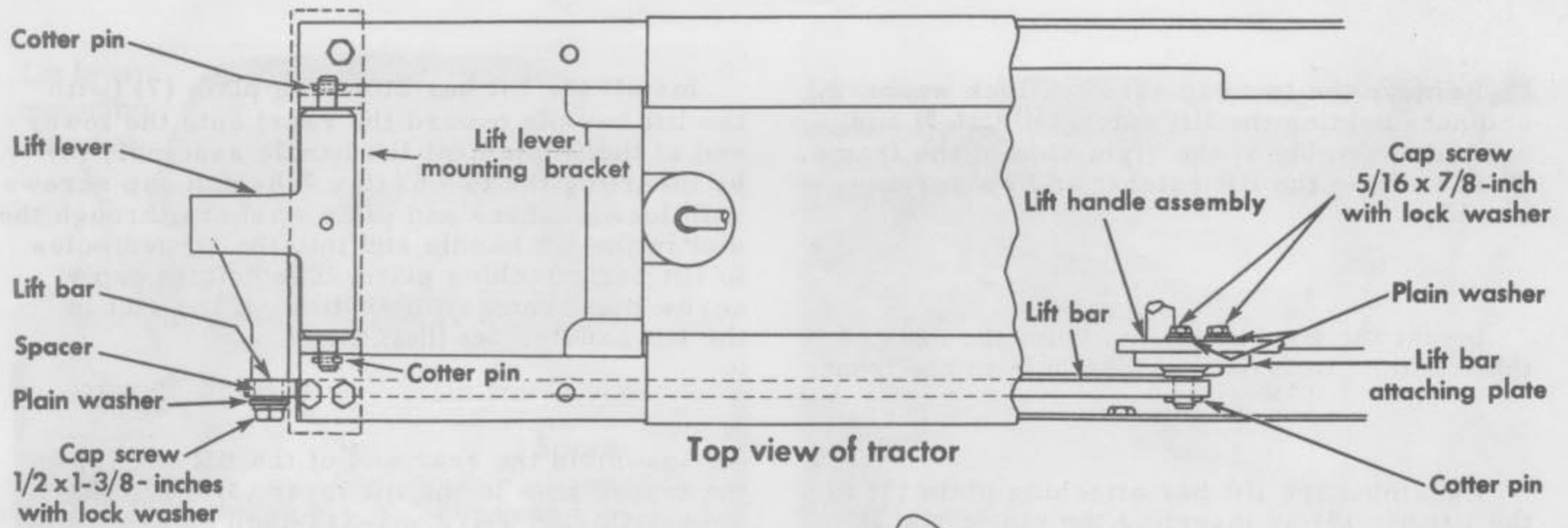
Install the lift bar attaching plate (7) (with the lift bar pin toward the rear) onto the lower end of the implement lift handle assembly (8) by inserting the two  $5/16 \times 7/8$ -inch cap screws with lock washers and plain washers through the slot in the lift handle and into the tapped holes in lift bar attaching plate. The bottom cap screw must contact the bottom of the slot in the lift handle. See Illust. 5.

Assemble the rear end of the lift bar (5) to the tapped hole in the lift lever (3) using the spacer (6) and a  $1/2 \times 1-3/8$ -inch cap screw with flat washer and lock washer.

Install the lift ratchet and spacer assembly in the reverse order of removal.

Refill the transmission case with the proper lubricant as instructed in the tractor operator's manual.

# INSTALLING INSTRUCTIONS



Illust. 5  
Three-point hitch installation diagram.

MB-131





*For Your Protection*

## Use IH Parts

### TO THE OWNER—

*You have just purchased one of the finest pieces of equipment available today. You can look forward to years of good service because International Harvester machines are designed better and built better to last longer.*

*When you need to purchase replacement parts or have your equipment serviced, we will be here, ready to serve you.*

*We stock genuine IH parts—the parts that are designed for your equipment, not just made for it.*

*We also offer you IH Blue Ribbon Service—the service that puts your equipment back to work in minimum time at an economical cost. We are here to serve you—call on us in the future.*

*Sincerely,*

---

*Your IH dealer*

INTERNATIONAL HARVESTER COMPANY • 401 NORTH MICHIGAN AVENUE • CHICAGO, ILLINOIS 60611, U.S.A.

1 082 873 R1. 10-69.

PRINTED IN UNITED STATES OF AMERICA