

Installing Instructions

**ELECTRIC LIGHTING
(385 110 R92)**

for

INTERNATIONAL[®]

CUB CADET[®]

70 and 100

Tractors

with

Electric Starting

INTERNATIONAL HARVESTER COMPANY

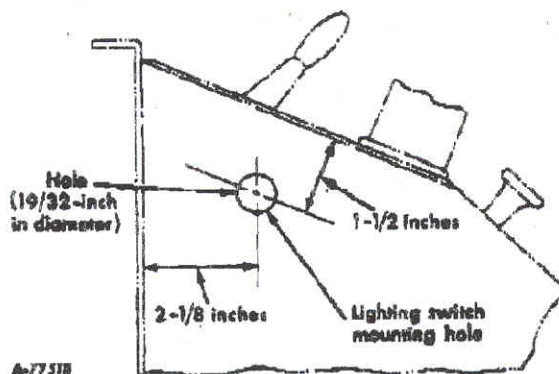
180 NORTH MICHIGAN AVE.

CHICAGO 1, ILLINOIS, U.S.A.

It is the policy of International Harvester Company to improve its products whenever it is possible and practical to do so. We reserve the right to make changes or add improvements at any time without incurring any obligation to make such changes on products sold previously.

All illustrations and descriptive matter in this publication apply to International Harvester products sold under the International, McCormick, or McCormick - International trade name.

INSTALLING INSTRUCTIONS



Illustr. 1
Pedestal assembly drilling diagram.

For convenience in installing the lighting unit, raise the hood and remove the battery.

Surfaces under all terminals must be clean and bright, so a good electrical connection will be made. Distribute extra wire between fastening points, to present a neat appearance.

All clips must grip the cable and harness tightly to prevent rapid cable wear.

Routing of cables through cable clips and at lighting switch is to be made in such a manner as to prevent cable coming in contact with moving parts and sharp edges of metal.

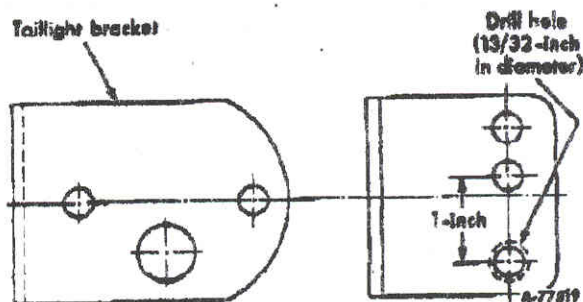
Note: Reference numbers in parenthesis following the description of a part in the following installation instructions are for identification purposes. See Illustrs. 3 and 4.

Drill a 19/32-inch hole in the pedestal at the left side of the tractor as shown in Illustr. 1.

Drill the present 9/32-inch hole in the taillight bracket to a 13/32-inch hole as shown in Illustr. 2.

To insure a good ground for the taillight, the taillight mounting surface on the taillight bracket and the taillight bracket surface on the tractor must be clean and a good electrical connection must be established.

Assemble the taillight to the taillight bracket using the 1/4-inch hex head nuts and lock washers.



Illustr. 2
Taillight bracket drilling diagram.

Remove the left rear cap screw from the seat spring support and assemble the taillight bracket (16) and a cable clip (15) at this location using the same cap screw.

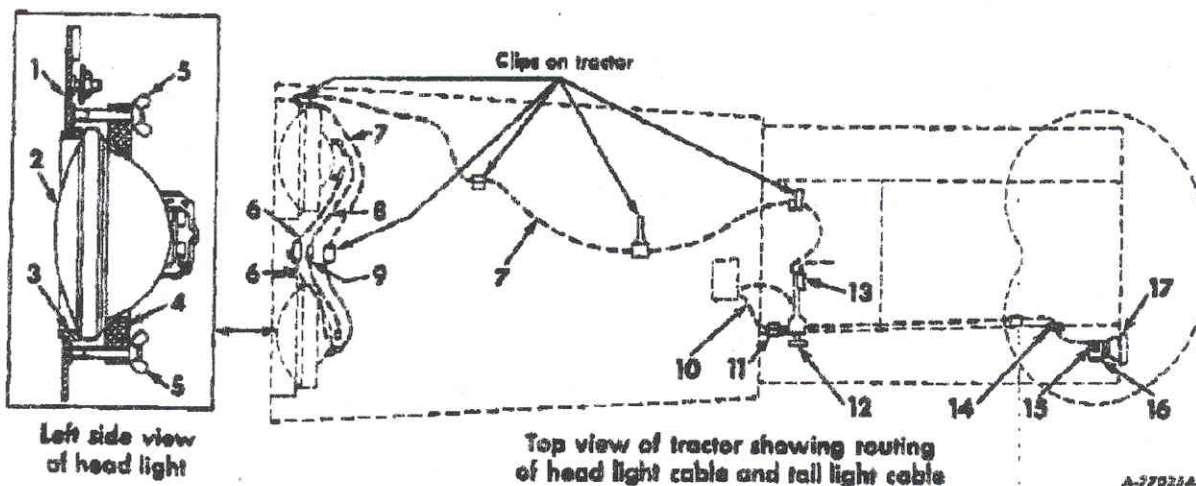
Remove the left rear cap screw at the bottom of the pedestal and replace with the 3/8 x 1-inch cap screw and cable clip (11) and secure with lock washer and nut.

Place the grommet (14) on the taillight cable (10), then connect the cable to the taillight (17).

Insert the end of the cable having the ring type terminal, through the 17/32-inch hole in the left side of the seat spring support and install the grommet (14) in this hole. Route the cable along the underside of the frame and attach to cable clip (11) previously assembled. Then bring the cable up through the rectangular hole in the frame provided for the steering post, and to the vicinity of the hole previously drilled in the left side of the pedestal, for the lighting switch. See Illustrs. 1 and 3. Assemble the headlight cable (7) with the ring type terminal through the opening at the front of the pedestal and bring it up to the vicinity of the lighting switch hole. Then assemble the cable in the permanent cable harness clips already on the tractor. See Illustr. 3.

Remove the light green cable terminal from the key ignition switch. Connect the push-on female type terminal on the "lighting switch to key switch junction" cable (13) to the vacated terminal on the key switch. See Illustr. 4.

INSTALLING INSTRUCTIONS



Illust. 3

Index to reference numbers shown in Illust. 3.

Ref. No.	Description	Ref. No.	Description
1	Headlight mounting panel	10	Cable, lighting switch to taillight
2	Sealed beam headlight (2)	11	Clip, taillight cable - on pedestal left rear mounting bolt
3	Headlight retaining ring (2)	12	Lighting switch
4	Headlight clamping ring (2)	13	Cable, lighting switch to key switch junction
5	Wing nut (4)	14	Grommet, taillight cable
6	Cable, headlight to ground	15	Clip, taillight cable - on seat spring support left rear mounting bolt
7	Cable, lighting switch to left headlight	16	Taillight mounting bracket
8	Cable, left headlight to right headlight	17	Taillight
9	Clip, headlight cable - on voltage regulator mounting bracket lower mounting bolt		

Disassemble the lighting switch by removing the switch knob mounting nut, terminal screws and lock washers.

Connect the ring type terminal on the headlight cable (7) and taillight cable (10) to one terminal of the lighting switch, using a lock washer and terminal screw. Then connect the ring type terminal on the "lighting switch to key switch junction" cable (with in-line fuse) (13) to the other terminal of the lighting switch, using a lock washer and terminal screw. See Illust. 4.

Place the 19/32 x 1-1/16-inch spacer on the lighting switch and insert the switch through the hole in the pedestal, (from the inside) and

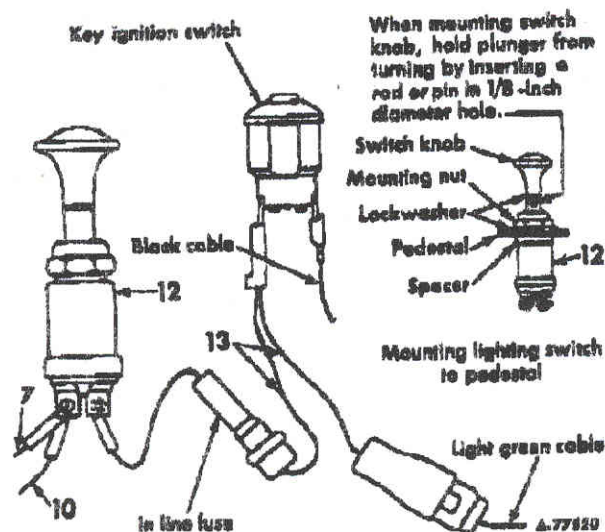
secure it with the lock washer and mounting nut on the outside as shown in Illust. 4.

Remove the voltage regulator from the bracket at the top of the grille housing, then remove and discard the bracket.

Remove the grille panel strip clamps at the top of the grille housing and remove and discard the panel strip. Save the clamps and hardware.

Remove the backing paper from the self adhesive headlight panel decal. Set the decal on the new panel lightly and as straight as possible, then apply pressure to the entire surface so there are no loose portions.

INSTALLING INSTRUCTIONS



Illustr. 4
View showing connections at lighting switch and key ignition switch.

Assemble the sealed beam units on the new headlight panel (Illustr. 3) in the proper order as follows: headlight retaining ring (3), sealed beam unit (2), headlight clamping ring (4), and wing nuts (5). The locating pad "A" on the sealed beam unit (Illustr. 5) must be assembled in the clearance slot of the rear retaining ring and in position as close as possible to horizontal center line of eyesight. See Illustr. 5. Tighten the wing nuts uniformly.

Install the headlights and mounting panel assembly at the top of the grille housing using the previously removed grille panel strip clamps and hardware. See Illustr. 5.

Assemble the voltage regulator to the new bracket. Then install the assembly at the top of the grille housing with the cable harness clip (9) on the lower belt and the "headlight to ground" cables (6) on the upper belt. See Illustr. 3 and 5.

Connect the ring type terminal on the long "lighting switch to left headlight" cable (4) and one terminal on the "left headlight to right headlight" (12-inch) cable (8) to the outer terminal on the left headlight and connect the other end of the "left headlight to right headlight" cable (8) to the outer terminal on the right headlight.

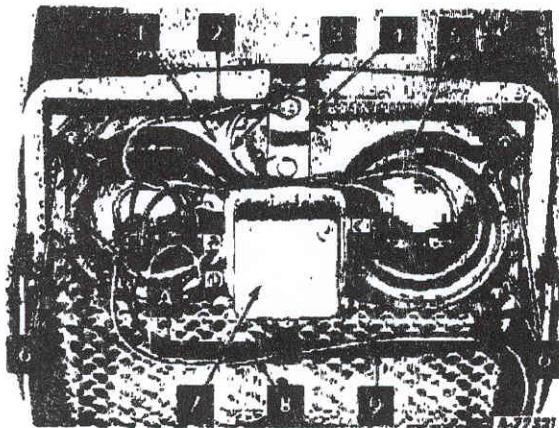
Connect the terminals on the "headlight to ground" cables (6) to the inner terminals on the left and right headlights. See Illustr. 3 and 5.

After all connections have been made, replace the battery and tighten the battery hold-down wing nuts to from 15 to 18 inch pounds torque.

Note: When replacing the battery, make certain the ground cable is connected to the negative (-) terminal on the battery.

Lower the hood.

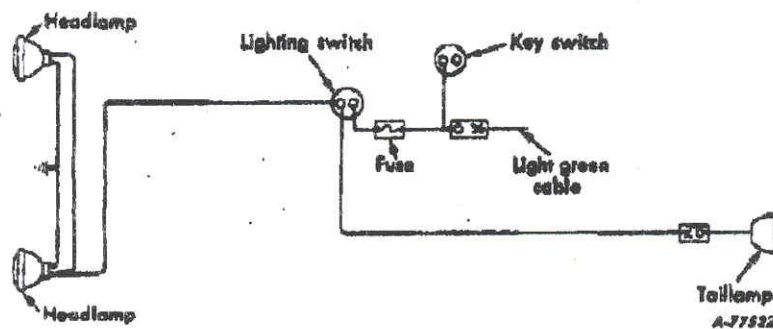
INSTALLING INSTRUCTIONS



Index to reference numbers shown in Illustr. 5.

Ref. No.	Description
1	Headlight mounting panel
2	Cable - left headlight to ground 3"
3	Cable - right headlight to ground 3"
4	Voltage regulator mounting bracket
5	Cable - left headlight to right headlight
6	Grille panel strip clamps
7	Voltage regulator
8	Cable - lighting switch to left headlight 6'
9	Cable harness

Illustr. 5
View showing mounting of headlights and voltage regulator bracket.



Illustr. 6
Wiring Diagram.