



OPERATOR'S MANUAL

SETTING UP INSTRUCTIONS

INTERNATIONAL[®] Rotary Mowers

(38-, 42-, and 48-inch, 3-spindle)

**OPERATION
MAINTENANCE
LUBRICATION**



To The Owner

Your new rotary mower is designed to meet today's exacting operating requirements. The ease of operation and ability to adjust to field conditions lighten your work and shorten your hours on the job.

You are urged to consult your International Harvester dealer concerning unusual field conditions or special applications. Let the experience of your dealer and the organization associated with him serve you.

Be sure to read the instructions for Adjusting and Operating in this manual. Check each item referred to and acquaint yourself with the adjustments required to obtain effi-

cient operation and maximum trouble-free performance. Remember, a machine which is properly lubricated and adjusted saves time, labor, and fuel.

After the operating season, thoroughly clean your mower and inspect it. Preventive maintenance pays dividends. Your dealer has original-equipment parts which assure proper fit and best performance. He is able to recondition your equipment to a like new condition.

Cover Illustration
48-inch, 3-spindle mower

INTRODUCTION

The 3 spindle, center mounted, 38-, 42-, and 48-inch rotary mowers, are designed for use on International® Cub Cadet® Tractors having serial number 65458 and higher.

The mower extends beyond the tractor wheels to permit cutting close to shrubbery, trees, fences, buildings, drive and walkway edges, etc.

The mower is driven by a V-belt from the engine mounted power take-off clutch. The clutch is engaged and disengaged by means of a hand lever mounted on the steering wheel standard.

A heavy-duty V-belt connects and drives the three spindles and permits independent turning of the blades when an obstruction is struck by a blade. A spring-loaded belt tightener maintains proper belt tension.

The 48-inch mower has a spindle drive system wherein each spindle; from left to right, is driven progressively faster to aid in cutting and discharging the cut material.

The blade spindle bearings are automotive type tapered roller bearings that can be re-lubricated and are carefully enclosed and protected by seals.

The three cutting blades are designed to create a suction to lift the grass and hold it for an even cut.

Raising and lowering of the mower is done by means of the tractor lift handle or hydraulic lift unit attachment.

The lift linkage provides and maintains a true parallel lift for the mower throughout the cutting height range of 1 inch to 4 inches.

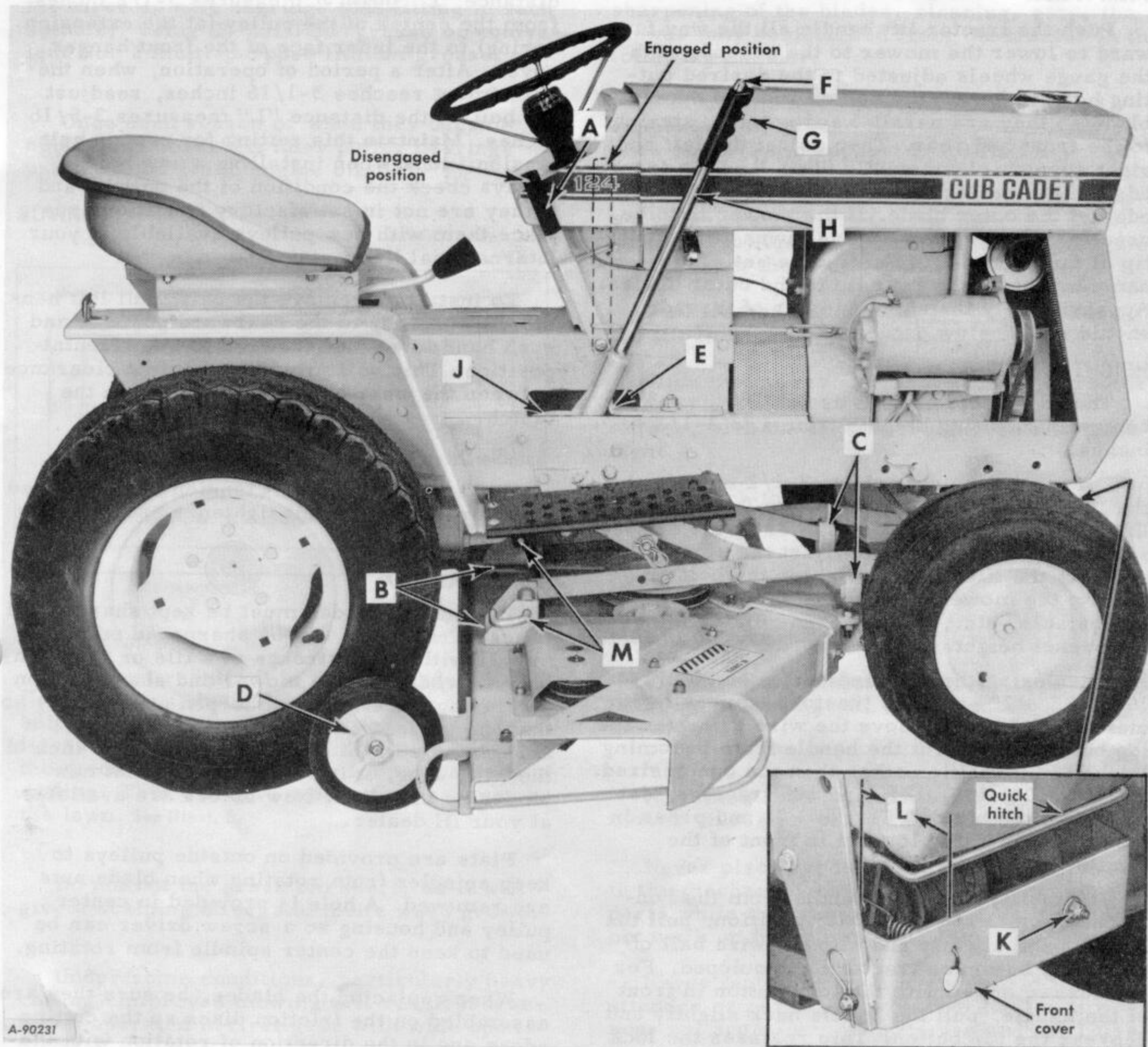
The lift linkage, with mounting brackets, can be quickly detached from Cub Cadet 72, 104, 105, 124, and 125 Tractors by removing two quick-attachable cotter pins and releasing the tractor quick hitch. On Cub Cadet 70, 71, 100, 102, 122, and 123 Tractors, the lift linkage is detached by removing three quick-attachable cotter pins.

Gauge wheels permit setting the cutting height to allow the mower to follow the contour of the ground and minimize ground scalping. The mower front roller also aids in minimizing scalping.

The tapered discharge chute terminates at a large, protected opening for efficient air and material flow across the front of the mower to minimize clogging.

Illustrations are numbered to correspond with the page number on which they are located. Therefore, if reference is made to **Illust. 6A** for example, you know the illustration appears on page 6. The letter "A" indicates that it is the second illustration on that particular page.

ADJUSTING AND OPERATING



Illust. 3
42-inch mower shown.

STARTING AND STOPPING THE MOWER

To start the mower, push hand lever "A" (Illust. 3) to the notch in the forward position. To stop the mower, pull the lever to the notch in the rearward position.

Check the tires for proper inflation before making a level and height adjustment.

LEVEL ADJUSTMENT

To adjust the mower for level, first place the tractor on a level surface, preferably a

hard surface area such as a garage floor or sidewalk.

Side to Side

Lower the mower almost to the ground making sure the gauge wheels do not touch the ground. Add 13/32 x 13/16 x .065-inch flat washers, as required, under the left and right mower support brackets "B" (Illust. 3) so the height from the top of the mower housing to the ground is equal on each side. Then tighten support brackets securely.

Continued on next page.

ADJUSTING AND OPERATING

LEVEL ADJUSTMENT - Continued

Front to Rear

Push the tractor lift handle all the way forward to lower the mower to the ground, with the gauge wheels adjusted to the desired cutting height. Rotate the center and one outer blade so they are parallel and pointing straight to the front and rear. Then adjust the left and right support clevises "C" (Illustr. 3) so the front edge of the center blade is level with the back edge of the outer blade. If the mower is to be used for close cutting of fine lawns, the front tip of the center blade should be set at the same height as the rear tip of the outer blades. Approximately the same number of threads should show below each nut.

HEIGHT OF CUT

The adjustable gauge wheels "D" (Illustr. 3) control the cutting heights from 1 to 2-1/2 inches.

For cutting heights above 2-1/2 inches, use the lift handle stop "E" (Illustr. 3). To set the lift handle stop, raise the mower to the desired cutting height; then adjust the stop so it contacts the lift handle. Tighten the bolt securely; the mower can now be raised to cross an obstacle, etc., and lowered, maintaining the preset height.

When using the lift handle stop on 70, 71, 100, 102, 122, and 123 tractors equipped with manual lift handle, move the wire bail over the top button to prevent the handle from becoming latched in a position other than the one desired. For 72, 104, 105, 124, and 125 tractors, depress the top button "F" (Illustr. 3) and press in the lock button "G" located in front of the handle "H".

To disengage the lift handle from the "unlatched" or "Free-to-Float" position, pull the handle back slightly and slip the wire bail off of the top button on tractors so equipped. For tractors equipped with the lock button in front of the handle, pull the handle back slightly and depress the top button. This releases the lock button.

For tractors equipped with the manual lift handle, the cutting height may also be controlled by securing the lift handle in a notch in the quadrant "J" (Illustr. 3).

On tractors having the hydraulic lift unit, raise the end clevis locking clip up, into the unlocked position.

V-BELT ADJUSTMENT

Main Drive Belt

The main drive V-belt is adjusted for tension by bolt "K" (Illustr. 3). Tighten the lock nut to increase belt tension and loosen the lock nut to decrease belt tension.

When installing a new belt, the initial tension is obtained by adjusting the bolt so the distance "L" (Illustr. 3) measures 3-1/2 inches from the center of the pulley (at the extension spring) to the inner face of the front hanger cover. After a period of operation, when the adjustment reaches 3-1/16 inches, readjust the bolt so the distance "L" measures 3-5/16 inches. Maintain this setting for proper belt tension. **Note:** When installing a new belt, always check the condition of the pulleys and if they are not in satisfactory condition, replace them with new pulleys available at your International Harvester dealer.

To install or remove the belt, pull left handle "H" (Illustr. 3) to the rearward position and push hand lever "A" forward to a horizontal position. This will provide sufficient clearance between the wear and thrust buttons on the clutch.

Spindle Drive Belt

The spindle drive belt tension is maintained by a spring-loaded belt tightener and requires no adjustment.

BLADE CARE

The cutting blades must be kept sharp at all times. The blades can be sharpened on the mower with a few strokes of a file or they can be removed from the mower and sharpened on a grinding wheel. **Note:** Sharpen ends evenly so that the blades remain balanced. However, if the cutting edge of a blade is within 3/8 inch of the wind wing, it is recommended that new blades be installed. New blades are available at your IH dealer.

Flats are provided on outside pulleys to keep spindles from rotating when blade nuts are removed. A hole is provided in center pulley and housing so a screw driver can be used to keep the center spindle from rotating.

When replacing the blades, be sure they are assembled on the friction discs so the cutting edges are in the direction of rotation with the wind wings pointed upward and the cap screws tightened securely.

Note: If the spindle nuts are removed for any reason, they should be retightened to 55 to 60 foot-pounds torque when replaced.

Caution! Never look into the discharge opening while the blades are in motion.

CLEANING

Clean the underside of the mower at the end of the mowing season and when the build-up of cut material on the underside is noticed.

Caution! Stop the tractor motor before attempting to clean or work on the mower.

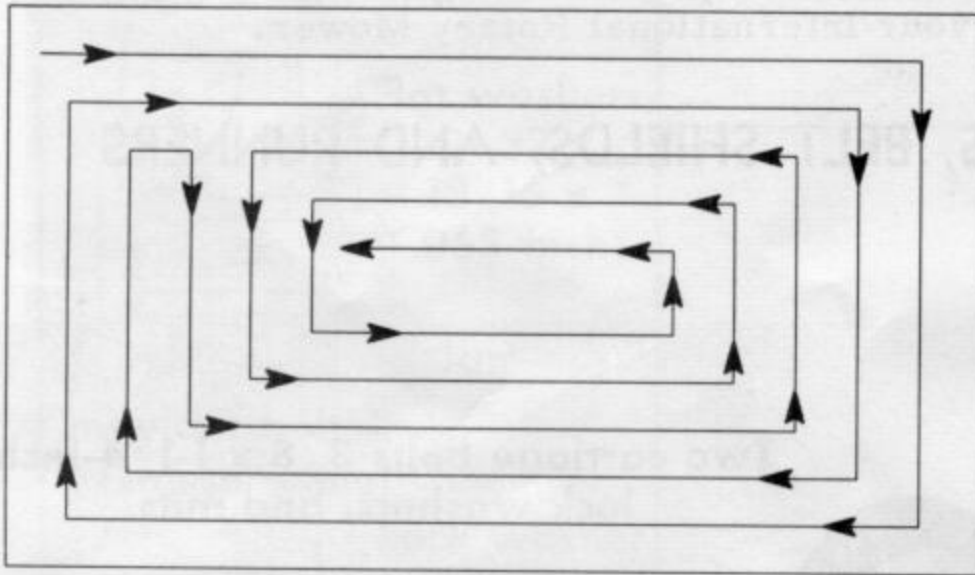
ADJUSTING AND OPERATING

LUBRICATION

After every 16 hours of operation, lubricate the three spindle bearings (one fitting in each spindle), using IH-251 HEP grease or equivalent No. 2 multi-purpose lithium grease.

Once each season or when they become noisy, oil the V-belt idler pulley bearings using a good grade engine oil.

MOWING



A-62943

Illust. 5

For best results it is recommended that the first two laps should be cut with the discharge being thrown towards the center. After the first two laps, reverse the direction to throw the discharge to the outside for the balance of cutting. This will give a better appearance to the lawn. See Illust. 5.

Do not cut the grass too short, as it will give a scalping effect and invite weed growth.

Under some conditions, particularly heavy cutting, improved mowing will result if tractor is operated in first gear with wide open throttle.

GENERAL

After 4 hours of running, check and adjust for V-belt tension. Refer to "V-BELT ADJUSTMENT" on page 4.

After 8 to 10 hours of operation check and retighten, if necessary, all nuts and bolts on the machine paying particular attention to the hex. nuts securing the blades to the spindles and the cap screws at the top of the spindle. These nuts and bolts should be tightened securely. Check and retighten, if necessary, all nuts and bolts at least once a year thereafter.

Attaching and Detaching the Mower

To facilitate the changing of the blades, sharpening of the blades, cleaning, etc., the mower may be detached from the tractor in the following manner:

Pull out the left and right spring loaded support pins "M" and turn them downward so ends butt against support brackets "B".

Move mower forward so left and right support clevises "C" are free of the front pivot links and lower mower to ground. Remove the V-belt from the center pulley.

Pull tractor lift handle "H" back to raise the lift linkage for clearance.

Slide the mower out from under the tractor on the right side. To aid in removing the mower, turn the tractor front wheels to the right.

To attach the mower to the tractor, reverse the above procedure.

SAFETY SUGGESTIONS

The discharge shield on the 48-inch mower must be attached at all times while operating the mower.

No minor should be allowed to operate the mower unless properly supervised.

Never place hands or feet under the mower, in the discharge chute, or near any moving parts while the tractor engine is running. Do not work on the mower with the engine running.

Never leave the tractor engine running unattended or permit it to be operated by persons not acquainted with its use and the rules for safe operation.

Be sure all stones, branches, or other objects that might be picked up and thrown by the mower blades are removed before starting to mow.

Do not allow anyone in the area opposite the discharge chute while mowing. Although the area has been supposedly cleared of foreign objects, small objects may have been overlooked and may be discharged by the mower.

Disengage the power take-off clutch before starting the tractor.

SETTING UP

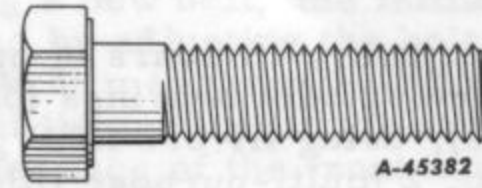
Remove all wires. Sort out all hardware by sizes and types in a convenient and orderly manner.

Bolts must be used in the holes in which they are found, or in the parts to which they are attached unless otherwise shown.

Lubricate all working parts as you proceed, and see that they work freely.

Whenever the terms "left" and "right" are used, it should be understood to mean from a position behind and facing the machine.

Type 2 bolts furnished with the machine are



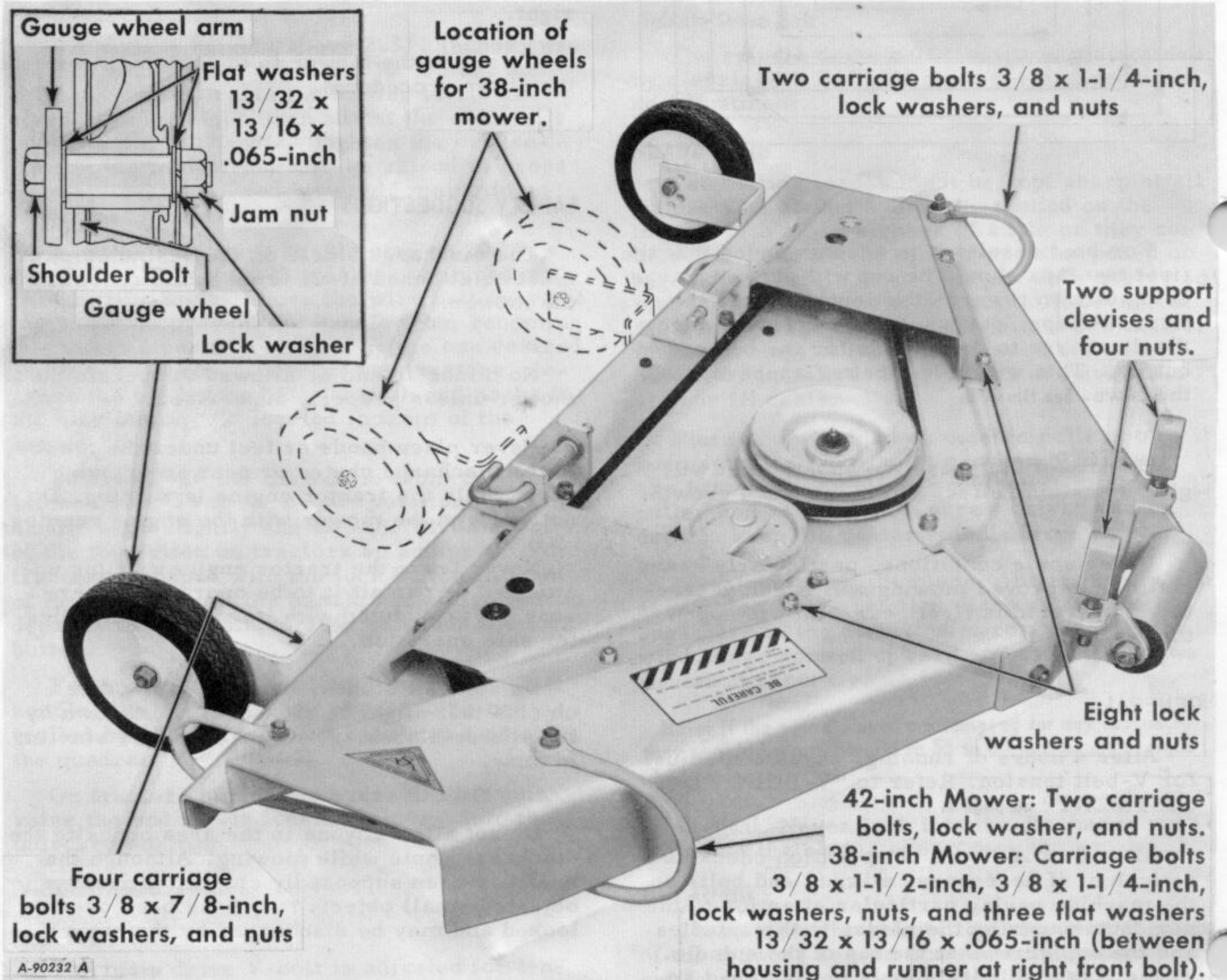
Illustr. 6

identified by three radial lines on the head. See Illustr. 6. Bolts without radial lines are type 1.

The illustrations on pages 6 to 11 inclusive show the sequence of steps to properly set up your International Rotary Mower.

STEP 1. GAUGE WHEELS AND BRACKETS, BELT SHIELDS, AND RUNNERS

38-AND 42-INCH MOWERS



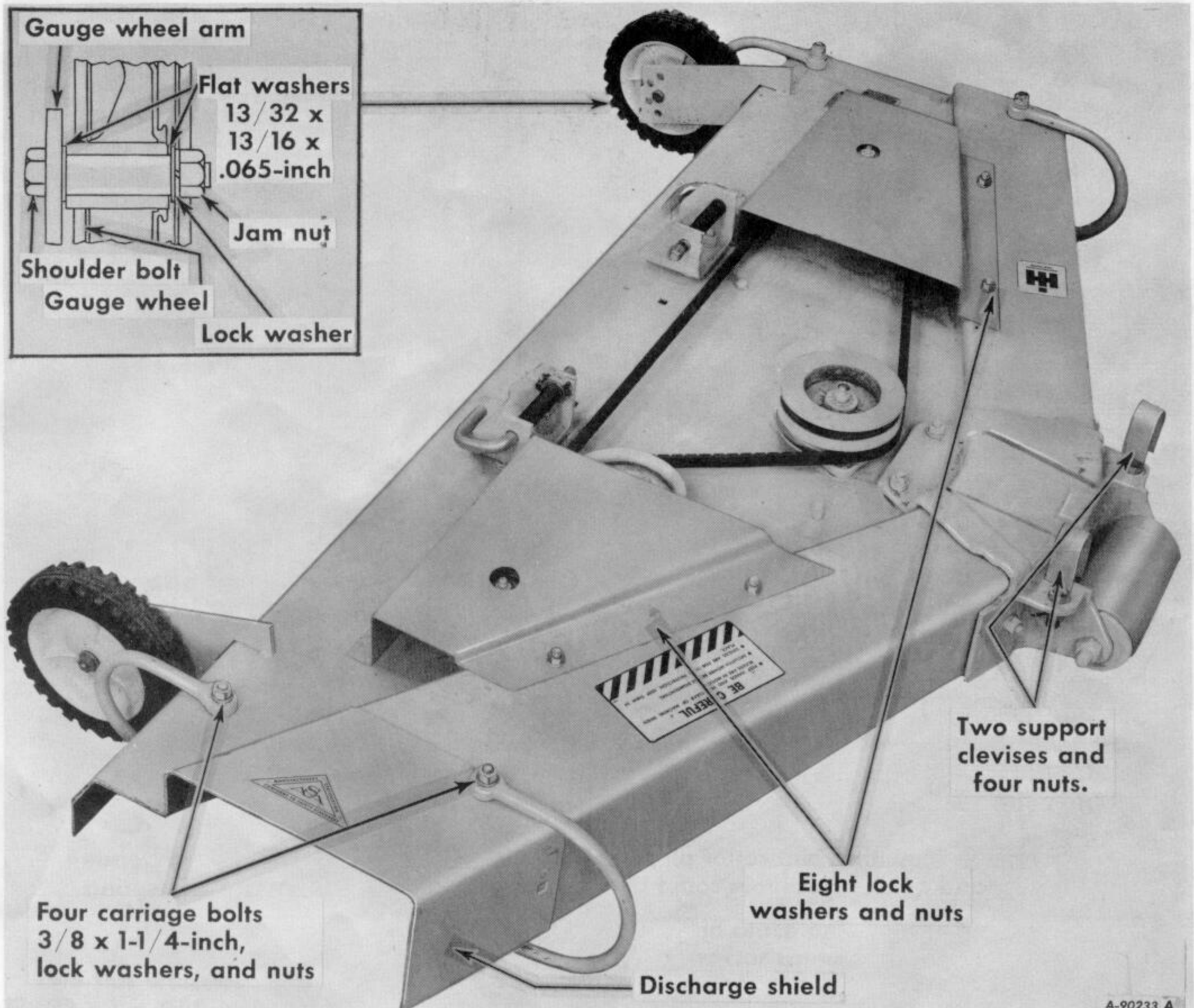
Illustr. 6A

SETTING UP

STEP 3. ATTACHING LIFT FRAME ASSEMBLY TO TRACTOR

STEP 1. GAUGE WHEELS AND BRACKETS, BELT SHIELDS, AND RUNNERS —Continued

48-INCH MOWERS



Illust. 7

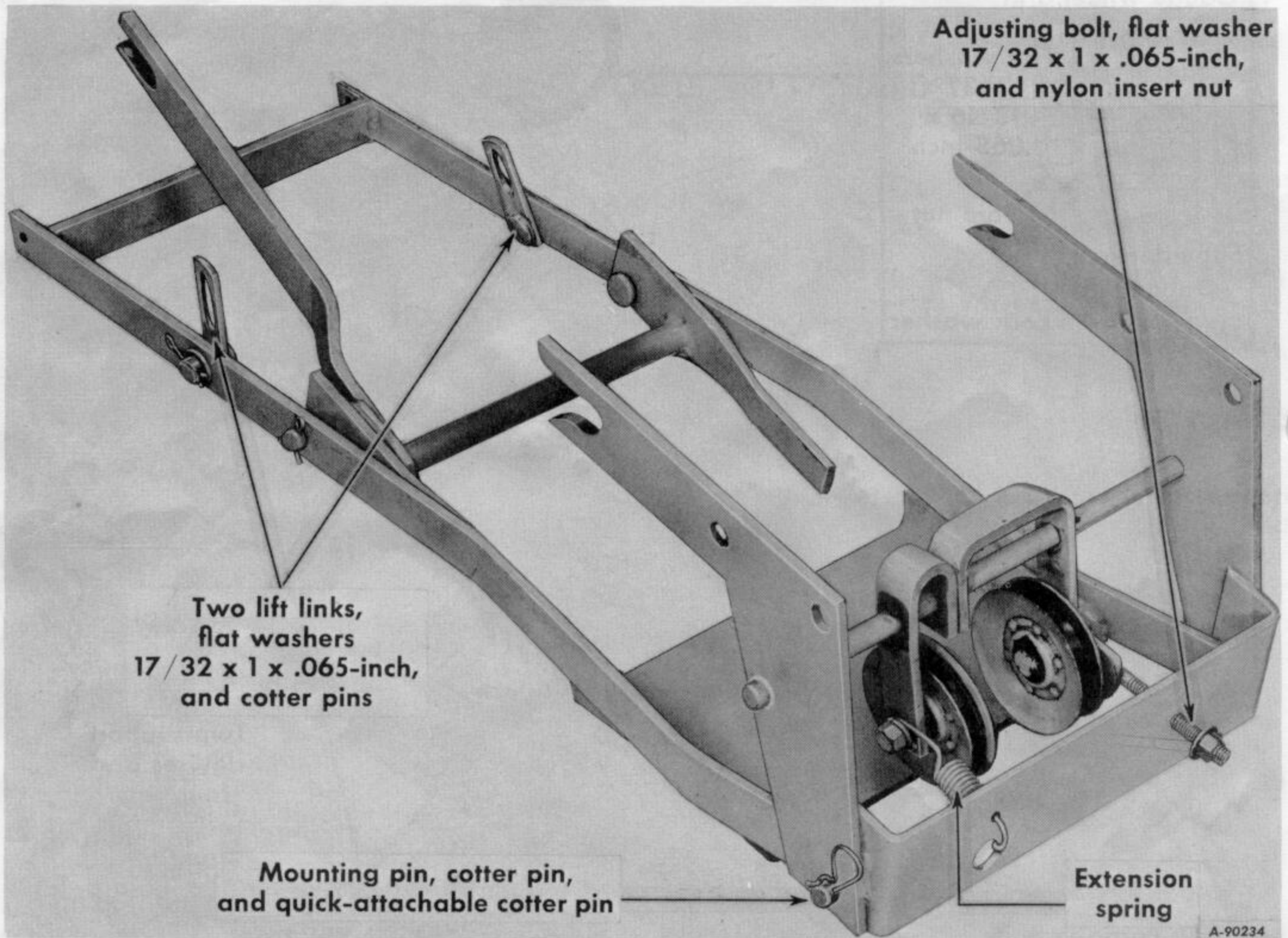
SETTING UP

Remove all wires. Sort out all hardware by size and type in a convenient and orderly manner.

Bolts must be used in the holes in which they are found, or in the parts to which they are attached.

Lubricate any parts as stated in the manual. Lubricate the rollers and the wheels of the machine.

STEP 2. LIFT FRAME AND FRONT HANGER ASSEMBLY

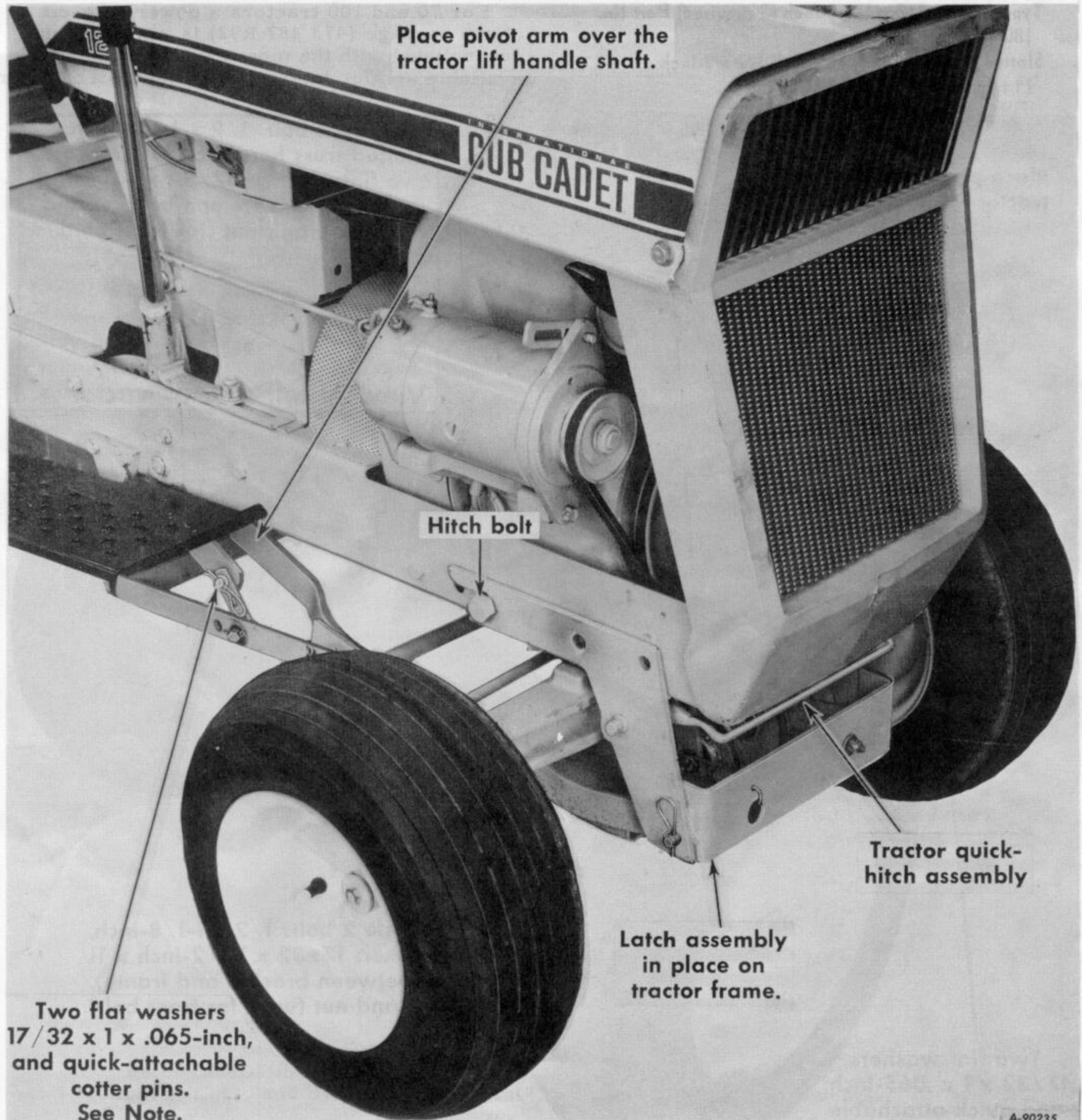


Illust. 8

SETTING UP

STEP 3. ATTACHING LIFT FRAME ASSEMBLY TO TRACTOR

INTERNATIONAL CUB CADET 72, 104, 105, 124, AND 125 TRACTORS



A-90235

Illust. 9

Note: Push the tractor lift handle all the way forward before connecting the lift links to the tractor lift arms.

SETTING UP

STEP 3. ATTACHING LIFT FRAME ASSEMBLY TO TRACTOR—Continued

INTERNATIONAL CUB CADET 70, 71, 100, 102, 122, AND 123 TRACTORS

For tractors not equipped with quick-hitch, the following parts are required and can be obtained at your International Harvester dealer.

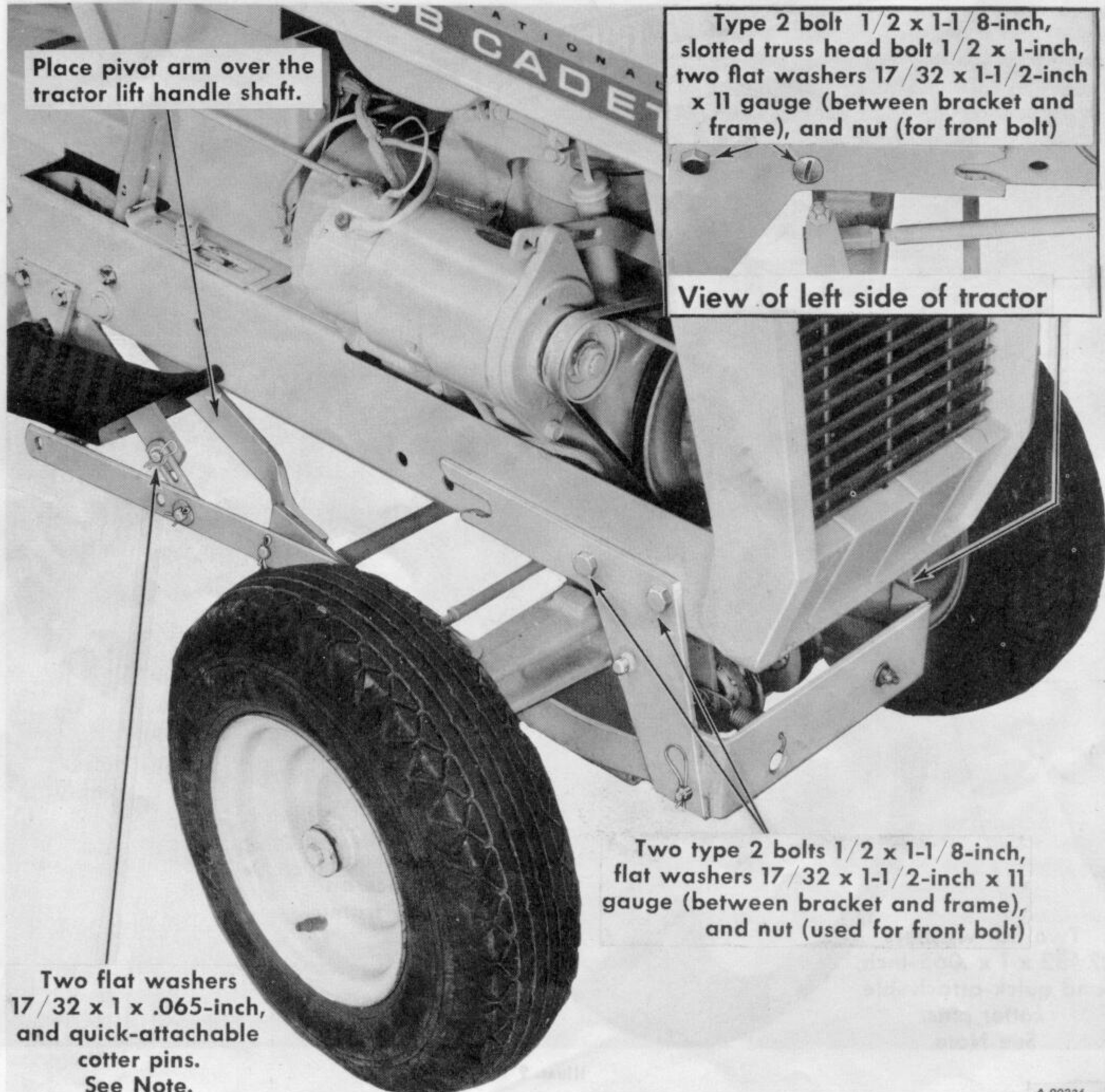
Type 2 bolts $1/2 \times 1-1/8$ -inch (3 required) Part No. 180 174.

Slotted truss head machine bolt $1/2 \times 1$ -inch (1 required) Part No. 20 249 R1.

Flat washers $17/32 \times 1-1/2$ -inch \times 11 ga. (4 required) Part No. 460 908 R1.

Nuts (2 required) Part No. 120 378.

For 70 and 100 tractors a power take-off clutch package (473 487 R92) is required but not included with the mower. This package is available at your International Harvester dealer.

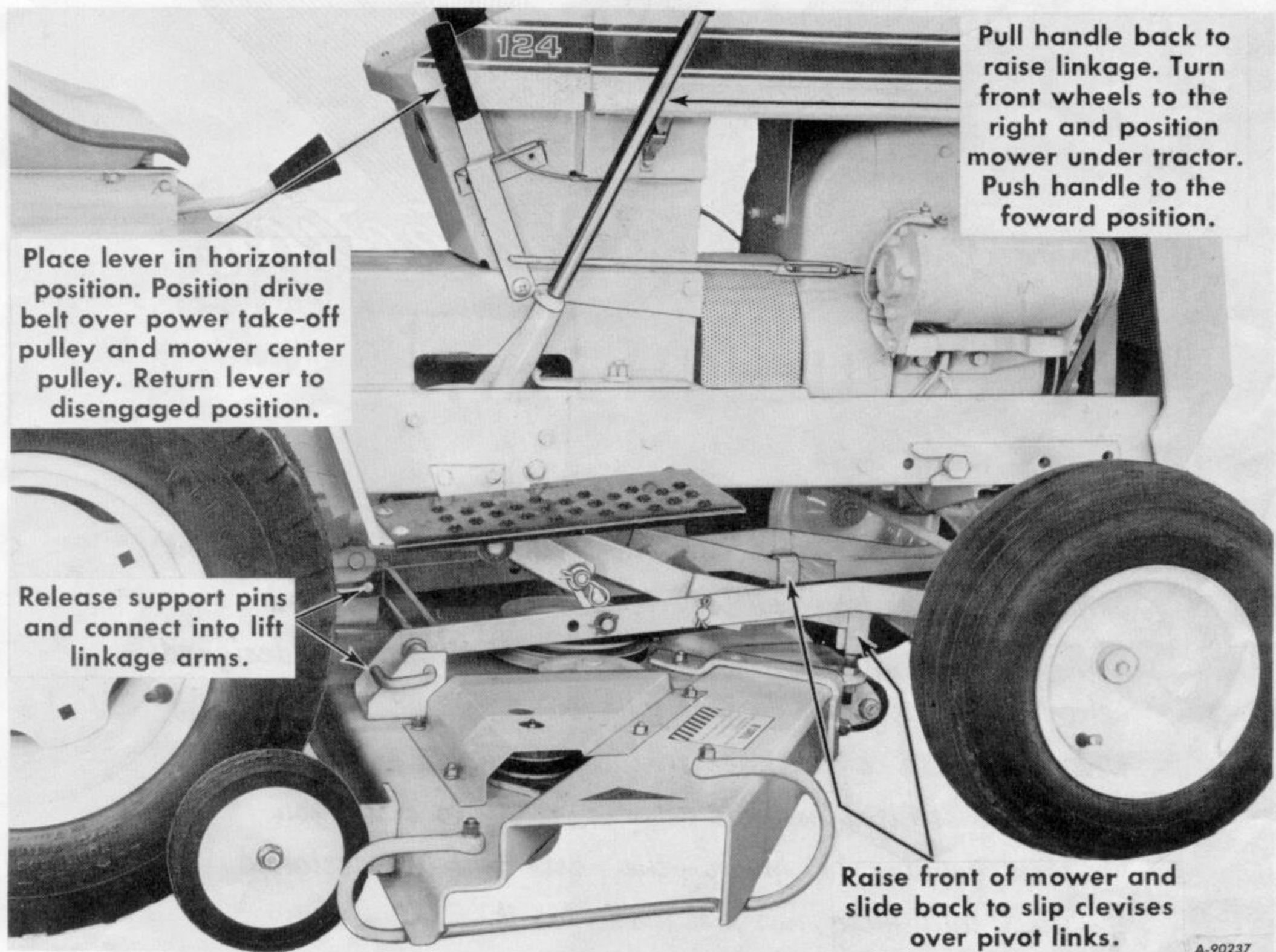


Illust. 10

Note: Push the tractor lift handle all the way forward before connecting the lift links to the tractor lift arms.

SETTING UP

STEP 4. ATTACHING MOWER TO LIFT FRAME ASSEMBLY ON TRACTOR



Illust. 11

View of 42-inch mower. 38- and 42-inch mowers attached identically.

Refer to ADJUSTING AND OPERATING under "Level Adjustment", "Height of Cut", and "V-Belt Adjustment" for the necessary adjustments.



For Your Protection

Use IH Parts

TO THE OWNER—

You have just purchased one of the finest pieces of equipment available today. You can look forward to years of good service because International Harvester machines are designed better and built better to last longer.

When you need to purchase replacement parts or have your equipment serviced, we will be here, ready to serve you.

We stock genuine IH parts—the parts that are designed for your equipment, not just made for it.

We also offer you IH Blue Ribbon Service—the service that puts your equipment back to work in minimum time at an economical cost. We are here to serve you—call on us in the future.

Sincerely,

Your IH dealer

INTERNATIONAL HARVESTER COMPANY • 401 NORTH MICHIGAN AVENUE • CHICAGO, ILLINOIS 60611, U.S.A.

1 083 153 R2. 3-1-68-20-1/2B.

PRINTED IN UNITED STATES OF AMERICA