

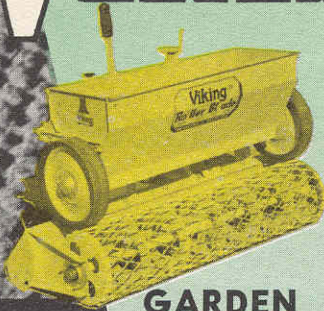
Viking

LAWN BUILDING and TURF CARE WITH NO HAND WORK

Landscaping

Roller Blade

The one tool that does ALL lawn and turf Building and Rebuilding Operations



FOR HOME OWNERS

GARDEN MODEL 33
Fits 7hp GARDEN TRACTOR
36"

LAWN BUILDING

- Grading
- Leveling
- Seeding
- Fertilizing
- Rolling
- Clod Breaking
- Scarifying

For Home Owners
and small CONTRACTORS



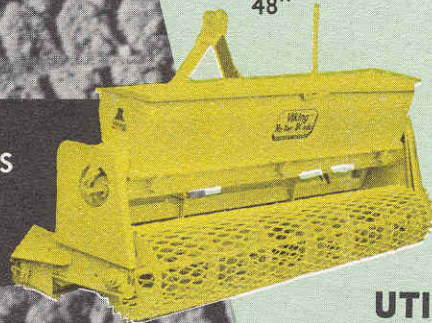
CUB MODEL 44

Fits Cub-Low Boy Tractors
48"

LAWN MAINTENANCE

- Slicing
- Aerating
- Over Seeding
- Fertilizing

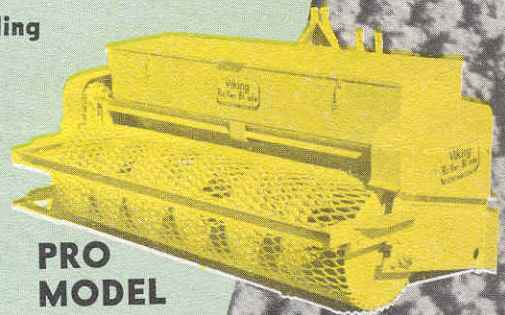
FOR CONTRACTORS
Builders
Nurserymen



UTILITY MODEL 55

Fits all 3-point hitch old and new

72" LIGHTWEIGHT



PRO MODEL 66

72' Heavy

FOR CONTRACTORS
Golf courses—Municipalities
Schools—Industry



VIKING MANUFACTURING CO.

Manhattan, Kansas

PRescott 8-3578

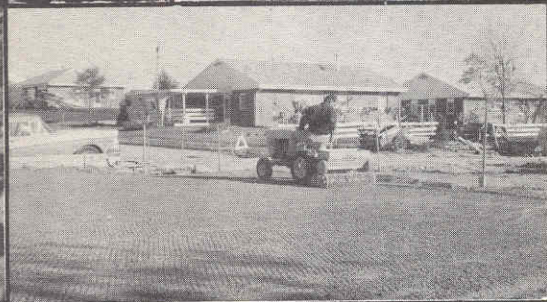
Quality Machinery Since 1931



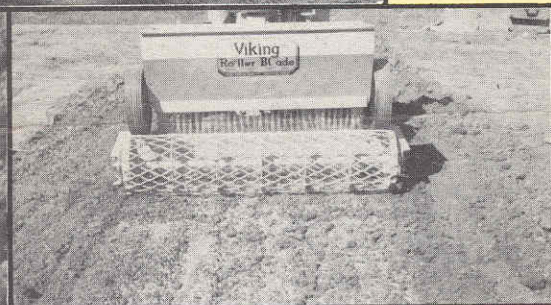
With scarifier attachment you can rip up hard packed ground. Additional down pressure caused by scarifying teeth help Grid Roller pulverize clods.



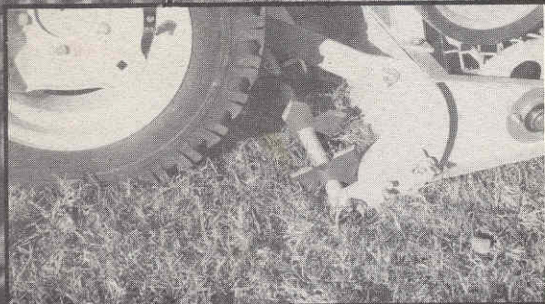
With blade floating between Grid Roller and tractor wheels, it can be raised or lowered by the pitch control for a perfect levelling job.



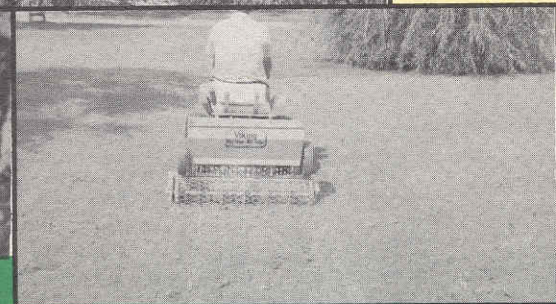
The grid pattern of the roller has an excellent pulverizing effect on clods. Dirt which is pulverized to the inside of the roller filters out the rear as you drive forward. The grid pattern also leaves an excellent quilt pattern on the completed seed bed with thousands of small conservation pockets to hold water.



When grade is established, fertilizer and/or seed can be spread with precision.



With slicing attachment in operating position, weight of machine will cause blades to slice through grass mat and thatch so that the soil will be aerated and openings will be provided for seed and/or fertilizer. Also, the root system and runners will be sliced.



With slicing attachment in operating position spread fertilizer and seed. The grid roller will work seed into freshly sliced sod and will compact it around seed.



VIKING MANUFACTURING CO.

LAKES SUPPLY CO.
5 MILES EAST OF DUNDEE ILL. ON HWY 72
P. O. DUNDEE ILLINOIS
PHONE HAZEL 6-2211 OR 6-3113

MANHATTAN, KANSAS

PRescott 8-3578

Quality Machinery Since 1931